

Figure 1. Mean estimates of nest density (and 95% CrI) by treatment for Dickcissels at the Mississippi State University Research Unit in Monroe Co., MS, USA, 2011–2012.

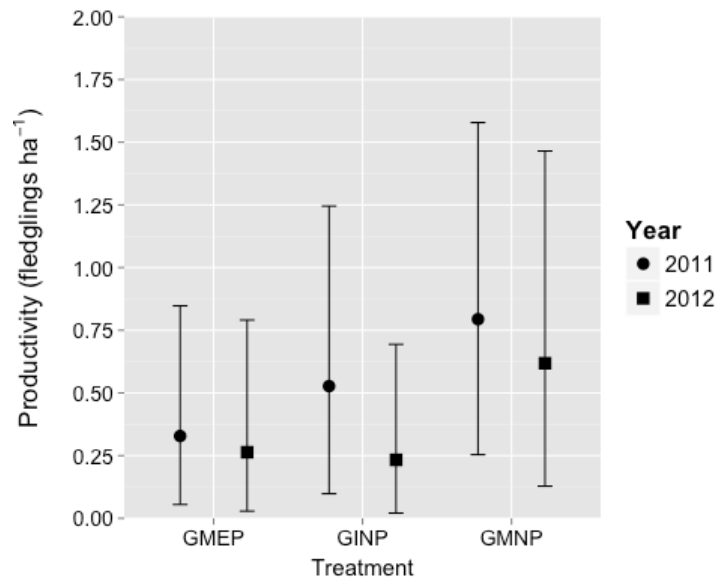


Figure 2. Mean estimates of productivity (and 95% CrI) by treatment for Dickcissels at the Mississippi State University Research Unit in Monroe Co., MS, USA, 2011–2012.

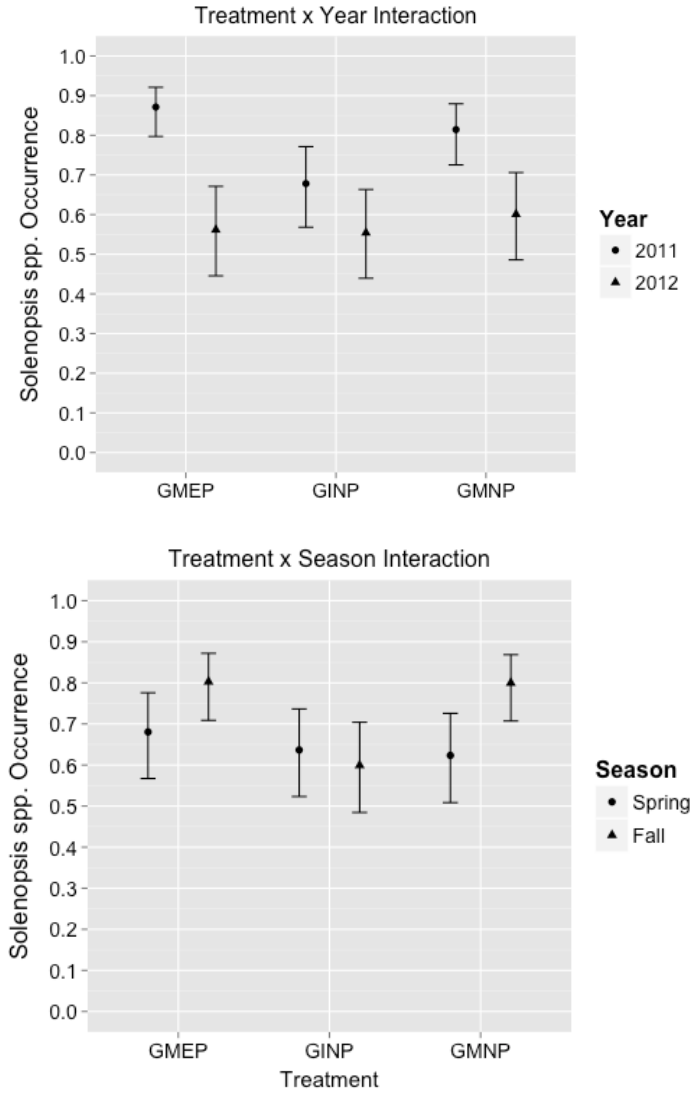


Figure 3. Interaction plots for mean IFA occurrence (\pm SE) by treatment^a measured from 36 vials per pasture at the Mississippi State University Prairie Research Unit in Prairie, MS, USA, 2011–2012.

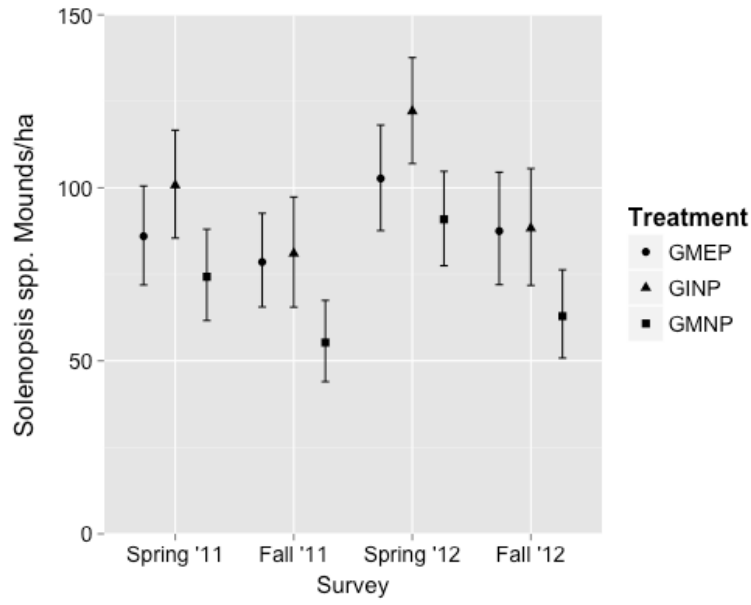


Figure 4. Mean IFA mound density (and 95% CrI) by treatment^a estimated from pastures at the Mississippi State University Prairie Research Unit in Prairie, MS, USA, 2011–2012.

^aTreatments included grazed mixed exotic pasture (GMEP), grazed Indian grass native pasture (GINP), and grazed mixed native pasture (GMNP).

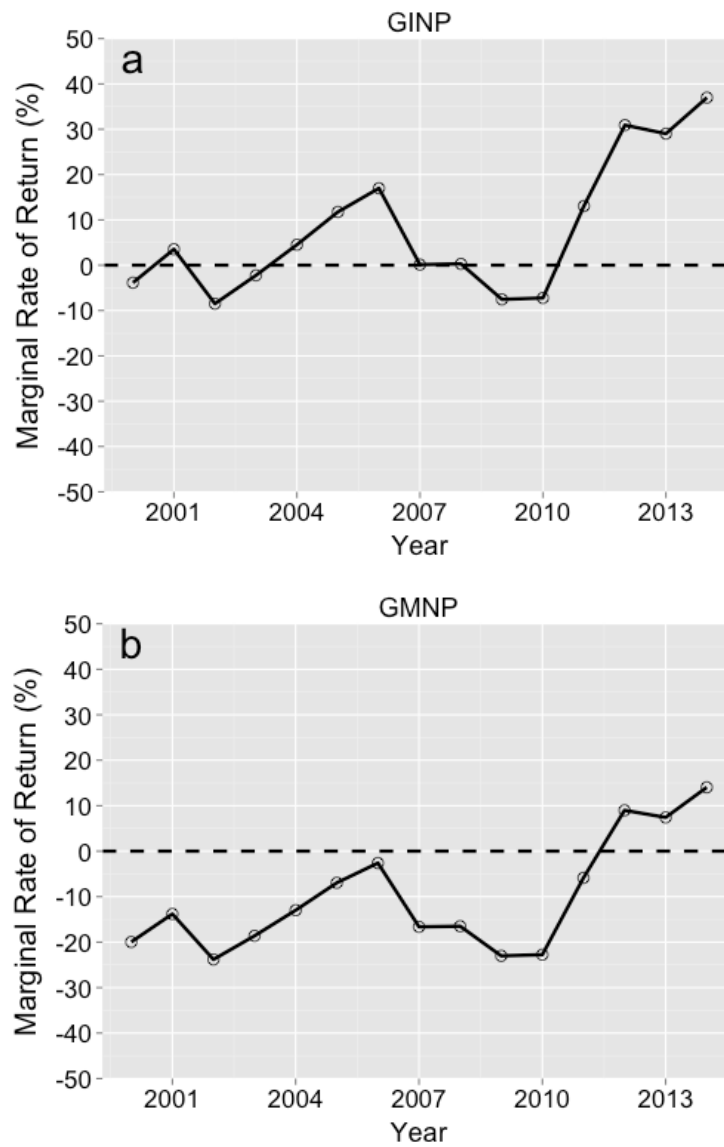


Figure 5. Marginal rate of return for converting GMEP to GINP (a) and GMNP (b), given 2011 partial budget values, price paid in May (1999–2013), and price received in January (2000–2014) for steers reported by NASS (a).