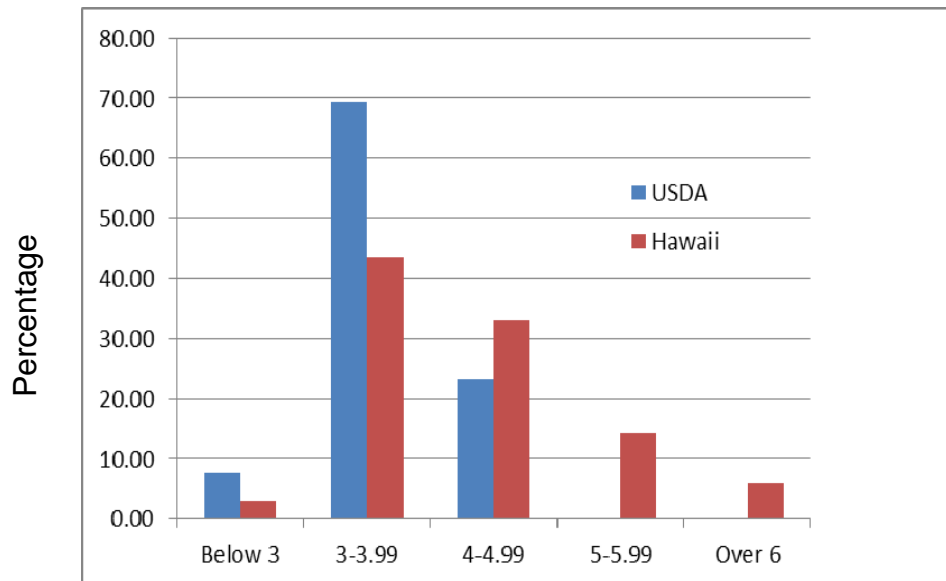


Warner-Bratzer Shear Force (WBSF) value distribution

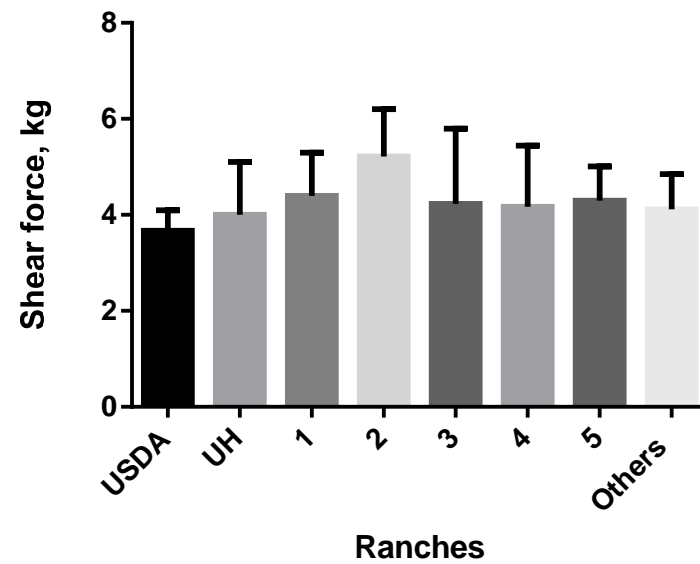
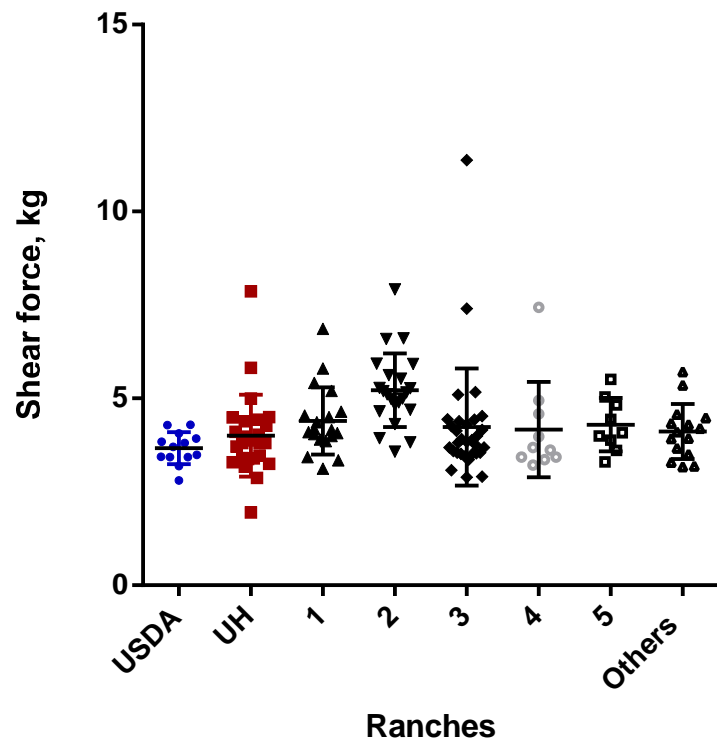
- 133 Ribeyes steak samples (aging variable between 2 to 3 weeks) plus 13 USDA certified tender ribeye steaks
- 6 major ranches
- Animals slaughtered between 8/2013 to 6/2014
- Samples were cooked in a water bath for 1 hour at 70°C, and cooled to room temperature, and six 1.27 cm core samples were prepared, and WBSF values were measured.



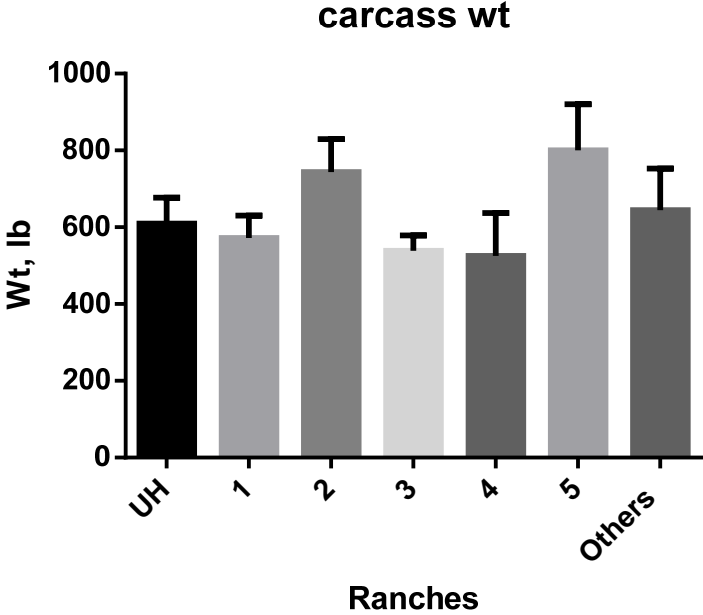
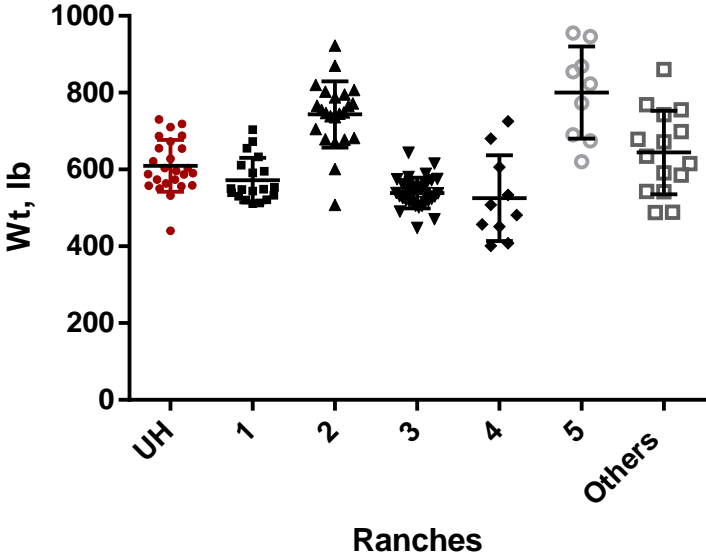
For “tender” claim
4.4 kg for WBSF
20 kg for SSF

For “very tender” claim
3.9 kg for WBSF
15.3 kg for SSF

WBS force distribution by ranches



Carcass wt distribution by ranches



WBS Force and Carcass Wt by Ranches

	WBS force, kg				Carcass Wt, lb			
	Average	SD	CV	Range	Average	SD	CV	Range
USDA (13)	3.67	0.43	11.7%	2.81 - 4.29				
Mealani (25)	3.96	1.10	27.8%	1.95 - 7.86	609.6	67.6	11.1%	440.5 - 710.5
Ranch 1 (19)	4.39	0.90	20.5%	3.12 - 6.86	572.3	57.8	10.1%	512 - 704
Ranch 2 (23)	5.20	0.97	18.8%	3.57 - 7.91	743.6	86.1	11.6%	508 - 923
Ranch 3 (31)	4.23	1.56	36.9%	2.90 - 11.37	538.9	40.2	7.5%	448 - 644
Ranch 4 (10)	4.17	1.28	30.7%	3.21 - 7.43	521.1	111.7	21.4%	401 - 725.5
Ranch 5 (9)	4.29	0.71	16.6%	3.29 - 5.51	800.5	119.7	15.0%	620 - 955
Others (15)	4.12	0.74	18.0%	3.16 - 5.71	644.2	108.7	16.9%	488 - 860