

2014 ANNUAL SARE REPORT

Visuals



Fig 1. Sunflower seeds are sprouting! Planted 5/18



Fig 2. Leaves of leafy greens grown in clover successfully matured.



Fig 3. Leaves of leafy greens grown clover barren spaces did not successfully mature

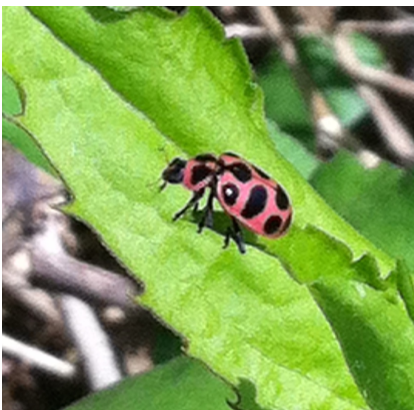


Fig 4. Ladybug Sighting!



Fig 5. Aphids preferring weeds



Fig 6. A symbiotic partnership:
Praying Mantis & Sunflower.

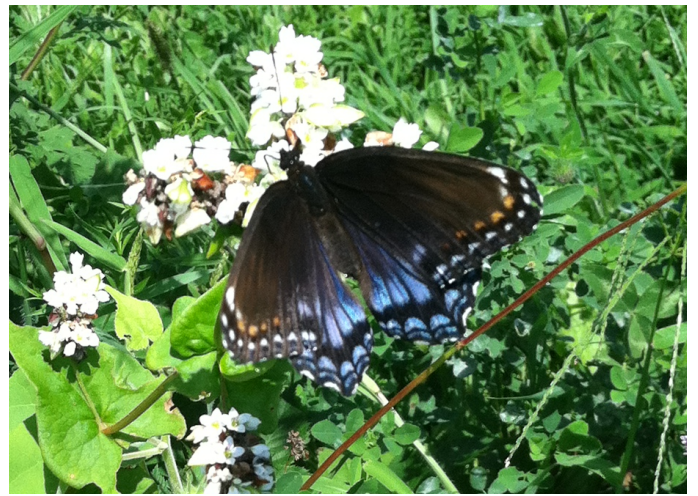


Fig 7. A majestic swallowtail lapping up
buckwheat nectar.



Fig 8. A safe haven for a robin's nest



Fig 9. The wrath of flea beetles on cool season
vegetables



Fig 10. A hearty bounty!