

This program was brought to you by:

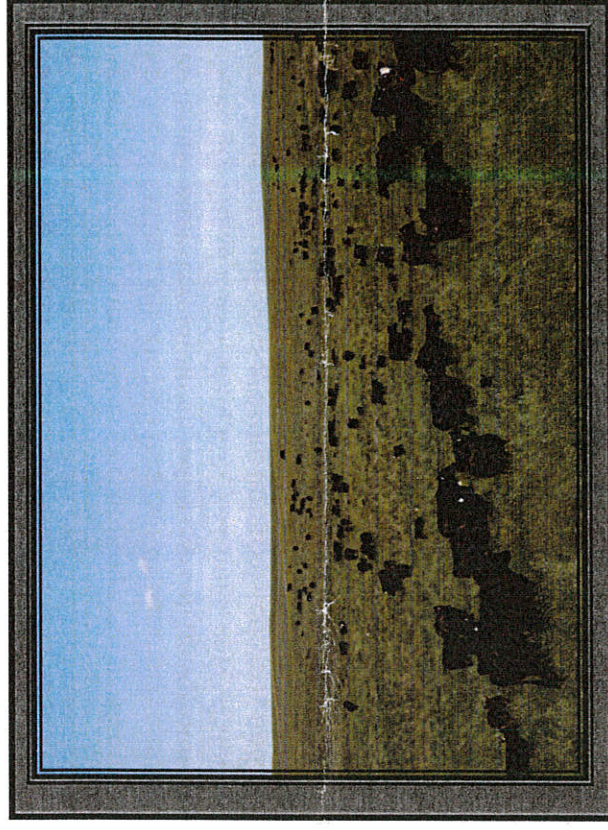
Little Beaver Conservation District

Natural Resources Conservation Service

A special thanks goes out to the following Local Businesses for sponsoring our Door Prizes:

Bank Of Baker

Soil Health Workshop



Thee Garage
Baker, MT
February 3, 2015

SOIL HEALTH WORKSHOP 2015

- 8:30-9:00 AM Registration
- 9:00-9:15 AM Welcome and Introductions
- 9:15-10:15 AM **“Integrated Alternative Beef Production”, Doug Landblom**
- Mr. Doug Landblom is the Dickinson Research Extension Center, Beef Cattle Specialist, with 40 years of experience conducting nutrition, reproduction, disease, and systems management research. Currently he is studying beef production methods when integrated into a diverse cropping system that includes a cover crop year. He will be presenting information on lower-input heifer development, extensive calf backgrounding, extended grazing of finish/slaughter yearlings, cow winter grazing, finishing cull cows grazing unharvested corn, and the results of new soil fertility research. Low commodity price for corn make it an attractive crop for beef production. Mr. Landblom will be discussing ways to use the crop for revenue generation in an integrated crop/livestock system.
- 10:15-10:45 AM **“Apps For AG”, Ann Fischer**
- 10:45-11:00 AM Break
- 11:00-12:00 PM **“Soil Health Concepts on Grazing Lands”, Kalyn Bohle**
- 12:00-12:45 PM Lunch
- 12:45-1:15 PM **“AGRI Insurance”, Dirk O’Connor**
- 1:15-2:15 PM **“Producer Profile”, Brett Nedens– Hardin, Montana**
- Brett farms both dryland and irrigated cropland outside of Hardin, MT. Over the years, the Nedens family has adopted various Soil-Health and Conservation practices, such as diversifying their cropping rotations (experimenting with Sunflowers, Safflower, Legumes, etc.), utilizing Precision Agriculture techniques, using a Stripper-Header on their dryland crop, experimenting with cover crops, seeding No-Till Sugar Beets, etc.
- 2:15-2:30 PM Break
- 2:30-3:30 **“Alternative Feeds for Supplementation”, Doug Landblom**
- 3:30-4:30 PM **“Why Use Cover Crops?”**, Little Beaver Conservation District Supervisors Panel

