

Fig. 1 Leaf Scar infection - Percent re-isolated from buds

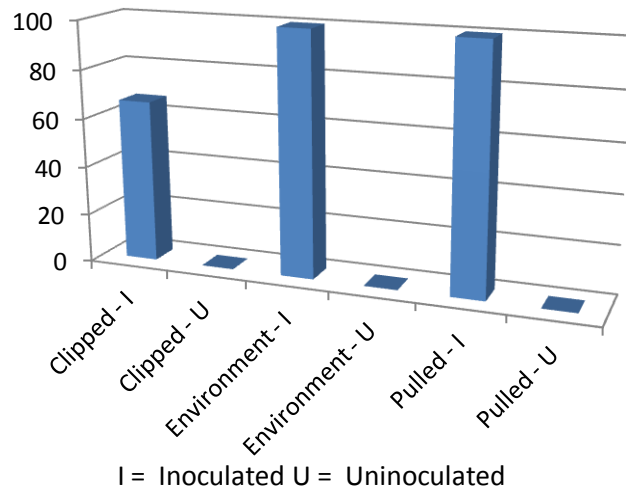


Fig. 2 Tissue stage and infection - percent re-isolation

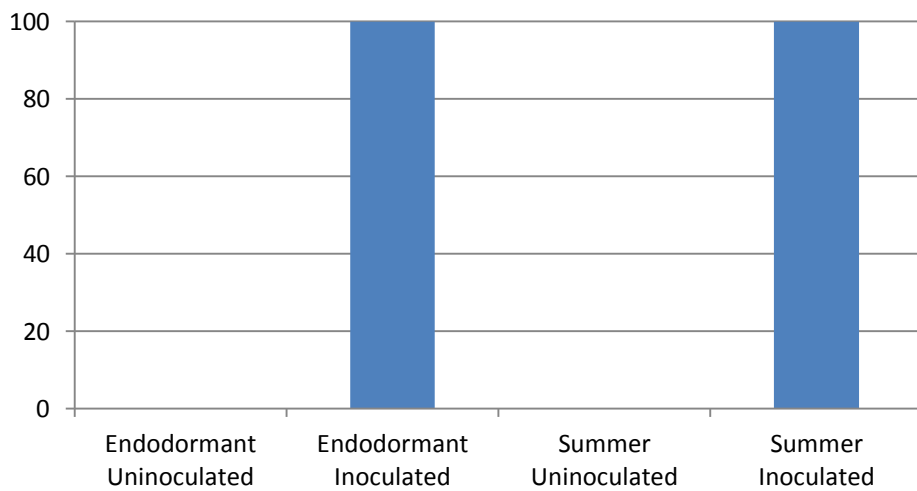


Fig. 3 Temperature and infection - Percent re-isolation

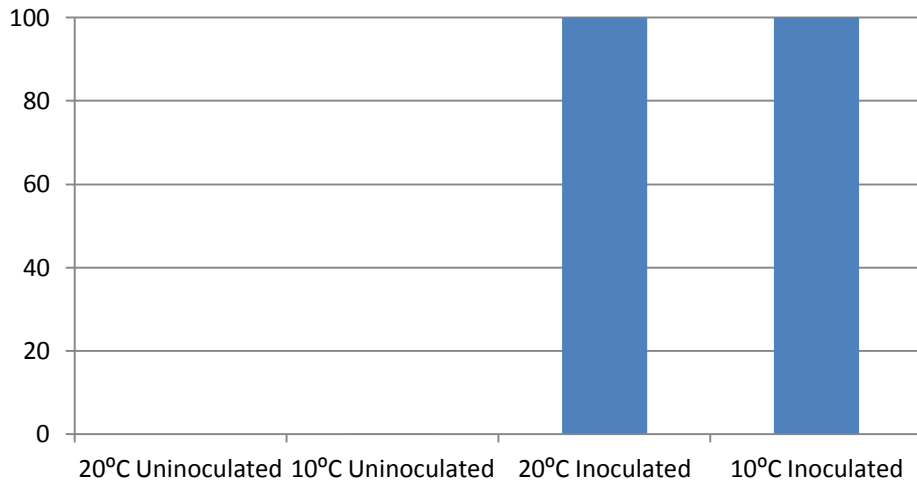
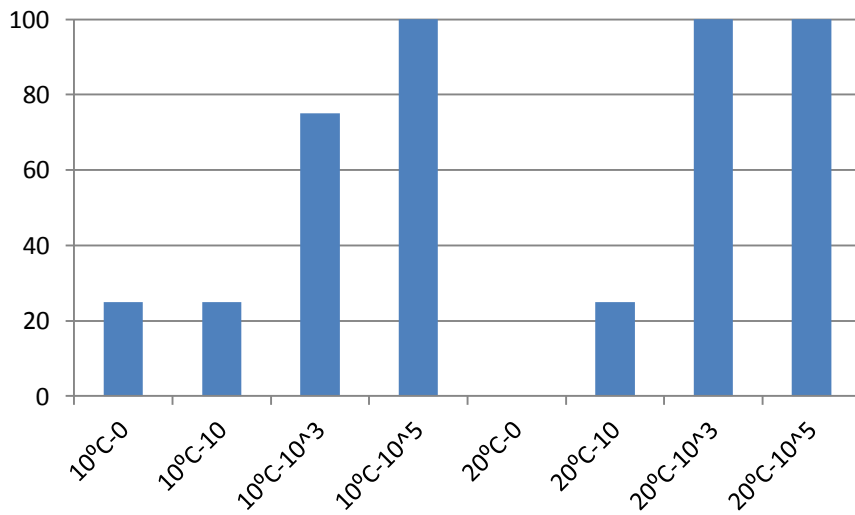
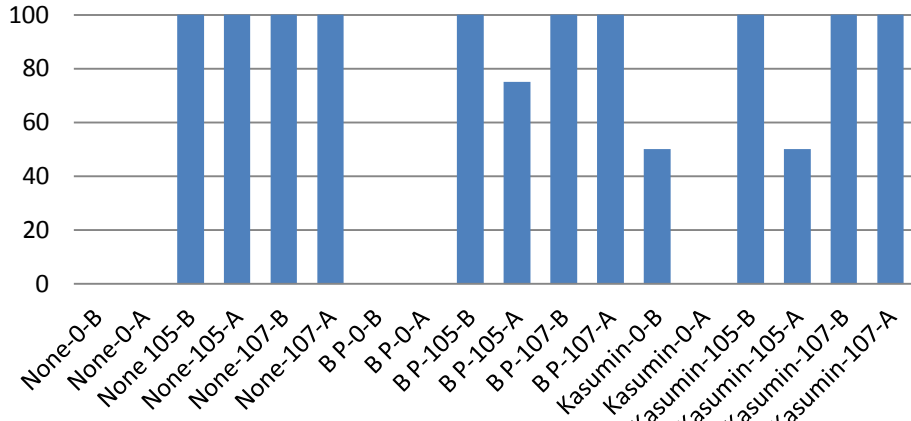


Fig. 4 Temperature and inoculum load - Percent re-isolation



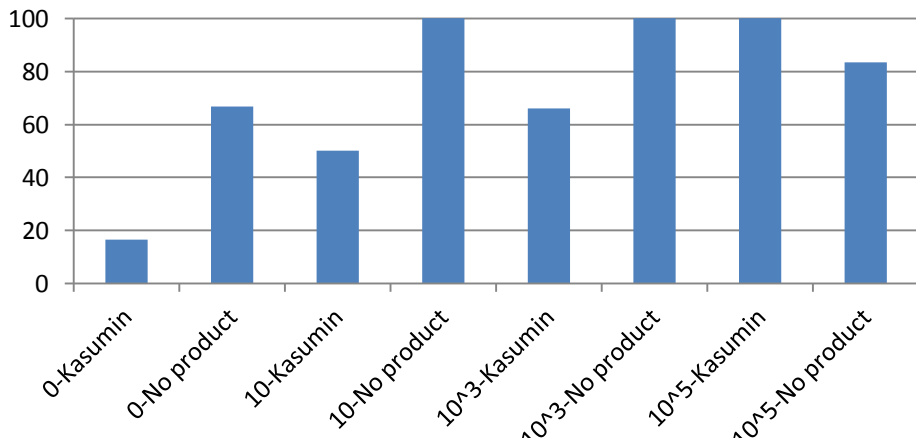
Inoculum loads are 0, 10³, and 10⁵ cfu/mL

Fig. 5 Product Testing - Percent re-isolation



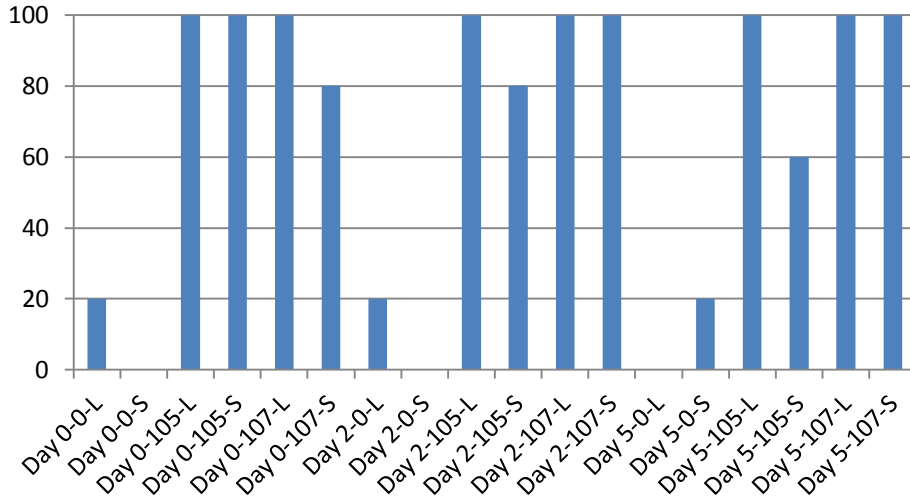
Kasumin, Blossom Protect (BP), and No treatment (None) were sprayed before (B) and before and after (A) inoculation. Inoculum loads were 0 (0), 10⁵ (105), and 10⁷ (107) cfu/mL

Fig. 6 Kasumin and inoculum load - Percent re-isolation



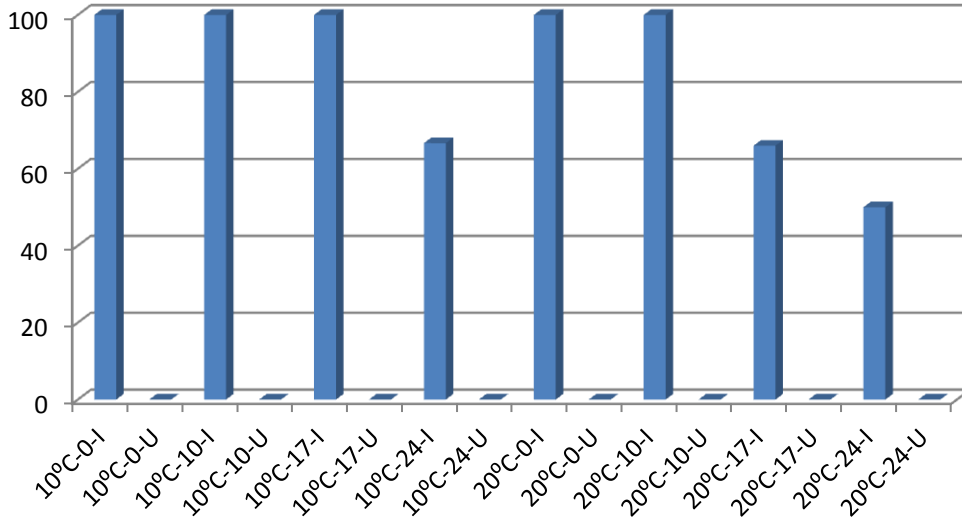
Inoculum load was 0, 10, 10³ or 10⁵ cfu/mL

Fig. 7 Time to inoculation and inoculum load - Percent re-isolation



Days were 0, 2 or 5 days after inoculation. Inoculum loads were 0 (0), 10⁵ (105), or 10⁷ (107) cfu/mL. Wound TCSA was either Large (L) or Small (S).

Fig. 8 Temperature and days to inoculation - Percent re-isolation



Temperature was 10°C or 20°C, Days were 0, 10, 17 or 24 days before inoculation, and I=Inoculated U=Uninoculated