

# **Feeding the people, Community Garden Projects**

By Raine Lampert  
Lac Courte Oreilles  
Ojibwa Community  
College Intern

---

# What tribes will be served?

**Lac du Flambeau**

**St. Croix**

**Red Cliff**

**Bad River**

**Lac Courte Oreilles**



# What are our goals?

---

Teach gardening to all generations.

Build relationships between the tribes.

Provide people with healthy food.

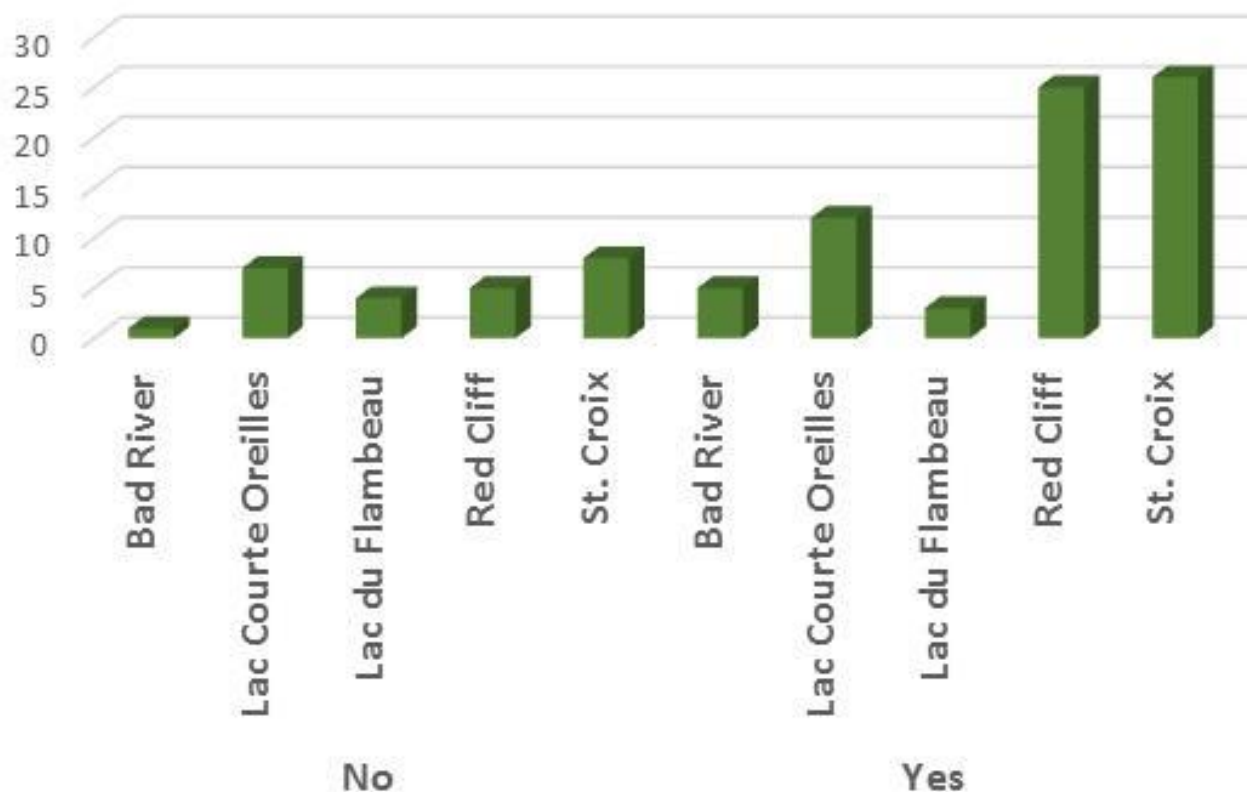
Work towards less dependency on U. S.

Government support programs.

Network to share the foods amongst the tribes.

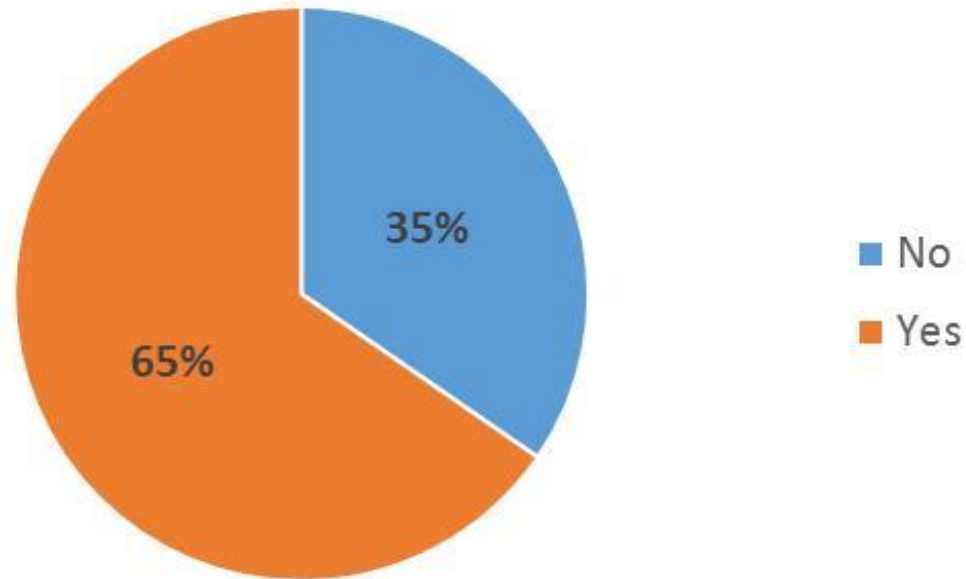
Work towards food sovereignty.

# What tribes are gardening?



# Teaching new gardeners, being able to help seasoned gardeners with needs.

Percentage of Respondents Who Garden



# Planning a garden

30 feet by 30 feet

Companion gardening

Plants as well as seeds to plant

Three sister gardening

Planting of tobacco, sage, corn, beans, cool old squash, sweet grass

Gardens monitored, data collected

# Starting Plants





# Plant Delivery- 125 per site



Greenhouse plants

Tobacco

Sage

Potatoes

Onions

Sweet Grass

Seeds- corn, peas, beans

Marigolds,



# Red Cliff Tribe



# Red Cliff

- There are established gardens at this reservation.
- They are growing food that is always distributed to the tribal people free of charge.
- The farm gives food to the Elder food programs. The Elders really appreciate it!
- There are children programs, they grow their own u-pick corn and pumpkins.

# Red Cliff Tribe



# Red Cliff

- The soil is very heavy, needs amending to really produce an abundance of food.
- The produce are labeled with signs that are written in Ojibewemowin and have a picture of the product as we well.
- The seeds are saved at this garden, they have the ability to start their own plants.
- The tribe has an established orchard. We use the produce in our canning class.



# St. Croix Tribe



# St. Croix

- Have an establish Three Sister Garden.
- The produce are labeled with signs that are written in Ojibewemowin and have a picture of the product as we well.
- They also have wonderful trellis, fencing made out of natural items.



# St. Croix Tribe





# St. Croix

- They have an Ojibwe herb/plant garden on the side of their building. They continue to add plants to the garden when they can.
- The test garden is located down by the main road. That way it has ample sun. Deer and other animals have been a problem.

# Lac du Flambeau



# Lac du Flambeau

- The tribe has an established a you-pick strawberry field. They also pick strawberries and sell out right to tourist and tribal people.
- Blueberries are also picked and sold there on site.
- We partner with the tribe to be able to use their produce in our classes at the College.

# Lac du Flambeau



# Lac du Flambeau

- This reservation has two fields right across from each other. The blueberry field is where the test garden was put in. The soil is heavy, needs to be amended.
- Water was at the site so the use of garden hoses was available.
- Main concern were chemicals that are used on the strawberries as well as the blueberries.



# Bad River Tribe



# Bad River Tribe

- The original plan was to put the test garden in at the old community garden that is by the powwow grounds. Due to it not being planted for many years, lack of man power the garden was incorporated into a Hugelkultur bed that was being created.
- The plants that were planted in the garden grew enormous due to the cow manure added to the soil.



# Bad River Tribe



# Bad River Tribe

- The garden was fenced in due to deer and other animals.
- The plan for the tribe is to create more of these types of gardens as they have poor quality soil in this area.
- The beds are dug deep, laid with old, dry wood that will decompose and build up the soil. The manure is added on top of the logs.

# Lac Courte Oreilles Tribe



# Lac Courte Oreilles Tribe

- The soil at these gardens were the best overall. They still need to be amended for maximum output of food.
- The three sister garden did very well as far as growing. The beans going up the corn were amazing to see.
- Due to the late planting there was not product to distribute though.



# Lac Courte Oreilles Tribe



# Lac Courte Oreilles

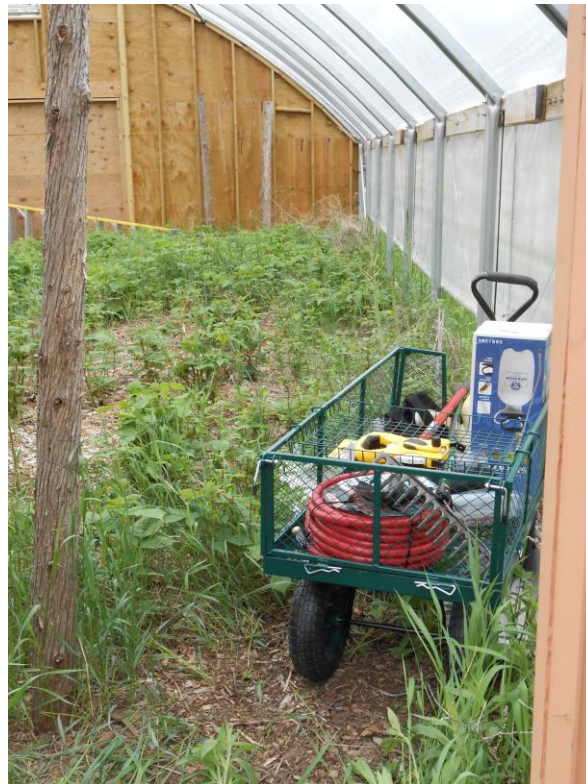
- First the gardens were measured out 30 X 30, then orange flags at 10 x 10, so there were 3 rows of 3 plots measuring 10 x 10.
- Then the plots were planted according to the garden plan.

# Lac Courte Oreilles Tribe





# Garden Tools



# Tools

- Shovels
- Rakes
- Watering cans
- Wheel barrow/ garden cart
- Seeds/ plants
- Hoses
- Flags,gloves

# Rain barrels, Wash station



# Rain barrels, Wash stations

- Rain barrels were created at Lac Courte Oreilles Ojibwa Community College Research Farm by Interns. Barrels were obtained at businesses that no longer needed them, they are food grade plastic.
- The wash stations were also made by interns at the farm.
- Recycling water is one of our goals with the gardens.



# Red Cliff Garden



# Red Cliff Garden

- The picture on the left shows when the plants were first put into the ground.
- The picture on the right shows the plants after being established. They never got really big and bushy. They stayed small, stunted from lack of organic material, from thick heavy clay. The plants did produce food that was distributed to the Elders.

# Red Cliff Gardens

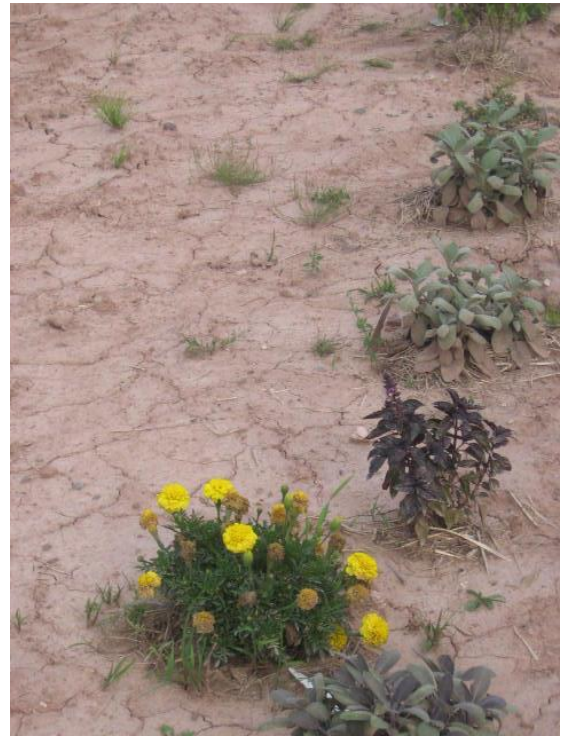




# Cool Old Squash

- These squash were planted from seeds that were obtained from Zachary Paige who works as an Intern for Winona LaDuke at White Earth.
- The squash did very well. Light yellow color at the beginning of the season, orange color later when ready to pick. Very thick flesh inside, sweet and stores well.

# Red Cliff Gardens



# Sweetgrass, Sage and Tobacco

- Sweetgrass was grown as it is a perennial that should come back yearly. Sweetgrass is used for ceremonies and smudging.
- Tobacco was planted so that the tribe would be able to use it in ceremonies or for gifting.
- Sage- different varieties were grown to used for cooking as well as ceremonies.

# Lac du Flambeau Gardens





# Lac du Flambeau Garden

- The plants at the garden site were smaller, stunted plants. Not sure if this was due to the heavy soil and lack of organic material. Maybe the chemicals that have been used in those fields. Or just the late planting due to weather
- Watering was not an issue as they have water ran to the garden site.

# Lac Courte Oreilles Gardens



# Lac Courte Oreilles Garden





# Bad River Gardens





# Bad River Garden

- These gardens produced the most food compared to the other gardens due to the heavy manure.
- The plants all grew very well together, many growing up the stalks of the taller plants.
- The flowers helped with pollination of the plants and brought benefit insects to the gardens to keep the bad bug population down.

# Bad River Gardens



# Canning, Dehydrator, Supplies



# Supplies

- Hot water bath canner
- Big industrial dehydrator
- 2 boxes each of quarts, pints, jelly jars
- Spoons, cutting boards, spoons, measuring cups, knives
- Hanging scale, table scale- measures up to 400 pounds.
- Pressure canner
- Blue Ball Canning Book



# Produce Grown

Tribes used the produce in classes on canning, cooking and dehydrating.

The produced stay at each tribal location to feed that Tribe.

Apples and Strawberries were used from the other tribes at the main college campus to teach canning classes.

# Goals this year- 2014

---

Plant gardens sooner.

Use mulch such as straw.

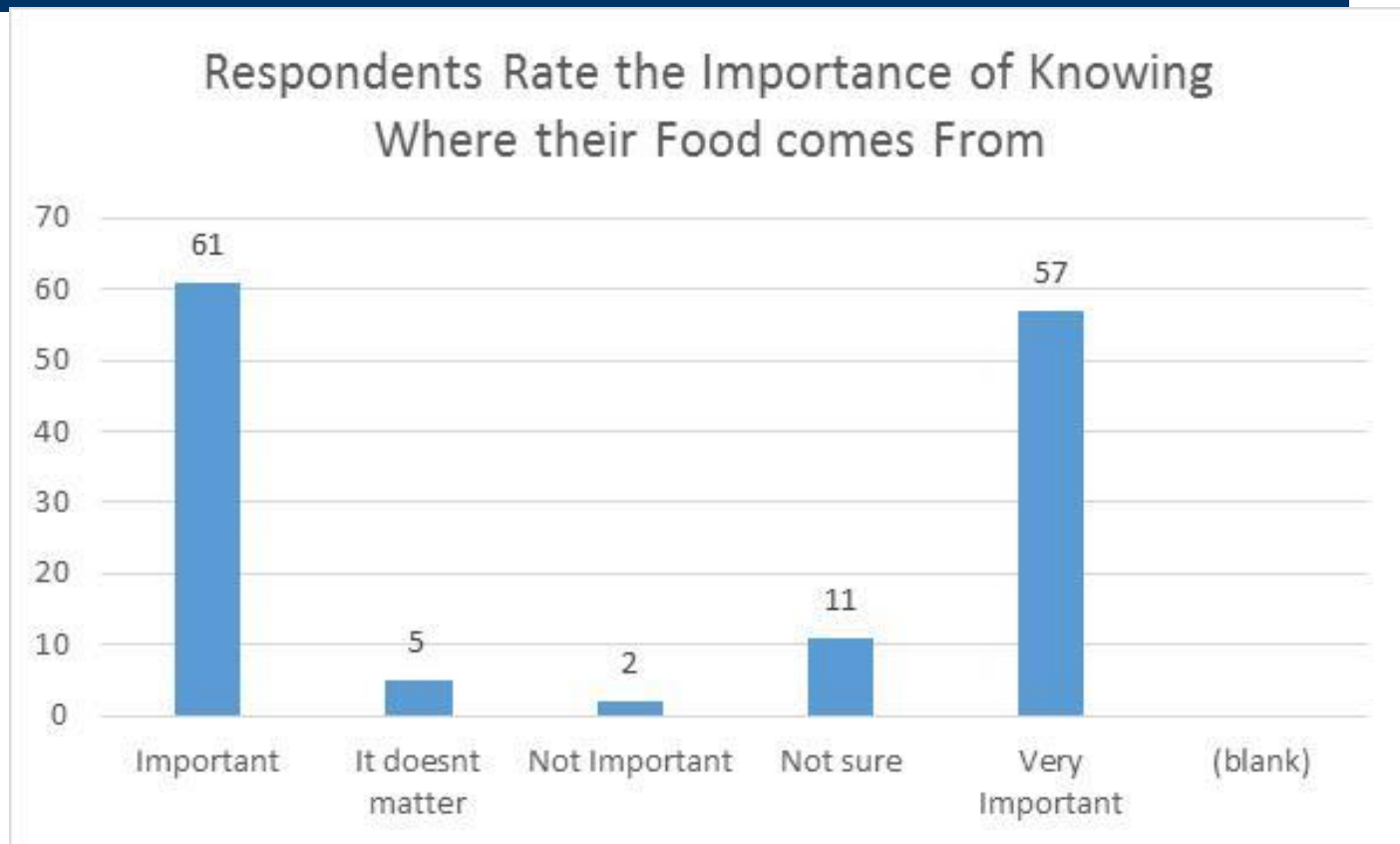
Planting more of the staple foods. Onions, potatoes, tomatoes, beans, squashes.

Put up removable fencing.

Produce more food.

Better record keeping.

# Educating on the difference between healthy, homegrown food and GMO.



# Goals continued

More tools per site.

Help in the orchard with pruning, organic bug control.

Get trees and elderberries for each site.

Move Lac du Flambeau site into town.

Give seeds, teach seed saving classes to help tribes in the future be able to not have to invest so much money to get gardens going.

More training, handouts etc.



# Reference page

---

- Photo credits to Raine Lampert
- Survey data collected and compiled at the Lac Courte Oreilles Ojibwa Community College staff- Amber Marlow, Tyler Turpin, Raine Lampert.

# Miigwech!

Contact information:

Raine Lampert

Lac Courte Oreilles Ojibwa Community College

[lamplorr1610@lco.edu](mailto:lamplorr1610@lco.edu)

715-558-0335