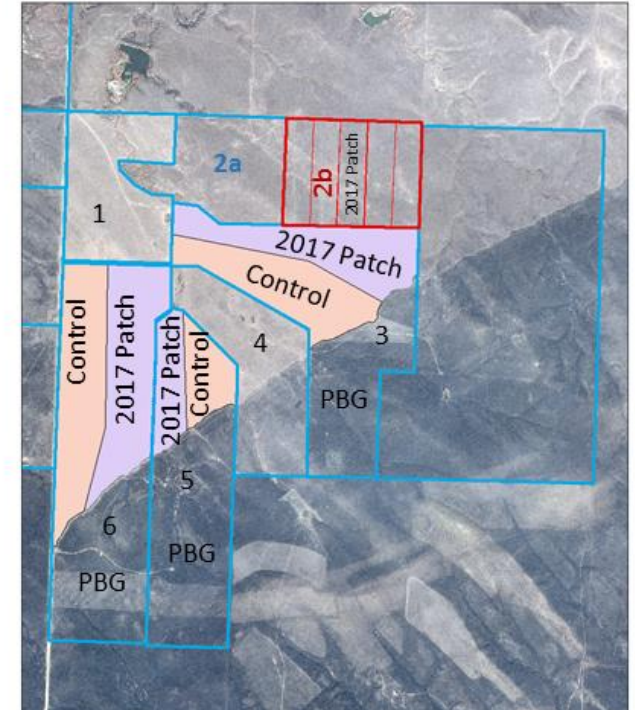
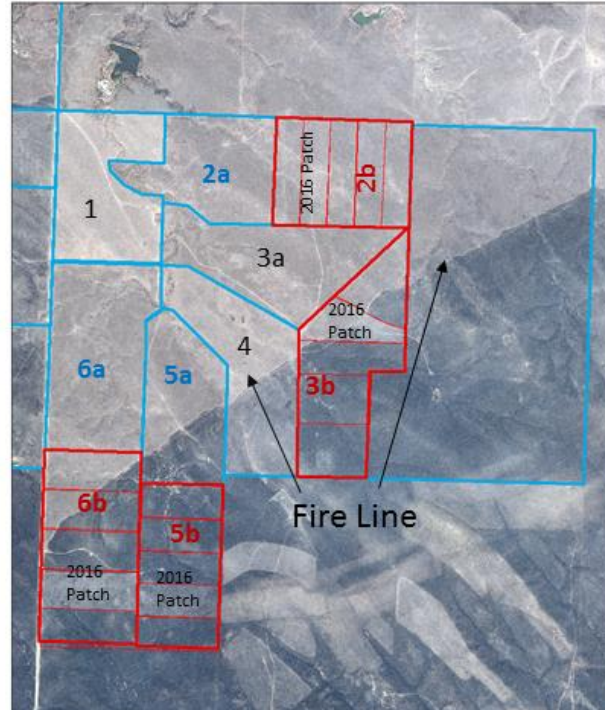
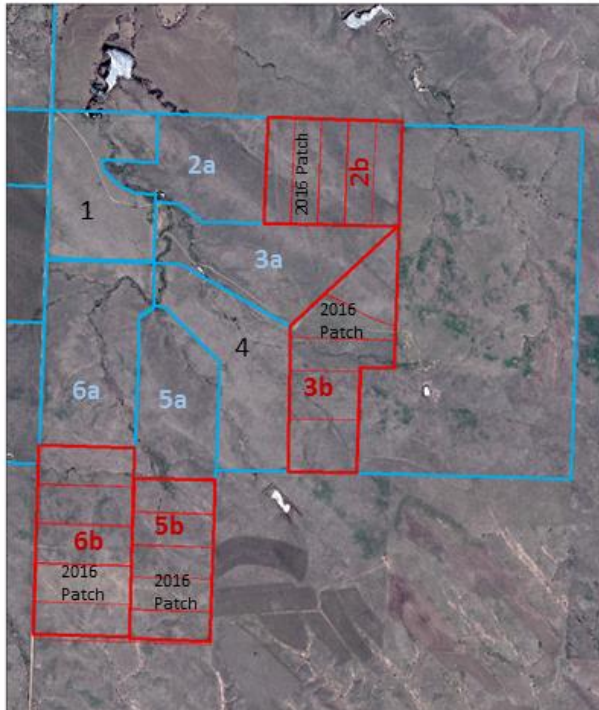


# Attachment

2016 WPG Plan

2016 Cottonwood Fire Area

2017 WPG Plan



**2016 WPG Plan:** Cottonwood Research Station pasture arrangement for study in 2016. Pastures 2b, 3b, 5b, and 6b were winter-patch grazed (WPG) pastures and Pastures 2a, 3a, 5a, and 6a were control pastures (no WPG patches). Patches in WPG pastures are indicated as “2016 Patch”.

**2016 Cottonwood Fire Area:** Cottonwood Research Station pasture arrangement for study in 2016 showing the location of the October 16 fire (Cottonwood Fire) in relation to study pastures.

**2017 WPG Plan:** Cottonwood Research Station pasture arrangement for study in 2017. Pastures 2a and 2b retain the treatment status from 2016 as control and WPG pastures, respectively. Pastures 3a and 3b were combined to form Pasture 3; Pastures 5a and 5b were combined to form Pasture 5; and Pastures 6a and 6b were combined to form Pasture 6. The unburned sections of Pastures 3, 5, and 6 were divided in half. One half was left as control (no WPG or PBG treatment) and the other half received the WPG treatment in winter 2016-17. Cattle will have access to the entire pasture for Pastures 3, 5, and 6 in summer 2017. Pastures 2a and 2b will be grazed in summer 2017 by separate herds.