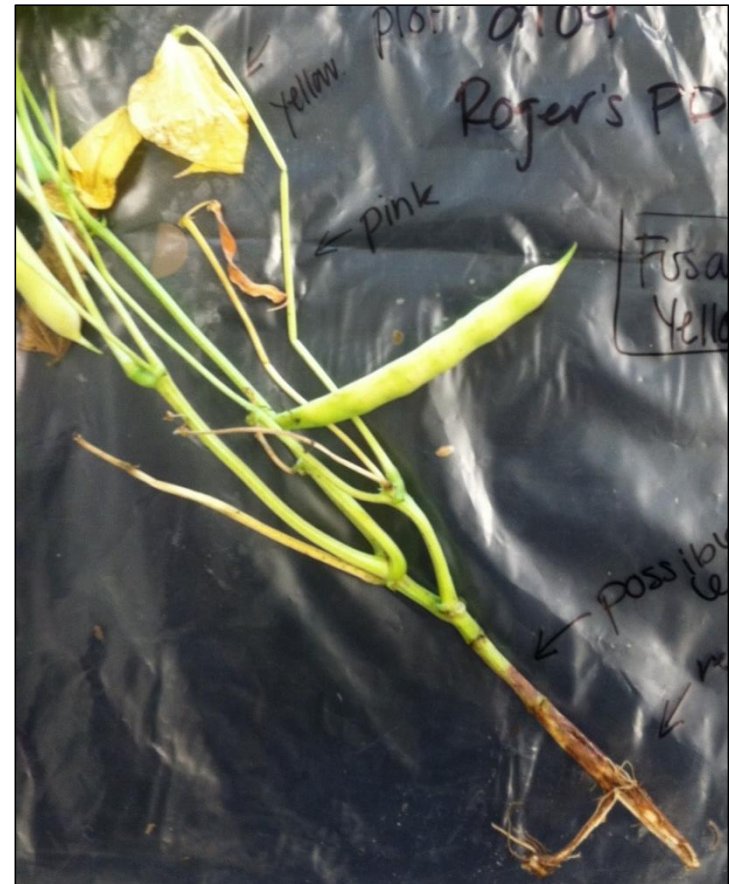


Dry Bean Disease Symptoms

Sclerotinia (white mold)



Fusarium yellows
(pink pods, yellow
leaves, red root)



Anthracnose



Ascochyta caused by *Phoma exigua*



Potato Leafhopper Damage: “Hopperburn”



Alternaria infected on left, healthy on right



Hopperburn allows secondary diseases to colonize: Bacterial Bean Blight



Bacterial Brown Spot

