

Annual Grazing of Cover Crop Forage Field Tour
Picabo Livestock Co.
July 19, 2017



Overview:

- Land Size = 148 acres
- Planting was done with a JD 1590 no-till drill on two dates: West side of field May 11th, East side on May 15th
- First planting blend was:
 - 30# Hayes forage barley
 - 14# Forage Oats
 - 12# Forage Peas
 - 4# Common Vetch
 - 1# Purple-top Turnip
- On June 22nd 150 head of 600# heifers were placed on the first paddock (90,440# total)
- On June 28th an additional 63 head were merged into the herd (42,860# additional – 133,300# total).
- June 29 started grazing 6 – 8 acre paddocks to graze off tops of barley and oats to prevent heading.
- On July 1 the 40 acres in the NW corner was drilled with a warm-season blend of 12# forage wheat, 2.5# sorghum sudan, 2.5# millet, 1# forage radish.
- July 7 – moved back to light grazed areas for 2nd grazing so that we could plant warm-season blend following cattle.
- July 11 – planted 17 acres with new warm season blend: 15# forage wheat, 5# sorghum sudan, 5# millet, 1# forage radish.
- Warm season blend will be planted with no-till drill in increments as cattle move around the circle.

Grazing:

Yields (Max: 4,325 lb/A ---- Min: 897 lb/A); Average = 1,519 lb/A

Forage Quality

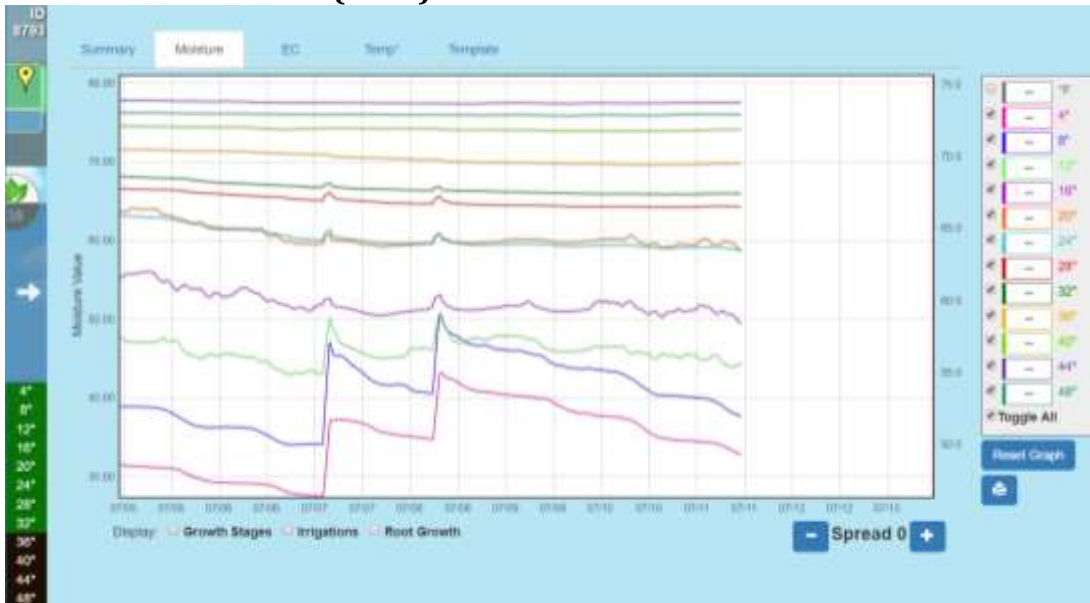
Pre-Grazed 6/27: Crude Protein (26.7%), ADF (18.6%), aNDF (27.4%)

Post-Grazed 6/28: Crude Protein (16.7%), ADF (23%), aNDF (34.3%)

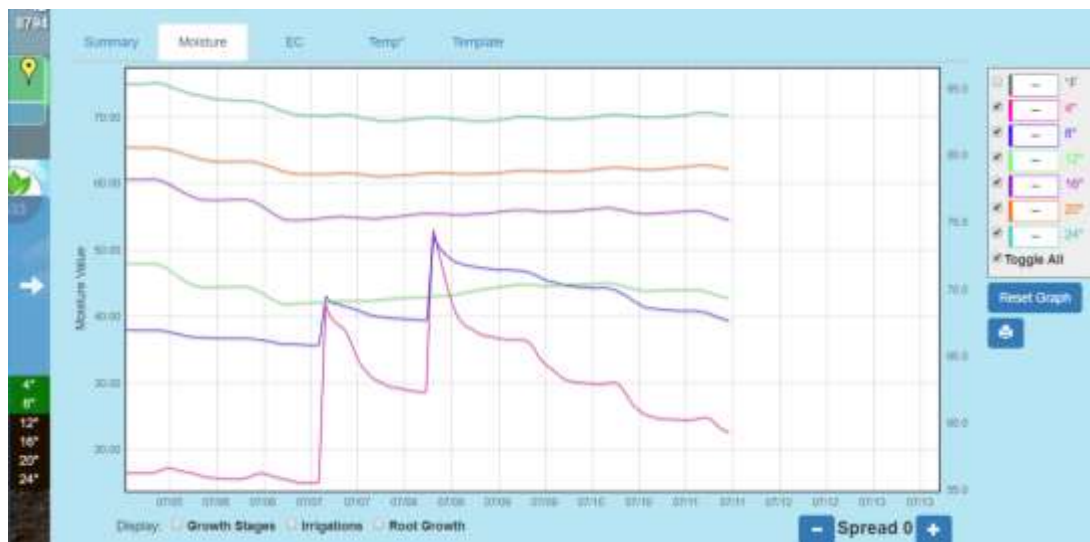
Pre-Grazed 7/12: Crude Protein (13.7%), ADF (29%), aNDF (44.9%)

Grazing Utilization Range: (30%----80%)

Soil Moisture Profile (LESA):



LESA Span Moisture Profile. Note irrigation response down to 36” level.



Rotator Span Moisture Profile. Note that moisture response is only seen to 8” with some affect at 12”.

To enrich education through diversity the University of Idaho is an equal opportunity/ affirmative action employer and educational institution. University of Idaho and U.S. Department of Agriculture Cooperating.