

Figure 5. Seed retention per rattail fescue plant (%) in relation to calendar days in 2016, 2017, and 2018. The parameters in the equation indicate the percentage of seed retention by July 15 and the rate of seed shedding. Dotted vertical lines indicate July 15. Dots with symmetrical lines (standard errors) indicate experimental data and curves represent the fitted models.

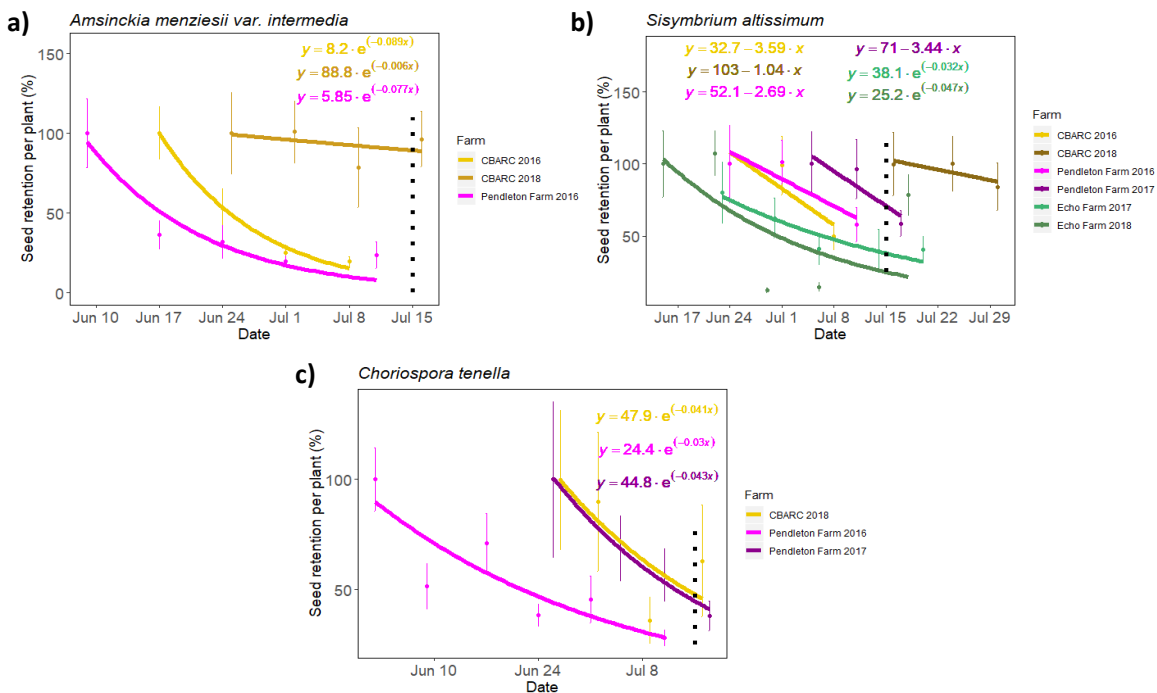


Figure 6. Seed retention per plant (%) for all years in relation to calendar days for a) fiddleneck, b) tumble mustard, and c) purple mustard. The parameters in the equations indicate the percentage of seed retention on July 15 and the rate of seed shedding. Dotted vertical lines indicate July 15. Dots with symmetrical lines (standard errors) indicate experimental data and curves represent the fitted models.