

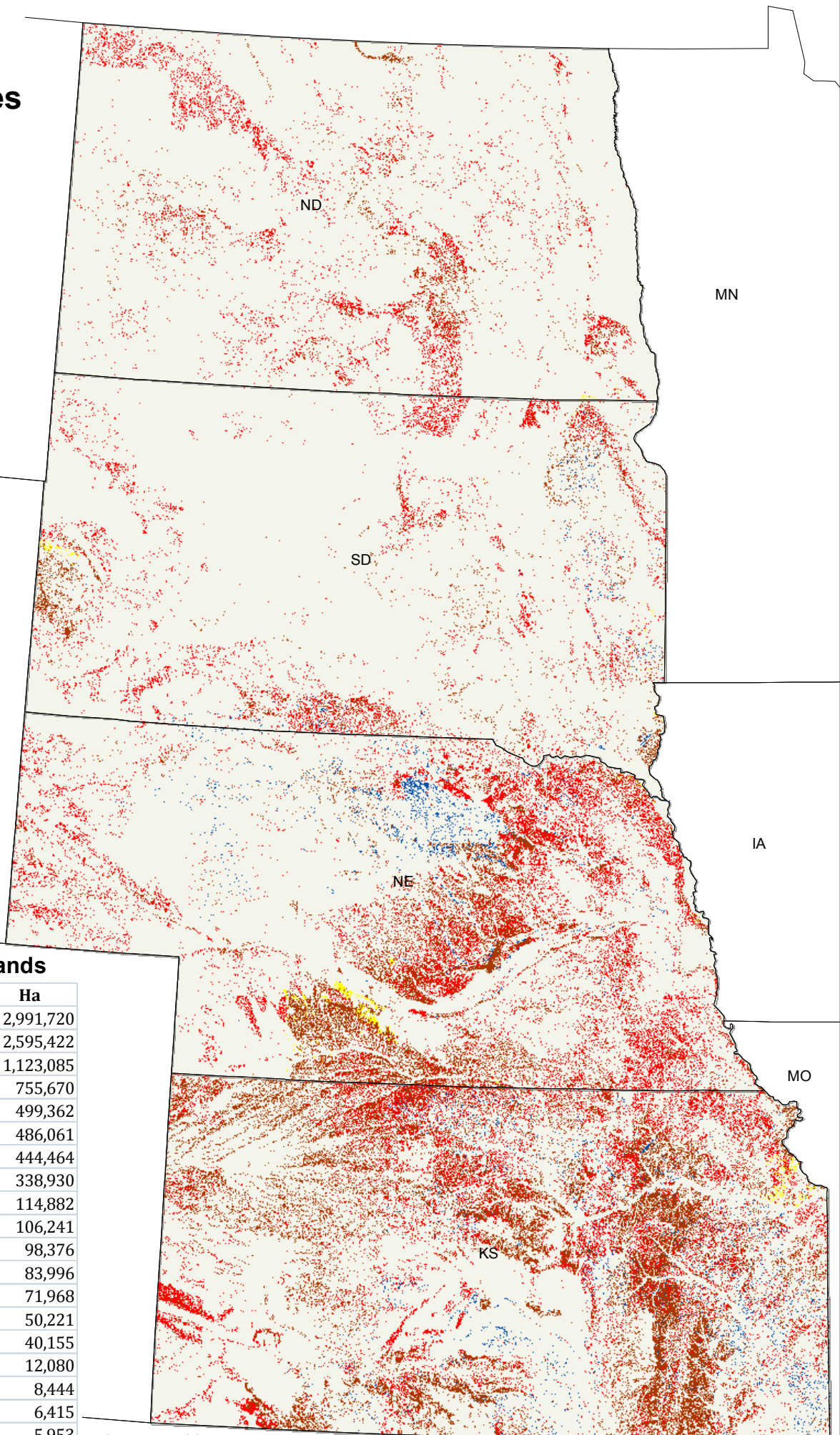
# Marginal Lands Assessment in Prairie Landscapes

NCCPI (0.25 - 0.75)

Non\_irr\_LCC



9,860,190 Ha  
12.4% of 4 states



## Landcover of Selected Lands

Landcover	Pct_Total	Ha
Grassland Herbaceous	30.3	2,991,720
Grass/ Pasture	26.3	2,595,422
Pasture/ Hay	11.4	1,123,085
Corn	7.7	755,670
Forest	5.1	499,362
Soybeans	4.9	486,061
Non-agricultural	4.5	444,464
Winter Wheat	3.4	338,930
Fallow/ Idle Cropland	1.2	114,882
Other Hays	1.1	106,241
Sorghum	1.0	98,376
Spring Wheat	0.9	83,996
Alfalfa	0.7	71,968
Water	0.5	50,221
Durum Wheat	0.4	40,155
Sunflowers	0.1	12,080
Peas	0.1	8,444
Canola	0.1	6,415
Oats	0.1	5,953

Source: NRCS

OK