

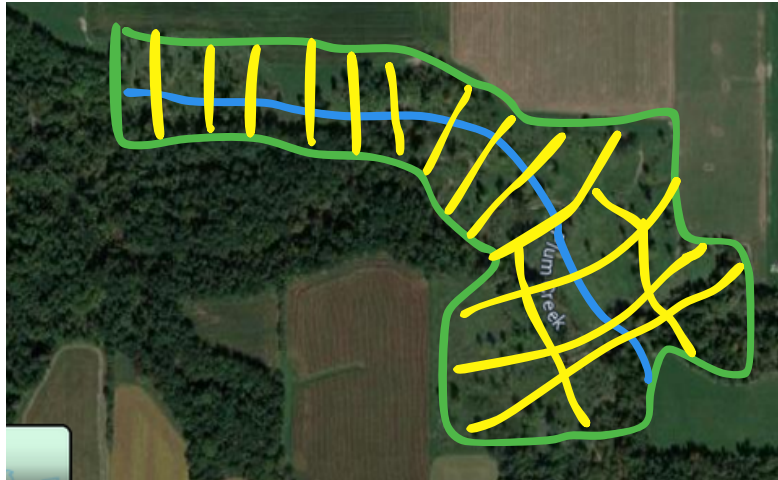
**Site 1: 55 Acre Island**

*Approximately 36 paddocks of 1.5 acres, graze in May/June*



**Site 2: 40 Acre Ravine**

*Approximately 26 paddocks of 1.5 acres, graze after Site 1*



**Site 3: 12 Acre Ravine**

*Approximately 8 paddocks of 1.5 acres, graze after Site 2*



**Legend:**

Above blue line: Leader-follower section

Below blue line: Mob grazing section

Yellow lines, combined with blue, show potential example paddocks (not to scale)