



Troy Palmer

Troy Palmer

Research Area 1

Area: 2.05 ac

Farm Imagery

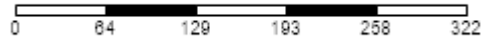


Grower: Troy Palmer
Farm: Troy Palmer
Field: Research Area 1
Number of Fields: 1
Area: 2.05 ac

— Research Area 1 (2.05 ac)
— Other Fields



One in = 138 feet

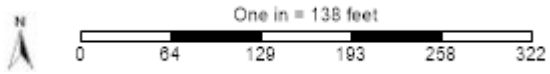


Soil Test Point Sample ID

Grower: Troy Palmer
Farm: Troy Palmer
Field: Research Area 1
Area: 2.05 ac
Event Date(s): 3/29/2021

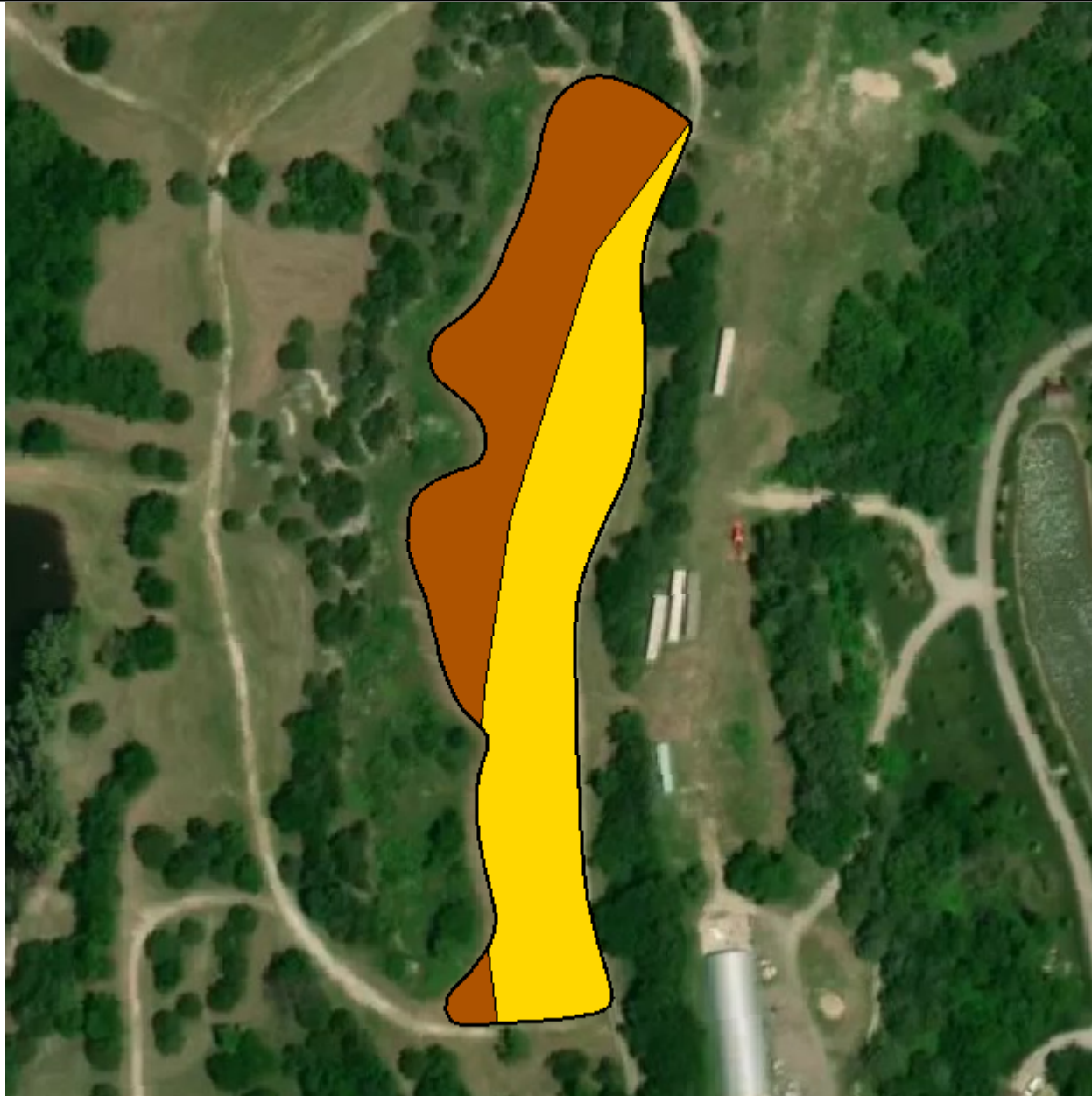


- Field Boundary
- Soil Test Points



Soil Type

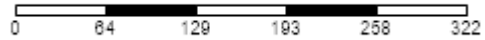
Grower: Troy Palmer
Farm: Troy Palmer
Field: Research Area 1
Area: 2.05 ac



- Field Boundary
- Soil Type
- Clime-Sogn complex, 3 to 20 percent slopes (0.9 ac) (44.8%)
- Labette-Sogn silty clay loams, 0 to 8 percent slopes (1.1 ac) (55.2%)



One in = 138 feet



Soil Test Results

Grower: Troy Palmer
 Farm: Troy Palmer
 Field: Research Area 1
 Area: 2.05 ac
 Event Date(s): 3/29/2021

Min:	7.2	7.1	2.9	5	19	13	267	3,058	137	4	18.0	5	3	1.1	0.4	0.5	2	22	82.4	0.1	3.1	4.4
Max:	7.7	7.1	8.9	82	115	66	462	4,745	259	9	25.8	14	7	5.0	0.7	1.0	4	55	92.2	0.2	6.0	11.4
Avg:	7.4	7.1	6.4	29	64	31	366	3,830	198	6	21.8	8	5	2.8	0.5	0.7	3	36	87.7	0.1	4.4	7.8

Sample ID	pH	BpH	OM	P Bray 1	P Bray 2	P Olsen	K	Ca	Mg	Na	CEC	NO3-N lbs	S ppm	Zn	B	Cu	Mn	Fe	%Ca	%Na	%K	%Mg
1	7.2	7.1	8.7	57	110		445	3,139	259	9	19.0	14	7	4.4	0.5	0.7	3	55	82.4	0.2	6.0	11.4
2	7.2	7.1	6.5	29	55		462	3,679	236	6	21.6	7	4	3.1	0.7	1.0	3	47	85.3	0.1	5.5	9.1
3	7.2	7.1	6.1	19	30		330	3,595	193	6	20.5	7	4	2.0	0.4	0.7	3	33	88.0	0.1	4.1	7.8
4	7.6	7.1	5.3	15	98	26	388	4,305	215	6	24.3	5	7	2.4	0.6	0.8	4	36	88.4	0.1	4.1	7.4
5	7.7	7.1	2.9	5	19	13	337	4,745	137	6	25.8	5	3	1.1	0.5	0.8	3	30	92.2	0.1	3.3	4.4
6	7.6	7.1	8.9	82	115	66	400	3,189	236	9	19.0	11	5	5.0	0.4	0.7	3	42	84.0	0.2	5.4	10.4
7	7.4	7.1	7.9	48	94	44	352	3,058	211	6	18.0	11	4	3.6	0.4	0.6	2	38	85.1	0.1	5.0	9.8
8	7.2	7.1	5.7	6	28		267	4,068	149	6	22.3	5	4	2.0	0.4	0.7	3	23	91.2	0.1	3.1	5.6
9	7.5	7.1	4.9	15	45	23	382	4,510	192	6	25.2	5	5	2.0	0.5	0.7	3	29	89.7	0.1	3.9	6.3
10	7.6	7.1	7.1	14	41	16	294	4,011	153	4	22.1	9	3	2.4	0.4	0.5	2	22	90.7	0.1	3.4	5.8

P Bray 1 Surface



Grower: Troy Palmer
Farm: Troy Palmer
Field: Research Area 1
Area: 2.05 ac
Event Date(s): 3/29/2021

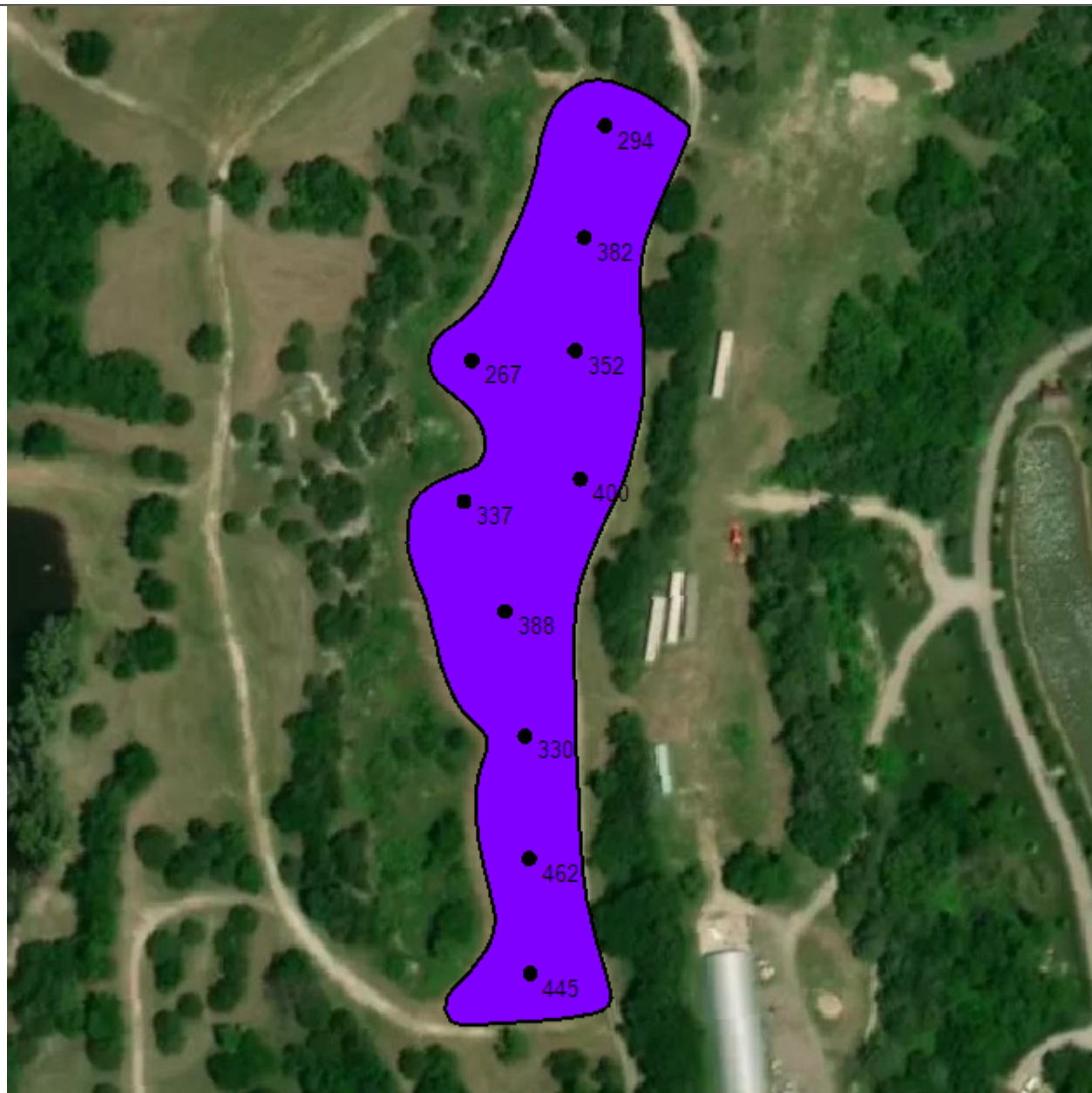
Season: 2021
Min: 1.79 ppm
Avg: 29.45 ppm
Max: 81.13 ppm

- Field Boundary
- P Bray 1 Surface ppm
- Very Low 0 - 5 ppm (0.1 ac) (2.5%)
- Low 5 - 12 ppm (0.6 ac) (27.3%)
- Medium 12 - 22 ppm (0.3 ac) (14.0%)
- Optimum 22 - 27 ppm (0.2 ac) (9.0%)
- High 27 - 35 ppm (0.3 ac) (13.8%)
- Excess > 35 ppm (0.7 ac) (32.8%)



One in = 138 feet
0 64 129 193 258 322

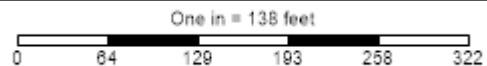
Potassium Surface



Grower: Troy Palmer
Farm: Troy Palmer
Field: Research Area 1
Area: 2.05 ac
Event Date(s): 3/29/2021

Season: 2021
Min: 281.90 ppm
Avg: 368.00 ppm
Max: 454.19 ppm

- Field Boundary
- Potassium Surface ppm
- Very Low 0 - 40 ppm (0.0 ac) (0.0%)
- Low 40 - 80 ppm (0.0 ac) (0.0%)
- Medium 80 - 150 ppm (0.0 ac) (0.0%)
- Optimum 150 - 200 ppm (0.0 ac) (0.0%)
- High 200 - 250 ppm (0.0 ac) (0.0%)
- Very High > 250 ppm (2.0 ac) (100.0%)



pH Surface



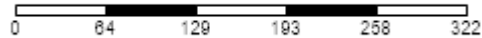
Grower: Troy Palmer
Farm: Troy Palmer
Field: Research Area 1
Area: 2.05 ac
Event Date(s): 3/29/2021

Season: 2021
Min: 7.20
Avg: 7.42
Max: 7.65

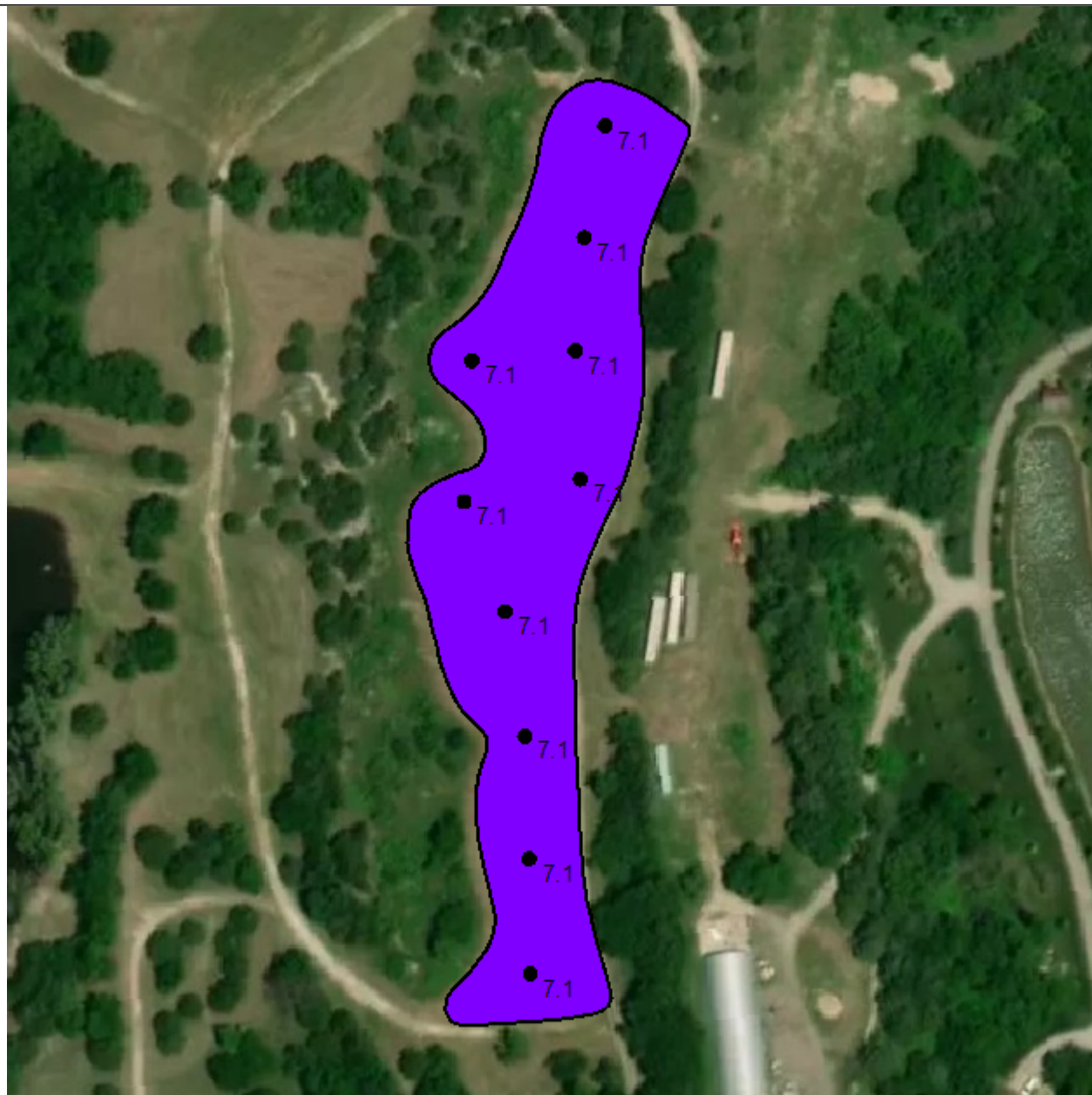
Field Boundary	
pH Surface	
Yellow	Excessive Acid 0 - 5 pH (0.0 ac) (0.0%)
Orange	Acidic 5.1 - 5.5 pH (0.0 ac) (0.0%)
Red	Slightly Acidic 5.5 - 6.1 pH (0.0 ac) (0.0%)
Pink	Grain Optimum 6.1 - 6.6 pH (0.0 ac) (0.0%)
Purple	Alfalfa Optimum 6.6 - 7.5 pH (1.3 ac) (65.3%)
Blue	Alkaline > 7.5 pH (0.7 ac) (34.7%)



One in = 138 feet



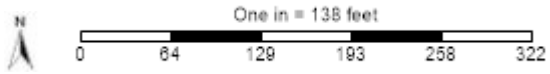
BpH Surface



Grower: Troy Palmer
Farm: Troy Palmer
Field: Research Area 1
Area: 2.05 ac
Event Date(s): 3/29/2021

Season: 2021
Min: 7.10
Avg: 7.10
Max: 7.10

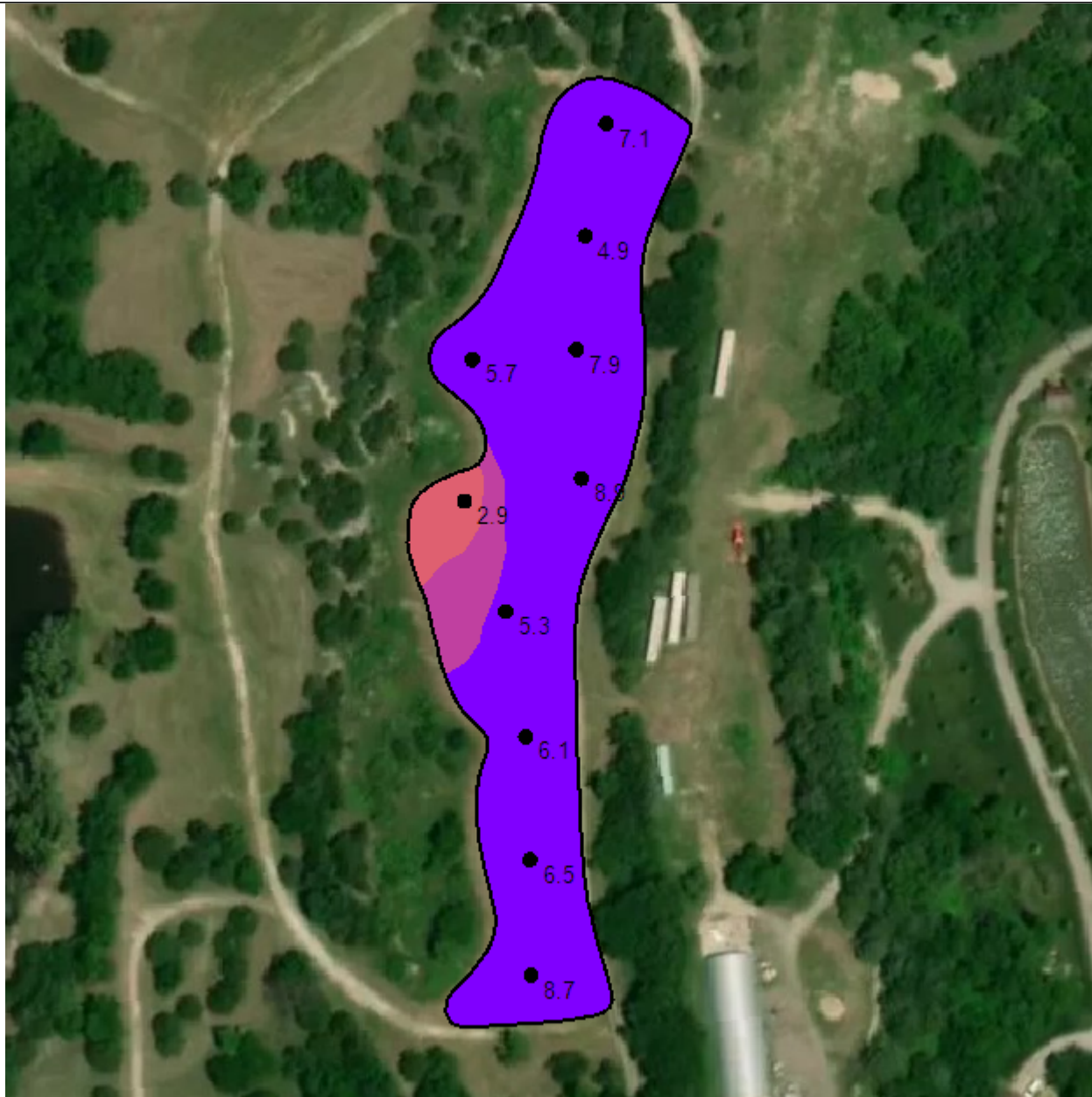
Field Boundary	
—	Field Boundary
BpH Surface	
■	0.0 - 6.2 (0.0 ac) (0.0%)
■	6.2 - 6.4 (0.0 ac) (0.0%)
■	6.4 - 6.6 (0.0 ac) (0.0%)
■	> 6.6 (2.0 ac) (100.0%)



Organic Matter Surface

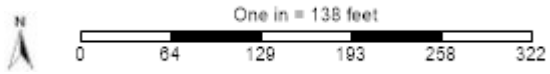
Grower: Troy Palmer
Farm: Troy Palmer
Field: Research Area 1
Area: 2.05 ac
Event Date(s): 3/29/2021

Season: 2021
Min: 3.06 Percent
Avg: 6.43 Percent
Max: 8.93 Percent



Field Boundary	
—	Organic Matter Surface Percent

Color	Range (%)	Area (ac)	Percentage
Yellow	0.0 - 1.0	0.0	0.0%
Orange	1.0 - 2.0	0.0	0.0%
Red	2.0 - 3.0	0.0	0.0%
Pink	3.0 - 4.0	0.1	5.6%
Purple	4.0 - 5.0	0.2	8.7%
Blue	> 5.0	1.8	85.6%



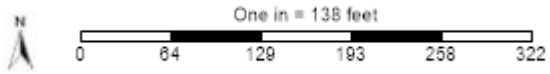
Cation Exchange Capacity Surface

Grower: Troy Palmer
 Farm: Troy Palmer
 Field: Research Area 1
 Area: 2.05 ac
 Event Date(s): 3/29/2021

Season: 2021
 Min: 18.31 meq/100 g
 Avg: 21.77 meq/100 g
 Max: 25.82 meq/100 g



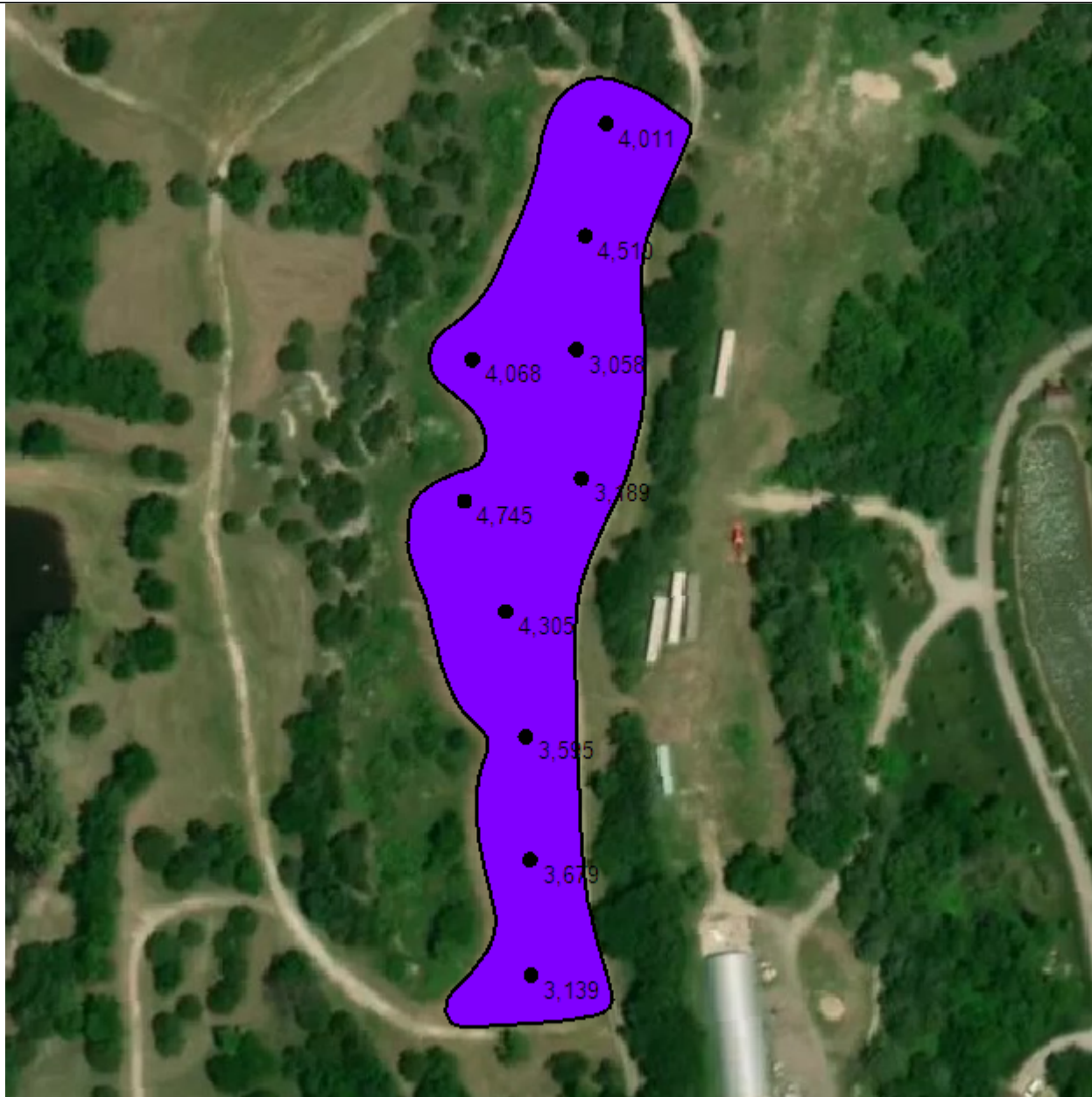
Field Boundary	
Cation Exchange Capacity Surface meq/100 g	
Very Light 0 - 5 (0.0 ac) (0.0%)	
Light 5 - 10 (0.0 ac) (0.0%)	
Optimum 1 10 - 15 (0.0 ac) (0.0%)	
Optimum 2 15 - 20 (0.3 ac) (16.6%)	
Heavy 20 - 25 (1.6 ac) (76.3%)	
Very Heavy > 25 (0.1 ac) (7.1%)	



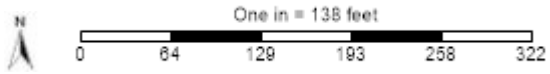
Calcium Surface

Grower: Troy Palmer
 Farm: Troy Palmer
 Field: Research Area 1
 Area: 2.05 ac
 Event Date(s): 3/29/2021

Season: 2021
 Min: 3,072.82 ppm
 Avg: 3,822.59 ppm
 Max: 4,744.17 ppm



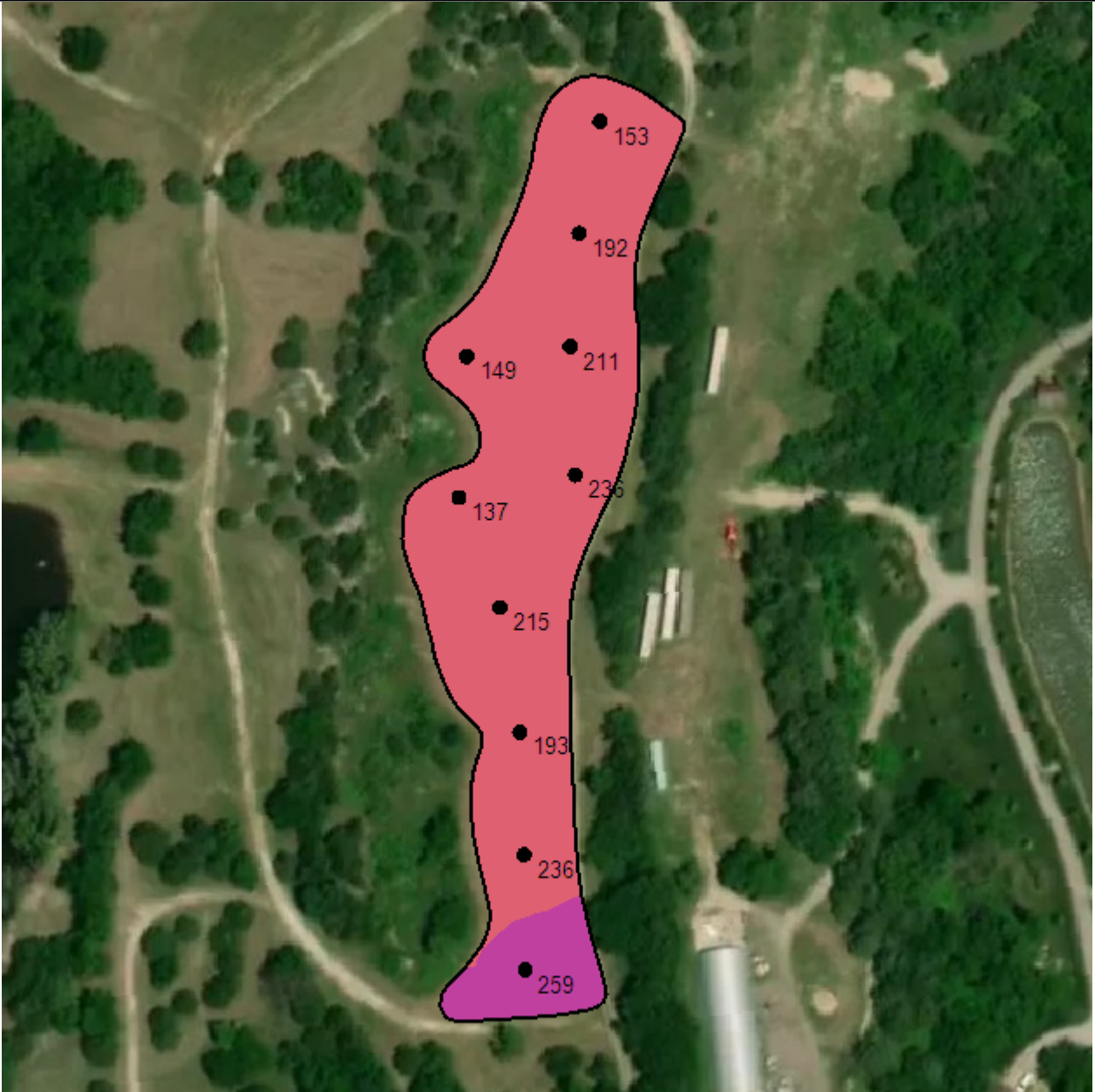
Field Boundary	
Calcium Surface ppm	
Very Low 0 - 500 ppm (0.0 ac) (0.0%)	
Low 500 - 1000 ppm (0.0 ac) (0.0%)	
Medium 1000 - 1500 ppm (0.0 ac) (0.0%)	
Optimum 1500 - 2000 ppm (0.0 ac) (0.0%)	
High 2000 - 2500 ppm (0.0 ac) (0.0%)	
Very High > 2500 ppm (2.0 ac) (100.0%)	



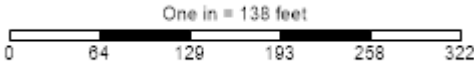
Magnesium Surface

Grower: Troy Palmer
 Farm: Troy Palmer
 Field: Research Area 1
 Area: 2.05 ac
 Event Date(s): 3/29/2021

Season: 2021
 Min: 142.96 ppm
 Avg: 200.14 ppm
 Max: 261.28 ppm



—	Field Boundary
	Magnesium Surface ppm
■	Very Low 0 - 37 ppm (0.0 ac) (0.0%)
■	Low 37 - 75 ppm (0.0 ac) (0.0%)
■	Medium 75 - 120 ppm (0.0 ac) (0.0%)
■	Optimum 120 - 250 ppm (1.8 ac) (88.4%)
■	High 250 - 375 ppm (0.2 ac) (11.6%)
■	Excess > 375 ppm (0.0 ac) (0.0%)



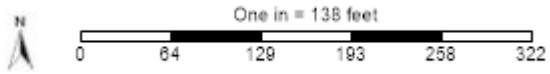
Sulfur - ppm



Grower: Troy Palmer
Farm: Troy Palmer
Field: Research Area 1
Area: 2.05 ac
Event Date(s): 3/29/2021

Season: 2021
Min: 3.08 ppm
Avg: 4.69 ppm
Max: 6.88 ppm

Field Boundary	
Sulfur Surface ppm	
Very Low 0 - 5 ppm (1.4 ac) (69.8%)	
Low 5 - 10 ppm (0.6 ac) (30.2%)	
Medium 10 - 15 ppm (0.0 ac) (0.0%)	
Optimum 15 - 20 ppm (0.0 ac) (0.0%)	
High 20 - 25 ppm (0.0 ac) (0.0%)	
Very High > 25 ppm (0.0 ac) (0.0%)	



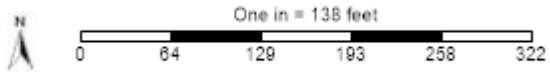
Zinc Surface

Grower: Troy Palmer
 Farm: Troy Palmer
 Field: Research Area 1
 Area: 2.05 ac
 Event Date(s): 3/29/2021

Season: 2021
 Min: 1.06 ppm
 Avg: 2.82 ppm
 Max: 4.98 ppm



Field Boundary	
Zinc Surface ppm	
Very Low	0 - 0.5 ppm (0.0 ac) (0.0%)
Low	0.5 - 1.0 ppm (0.0 ac) (0.0%)
Medium	1.0 - 2.5 ppm (1.0 ac) (47.0%)
Optimum	2.5 - 4.0 ppm (0.8 ac) (40.5%)
High	4.0 - 6.0 ppm (0.3 ac) (12.6%)
Very High	> 6.0 ppm (0.0 ac) (0.0%)



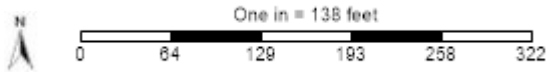
Boron Surface

Grower: Troy Palmer
Farm: Troy Palmer
Field: Research Area 1
Area: 2.05 ac
Event Date(s): 3/29/2021

Season: 2021
Min: 0.40 ppm
Avg: 0.48 ppm
Max: 0.65 ppm



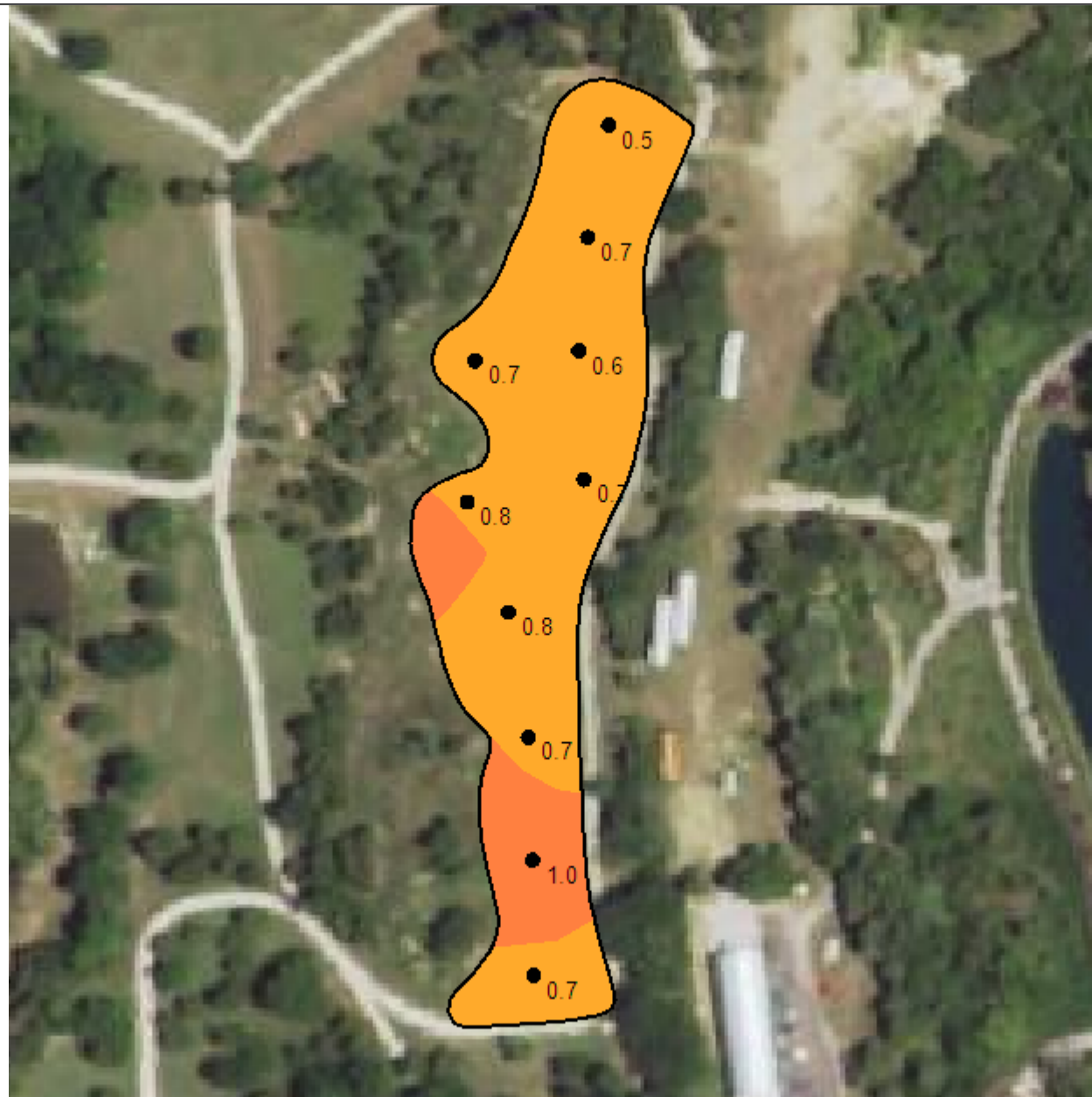
—	Field Boundary
	Boron Surface ppm
■	< 0.3 Very Low (0.0 ac) (0.0%)
■	0.4 - 0.5 Low (1.2 ac) (57.9%)
■	0.6 - 1.2 Medium (0.9 ac) (42.1%)
■	1.3 - 2.0 High (0.0 ac) (0.0%)
■	> 2 Very High (0.0 ac) (0.0%)



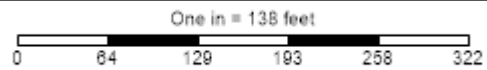
Copper Surface

Grower: Troy Palmer
Farm: Troy Palmer
Field: Research Area 1
Area: 2.05 ac
Event Date(s): 3/29/2021

Season: 2021
Min: 0.50 ppm
Avg: 0.72 ppm
Max: 0.95 ppm



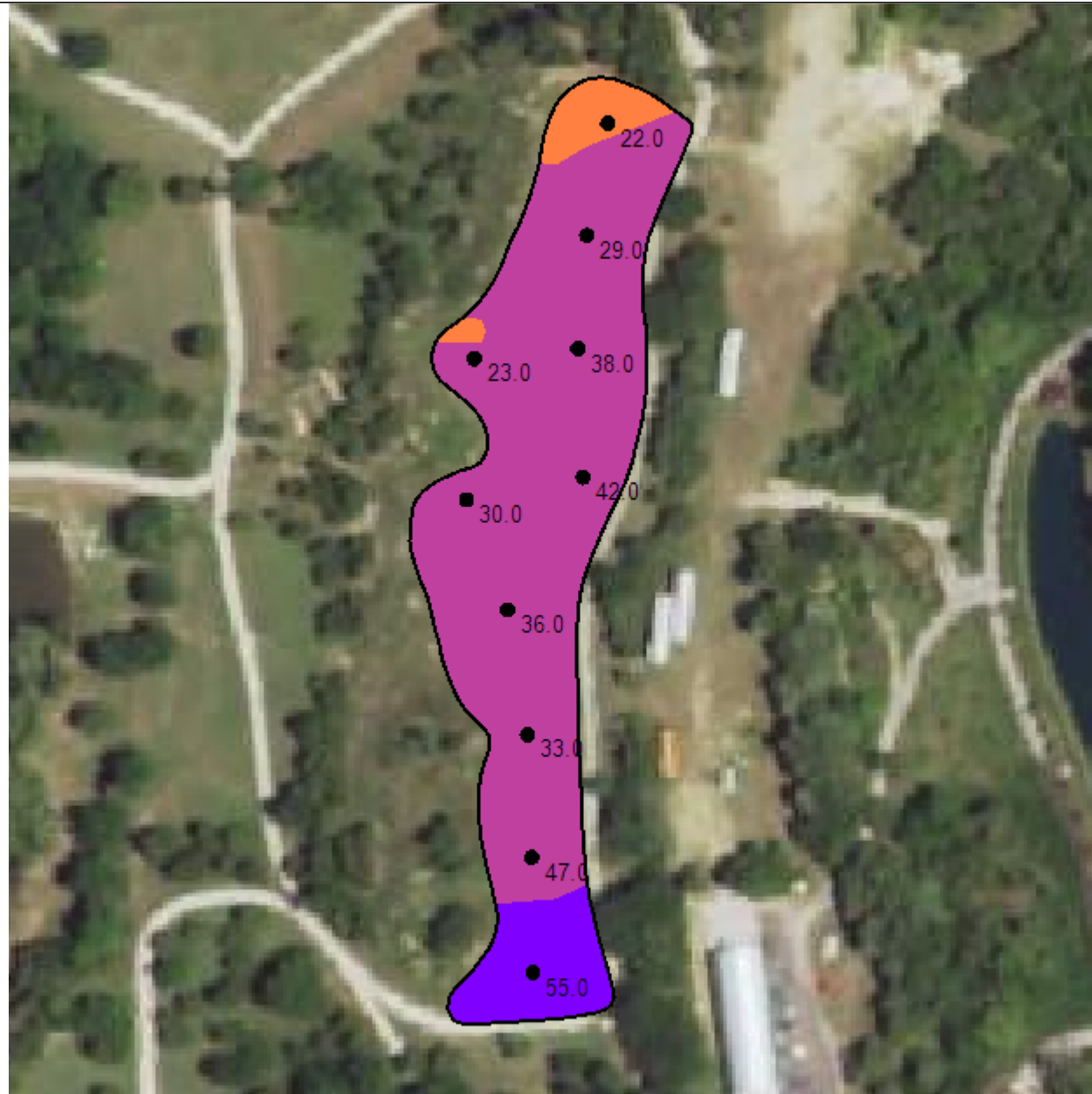
—	Field Boundary
	Copper Surface ppm
■	< 0.3 Very Low (0.0 ac) (0.0%)
■	0.4 - 0.8 Low (1.6 ac) (80.0%)
■	0.9 - 1.5 Medium (0.4 ac) (20.0%)
■	1.6 - 3.0 High (0.0 ac) (0.0%)
■	> 3 Very High (0.0 ac) (0.0%)



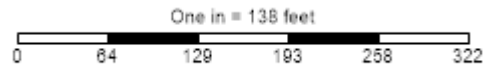
Iron Surface

Grower: Troy Palmer
Farm: Troy Palmer
Field: Research Area 1
Area: 2.05 ac
Event Date(s): 3/29/2021

Season: 2021
Min: 21.68 ppm
Avg: 35.77 ppm
Max: 54.99 ppm



Field Boundary	
Iron Surface ppm	
Yellow	< 3 Very Low (0.0 ac) (0.0%)
Orange	4 - 11 Low (0.0 ac) (0.0%)
Light Orange	12 - 24 Medium (0.2 ac) (9.1%)
Pink	25 - 50 High (1.6 ac) (78.0%)
Blue	> 50 Very High (0.3 ac) (12.9%)



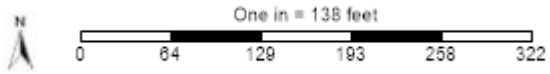
Manganese Surface

Grower: Troy Palmer
Farm: Troy Palmer
Field: Research Area 1
Area: 2.05 ac
Event Date(s): 3/29/2021

Season: 2021
Min: 2.01 ppm
Avg: 2.92 ppm
Max: 3.72 ppm



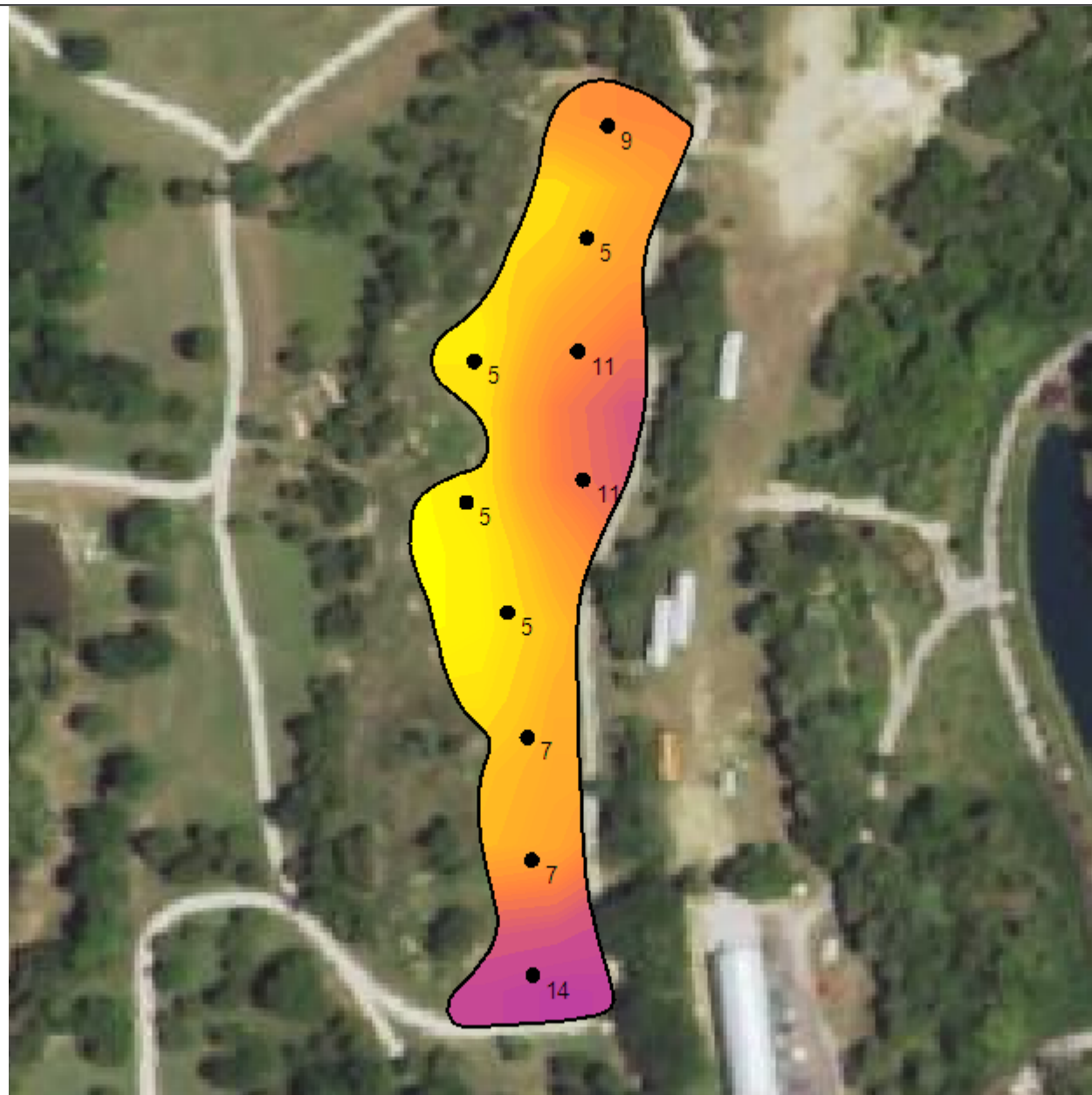
—	Field Boundary
■	Manganese Surface ppm
■	< 5 Very Low (2.0 ac) (100.0%)
■	6 - 14 Low (0.0 ac) (0.0%)
■	15 - 29 Medium (0.0 ac) (0.0%)
■	30 - 49 High (0.0 ac) (0.0%)
■	> 50 Very High (0.0 ac) (0.0%)



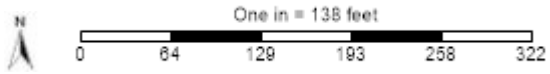
NO3-N - lbs

Grower: Troy Palmer
Farm: Troy Palmer
Field: Research Area 1
Area: 2.05 ac
Event Date(s): 3/29/2021

Season: 2021
Min: 4.47 lb/ac
Avg: 7.93 lb/ac
Max: 13.88 lb/ac



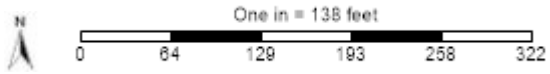
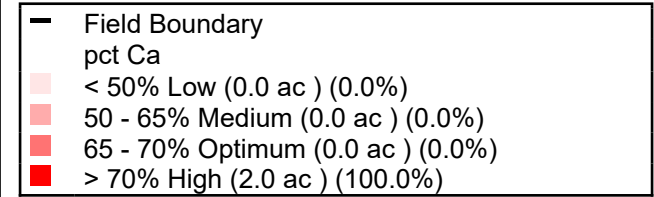
Field Boundary
NO3-N lb/ac
4 - 6 (0.6 ac) (28.5%)
6 - 8 (0.8 ac) (38.2%)
9 - 10 (0.3 ac) (15.7%)
11 - 11 (0.2 ac) (10.0%)
13 - 14 (0.2 ac) (7.6%)



pct Ca

Grower: Troy Palmer
Farm: Troy Palmer
Field: Research Area 1
Area: 2.05 ac
Event Date(s): 3/29/2021

Season: 2021
Min: 82.29
Avg: 87.59
Max: 92.18



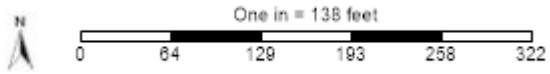
pct K



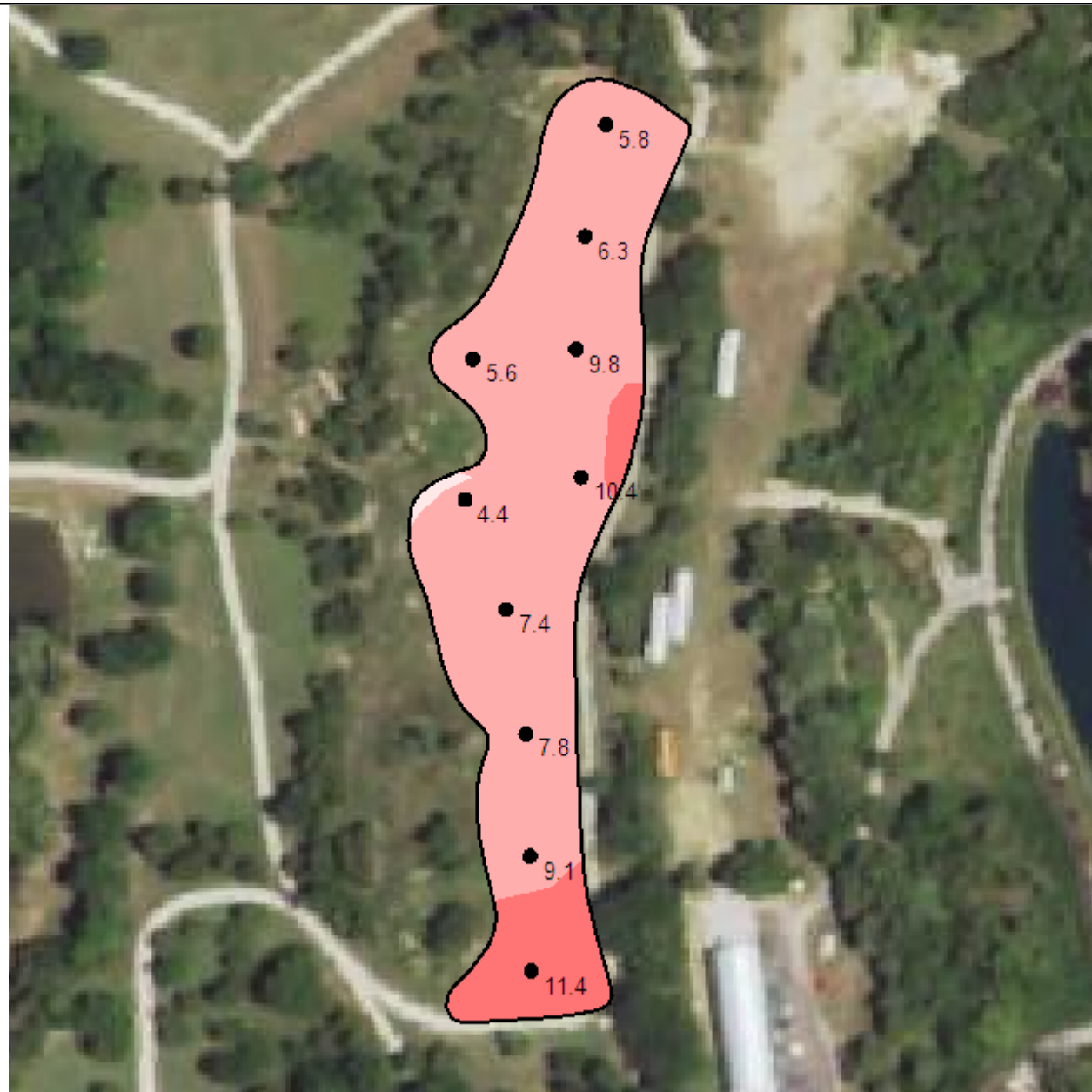
Grower: Troy Palmer
Farm: Troy Palmer
Field: Research Area 1
Area: 2.05 ac
Event Date(s): 3/29/2021

Season: 2021
Min: 3.19
Avg: 4.41
Max: 6.06

—	Field Boundary
pct K	
□	< 1% Low (0.0 ac) (0.0%)
□	1 - 2% Medium (0.0 ac) (0.0%)
□	2 - 7% Optimum (2.0 ac) (100.0%)
□	> 7% High (0.0 ac) (0.0%)



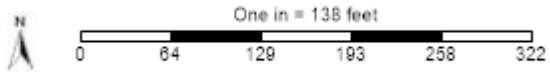
pct Mg



Grower: Troy Palmer
Farm: Troy Palmer
Field: Research Area 1
Area: 2.05 ac
Event Date(s): 3/29/2021

Season: 2021
Min: 4.49
Avg: 7.88
Max: 11.47

Field Boundary	
pct Mg	
	< 5% Low (0.0 ac) (0.7%)
	5 - 10% Medium (1.7 ac) (81.7%)
	10 - 15% Optimum (0.4 ac) (17.6%)
	> 15% High (0.0 ac) (0.0%)



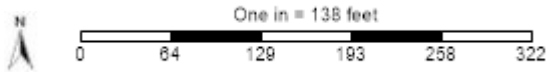
pct Na



Grower: Troy Palmer
Farm: Troy Palmer
Field: Research Area 1
Area: 2.05 ac
Event Date(s): 3/29/2021

Season: 2021
Min: 0.09
Avg: 0.12
Max: 0.20

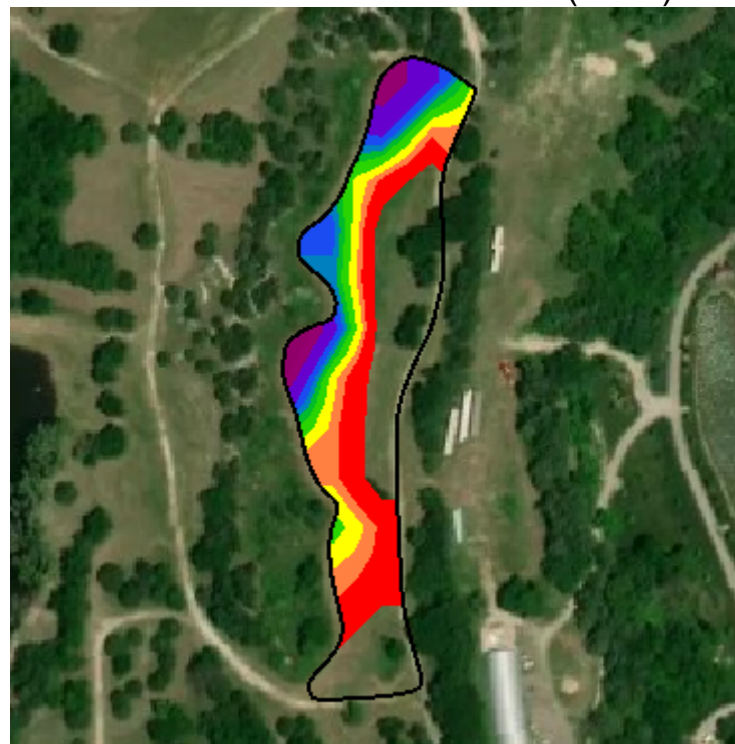
—	Field Boundary
pct Na	
■	< 2% Optimum (2.0 ac) (100.0%)
■	2 - 5% High (0.0 ac) (0.0%)
■	> 5% Very High (0.0 ac) (0.0%)



P Bray 1 Surface (2021)



P Product Recommendation (2021)



Grower: Troy Palmer
 Farm: Troy Palmer
 Field: Research Area 1
 Area: 2.05 ac

Event Date(s): 3/29/2021
 Season: 2021
 Min: 1.79 ppm
 Avg: 29.45 ppm
 Max: 81.13 ppm

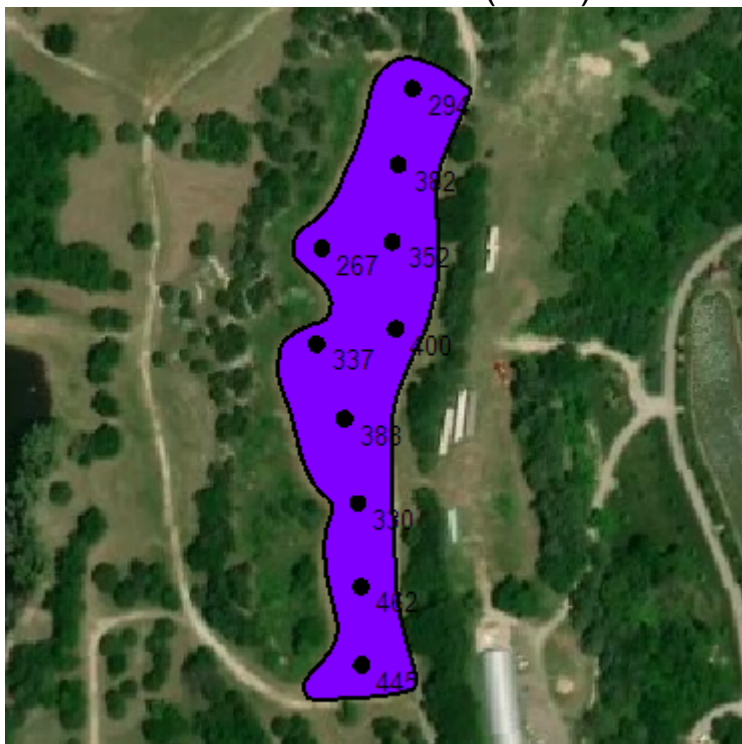
Season: 2021
 Min Rate: 40.00 lb/ac
 Avg Rate: 82.72 lb/ac
 Max Rate: 240.00 lb/ac
 Total Product: 93.37 lb
 Applied Area: 1.13 ac
 Product: 11-52-0 MAP

Order Id: 863132
 Order Task Id: 24126075
 Crop - Year 1: Hemp
 Crop Purpose - Year 1: Milling
 Yield Goal - Year 1: 3000
 Task: Midwest Labs - P Rec

Field Boundary	
P Bray 1 Surface ppm	
Very Low 0 - 5 ppm (0.1 ac) (2.5%)	
Low 5 - 12 ppm (0.6 ac) (27.3%)	
Medium 12 - 22 ppm (0.3 ac) (14.0%)	
Optimum 22 - 27 ppm (0.2 ac) (9.0%)	
High 27 - 35 ppm (0.3 ac) (13.8%)	
Excess > 35 ppm (0.7 ac) (32.8%)	

Field Boundary	
P Product Recommendation lb/ac	
40 (0.3 ac) (12.4%)	
50 (0.3 ac) (13.6%)	
60 (0.1 ac) (4.7%)	
80 - 90 (0.1 ac) (2.8%)	
100 - 110 (0.2 ac) (7.4%)	
130 (0.2 ac) (9.9%)	
170 - 180 (0.1 ac) (3.7%)	
240 (0.0 ac) (0.7%)	

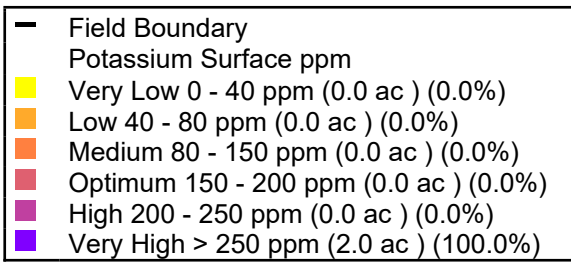
Potassium Surface (2021)



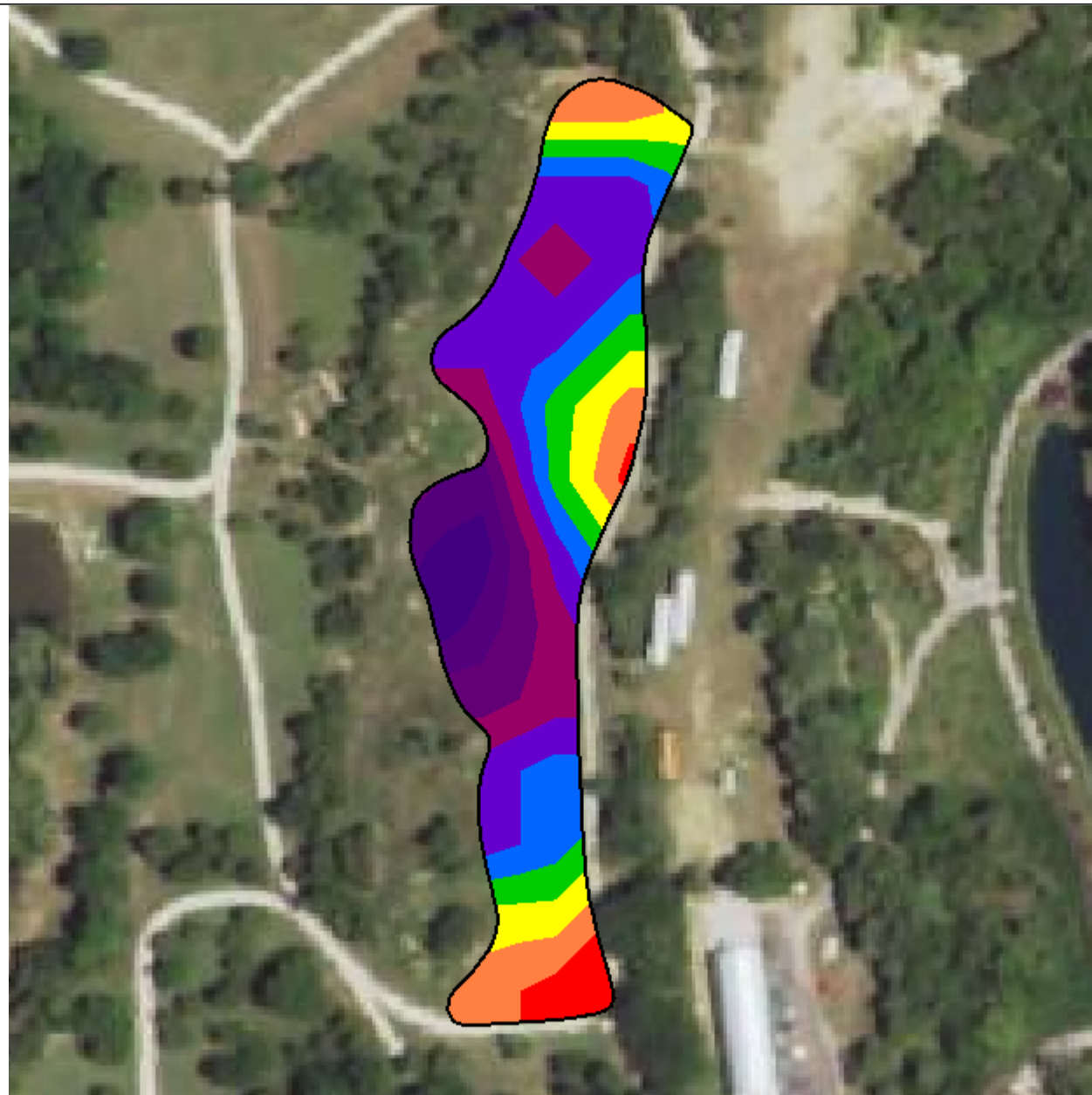
K Product Recommendation

Grower: Troy Palmer
 Farm: Troy Palmer
 Field: Research Area 1
 Area: 2.05 ac

Event Date(s): 3/29/2021
 Season: 2021
 Min: 281.90 ppm
 Avg: 368.00 ppm
 Max: 454.19 ppm



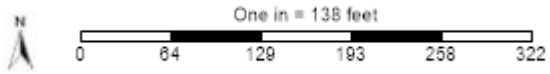
N Product Recommendation



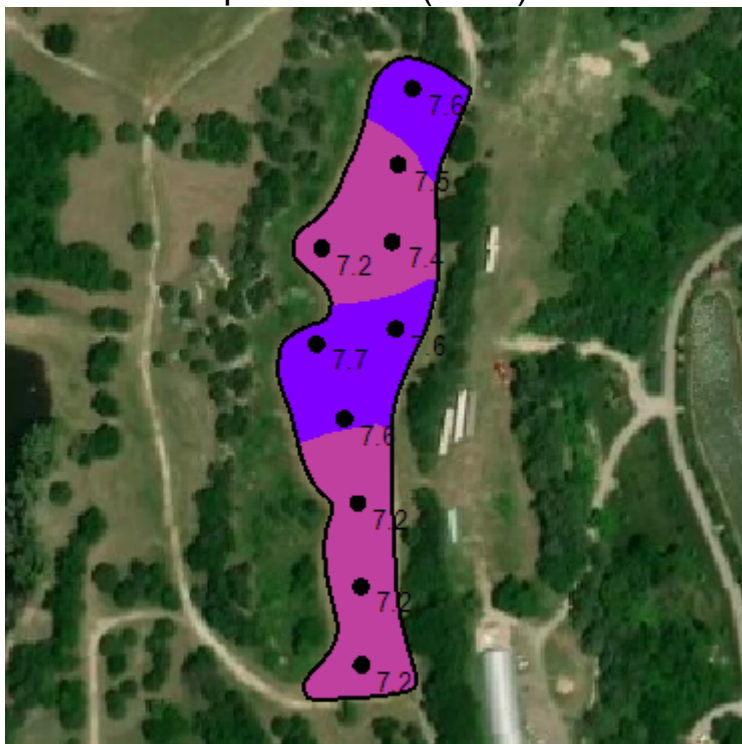
Grower: Troy Palmer
 Farm: Troy Palmer
 Field: Research Area 1
 Area: 2.05 ac

Season: 2021
 Min Rate: 180.00 lb/ac
 Avg Rate: 224.18 lb/ac
 Max Rate: 270.00 lb/ac
 Total Product: 459.22 lb
 Applied Area: 2.05 ac
 Product: 46-0-0 Urea
 Credit: 11-52-0 MAP - 11-52-0 MAP
 Order Id: 863132
 Order Task Id: 24126074
 Crop - Year 1: Hemp
 Crop Purpose - Year 1: Milling
 Yield Goal - Year 1: 3000
 Previous Crop: None
 N Zone: 6
 Task: Midwest Labs - N Rec

Field Boundary	
N Product Recommendation lb/ac	
180	(0.1 ac) (6.4%)
190	(0.2 ac) (11.2%)
200	(0.1 ac) (6.3%)
210	(0.2 ac) (11.4%)
220	(0.1 ac) (6.9%)
230	(0.5 ac) (26.7%)
240	(0.3 ac) (13.5%)
250 - 270	(0.4 ac) (17.6%)



pH Surface (2021)



Grower: Troy Palmer
 Farm: Troy Palmer
 Field: Research Area 1
 Area: 2.05 ac

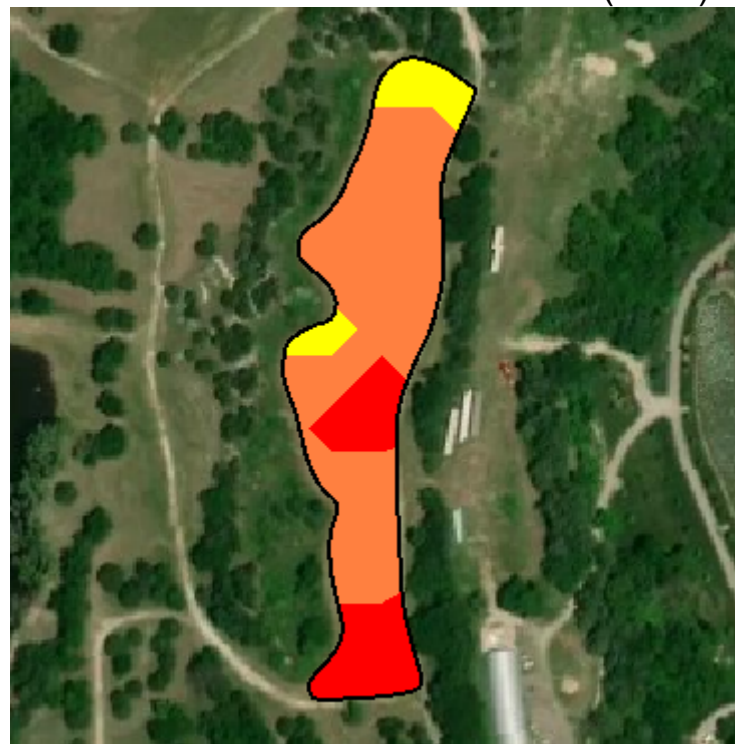
Event Date(s): 3/29/2021
 Season: 2021
 Min: 7.20
 Avg: 7.42
 Max: 7.65

—	Field Boundary
	pH Surface
■	Excessive Acid 0 - 5 pH (0.0 ac) (0.0%)
■	Acidic 5.1 - 5.5 pH (0.0 ac) (0.0%)
■	Slightly Acidic 5.5 - 6.1 pH (0.0 ac) (0.0%)
■	Grain Optimum 6.1 - 6.6 pH (0.0 ac) (0.0%)
■	Alfalfa Optimum 6.6 - 7.5 pH (1.3 ac) (65.3%)
■	Alkaline > 7.5 pH (0.7 ac) (34.7%)

Sulfur - ppm (2021)



Sulfur Product Recommendation (2021)



Grower: Troy Palmer
 Farm: Troy Palmer
 Field: Research Area 1
 Area: 2.05 ac

Event Date(s): 3/29/2021
 Season: 2021
 Min: 3.08 ppm
 Avg: 4.69 ppm
 Max: 6.88 ppm

Season: 2021
 Min Rate: 11.00 lb/ac
 Avg Rate: 11.86 lb/ac
 Max Rate: 13.00 lb/ac
 Total Product: 24.30 lb
 Applied Area: 2.05 ac
 Product: Sulfur

Order Id: 863132
 Order Task Id: 24126073
 Crop - Year 1: Hemp
 Crop Purpose - Year 1: Milling
 Yield Goal - Year 1: 3000
 Task: MV Heartland - MV Adj Midwest Sulfur

— Field Boundary

Sulfur Surface ppm

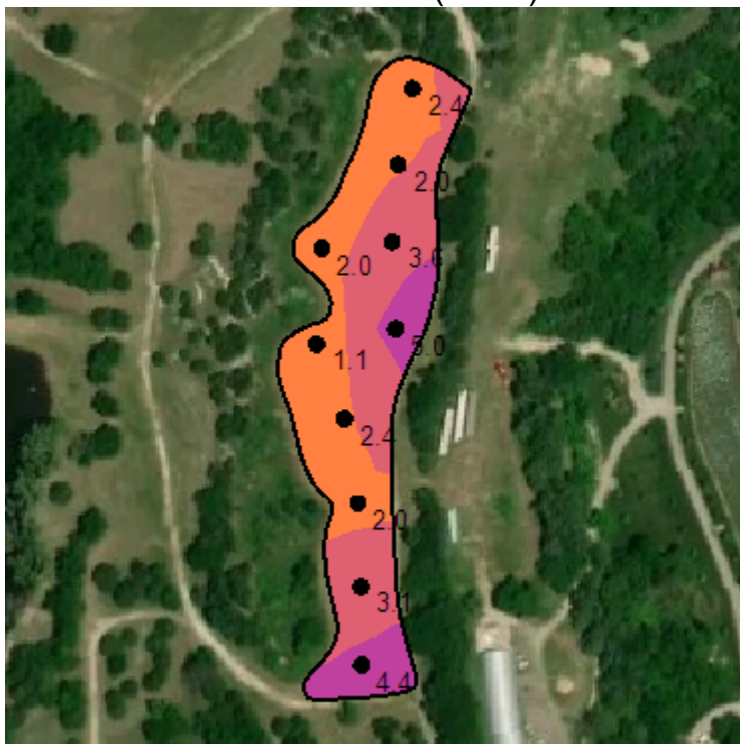
- Very Low 0 - 5 ppm (1.4 ac) (69.8%)
- Low 5 - 10 ppm (0.6 ac) (30.2%)
- Medium 10 - 15 ppm (0.0 ac) (0.0%)
- Optimum 15 - 20 ppm (0.0 ac) (0.0%)
- High 20 - 25 ppm (0.0 ac) (0.0%)
- Very High > 25 ppm (0.0 ac) (0.0%)

— Field Boundary

Sulfur Product Recommendation lb/ac

- 11 (0.5 ac) (24.1%)
- 12 (1.3 ac) (65.7%)
- 13 (0.2 ac) (10.2%)

Zinc Surface (2021)



Zinc Product Recommendation (2021)



Grower: Troy Palmer
 Farm: Troy Palmer
 Field: Research Area 1
 Area: 2.05 ac

Event Date(s): 3/29/2021
 Season: 2021
 Min: 1.06 ppm
 Avg: 2.82 ppm
 Max: 4.98 ppm

Season: 2021
 Min Rate: 3.00 lb/ac
 Avg Rate: 3.05 lb/ac
 Max Rate: 5.00 lb/ac
 Total Product: 1.54 lb
 Applied Area: 0.50 ac
 Product: Zinc Sulfate

Order Id: 863132
 Order Task Id: 24126077
 Crop - Year 1: Hemp
 Crop Purpose - Year 1: Milling
 Yield Goal - Year 1: 3000
 Task: Midwest Labs - Zn Rec

—	Field Boundary
	Zinc Surface ppm
■	Very Low 0 - 0.5 ppm (0.0 ac) (0.0%)
■	Low 0.5 - 1.0 ppm (0.0 ac) (0.0%)
■	Medium 1.0 - 2.5 ppm (1.0 ac) (47.0%)
■	Optimum 2.5 - 4.0 ppm (0.8 ac) (40.5%)
■	High 4.0 - 6.0 ppm (0.3 ac) (12.6%)
■	Very High > 6.0 ppm (0.0 ac) (0.0%)

—	Field Boundary
	Zinc Product Recommendation lb/ac
■	3 (0.5 ac) (24.0%)
■	5 (0.0 ac) (0.7%)

Product Summary

Season: 2021
 Grower: Troy Palmer
 Farm: Troy Palmer
 Field: Research Area 1
 Area: 2.05 ac

Nitrogen

Recommendation	Rec Acres	Avg Rec Rate	App Acres	Avg App Rate	Total Product
46-0-0 Urea 863132 24126074 4/2/2021 2:04:34 PM(local) Hemp Milling 3000 None 6	2.0	224.2 lb/ac	2.0	224.2 lb/ac	459.2 lb

P205

Recommendation	Rec Acres	Avg Rec Rate	App Acres	Avg App Rate	Total Product
11-52-0 MAP 863132 24126075 4/2/2021 2:04:34 PM(local) Hemp Milling 3000	2.0	45.6 lb/ac	1.1	82.7 lb/ac	93.4 lb

Sulfur

Recommendation	Rec Acres	Avg Rec Rate	App Acres	Avg App Rate	Total Product
Sulfur 863132 24126073 4/2/2021 2:04:34 PM(local) Hemp Milling 3000	2.0	11.9 lb/ac	2.0	11.9 lb/ac	24.3 lb

Zinc

Recommendation	Rec Acres	Avg Rec Rate	App Acres	Avg App Rate	Total Product
Zinc Sulfate 863132 24126077 4/2/2021 2:04:34 PM(local) Hemp Milling 3000	2.0	0.8 lb/ac	0.5	3.1 lb/ac	1.5 lb