



The Buzz

Newsletter of the Iowa Honey Producers Association

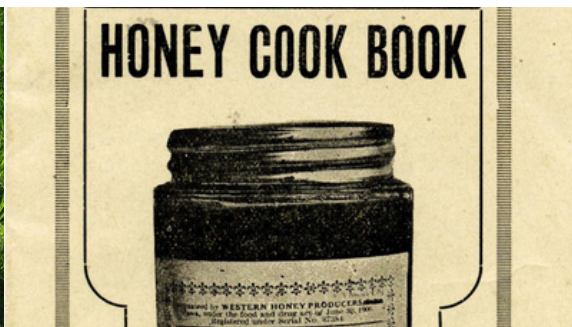
<https://www.iowahoneyproducers.org/>

June July Aug 2021

Inside the Issue



<https://eberthoney.com/>



2021 Summer Field Day

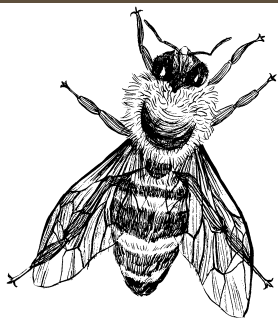
Plan on attending the 2021 Summer Field Day on July 10th! See more details on Page 12, register on Page 21

Remnants from the Past

Check out a list of past presidents of the IHPA & other interesting information on Page 19

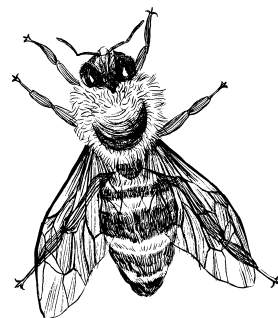
The Iowa State Fair & the IHPA

Get all of the details about how you can volunteer for the IHPA at the Iowa State Fair & class entries on Pages 6-10



Mark your Calendars!

& Bee Happy!



July	August	November
10 Summer Field Day	12-22 Iowa State Fair	12-13 IHPA Annual Meeting

IHPA OFFICER & DIRECTOR NEWS



PRESIDENT'S REPORT

Roy Kraft

IHPA members,

Well it's finally beginning to be later spring, some days it's summertime—beekeeping time! Yes, I'm into this spring thing very much and I've cranked it up a bit. I will explain more in a bit.

I believe the IHPA board and members are really excited about this year as a lot of great things will happen. It will start when our Field Day happens, and that will soon be here. Get signed up and join us for a day of great things with the bees in the field. It seems Field Day is the perfect time to get all those last-minute questions answered or just meet some great new and old IHPA members. **GET SIGNED UP NOW!** You might just as well book your time to help us at the Iowa State Fair too. Remember, we buy your way in. Just get ahold of Heidi and book the time you want before time slots get full. The signup form is in the Buzz. This fair will be huge since people are ready to do something fun, including me! Can't wait for the fair this year! I may even bring some entries and show this year.

I am doing an experiment in bees this year. I've wanted to do this for a while. I want to set up a hive made up of all medium frames. Three mediums are equal to two deeps, so I've wondered and talked to a lot of people about this and I know there are some beekeepers out there doing this. For me this experiment was a total spur of the moment decision, and I was lucky to find a package still available, so I'm doing it! I will call it "Medium One". (Biden can have Air Force One; this president can have Medium One). This is a good story already, since my luck with packages and beekeeping this spring is most interesting. So I set up Medium One, and the bees decided to kill their queen first thing. I was lucky enough to be getting three other queens (my favorite comb-building, comb honey specialist queens). So... I set in a new queen and I believe I have Medium One going well, judging by the way she is laying and the pollen is coming in. Now for the other two queens. I decide to split my two overwintered hives since they are full of capped brood. I pulled five frames from each. The frames were very heavy with bees and barely fit in a nuc box. Guess what, I scanned them close and had both queens in the nuc boxes. Now both my hives have been queenless for a week as this was done on a Sunday night. I had put the queens in, and one queen was smothered and one was still alive and I was able to rescue her and put her in another nuc. She is doing fine now. I go back to my other two big hives and what a huge mess. Supersedure cells all over! I get a lot of nuc boxes and I think eight boxes later, I'm done. I'm not a huge fan of these kind of queens but the cells are big, and we will see if they get mated and actually make it or not. A lot can happen before a good super of honey is made.

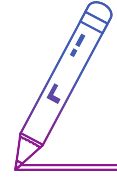
Medium One is what is more interesting to me. This concept has had me wondering and I will satisfy my interest by doing a hive this way. It will be a fun year as I will be talking a lot about this hive, pros and cons. I already like the easy handling of a medium frame vs a deep. Finding the queen is easier. The weight factor is a plus too. A medium weighs in at 60 pounds max and a deep weighs as much as 80. Again, I really like moving the medium frame vs deep already. This is all new equipment. The package went on foundation. The only issue I have so far is I wish I had a taller stand for it. This could and may get fixed. I just work on my knees right now. Those of you who are older know that working on one's knees is not such a good thing. So Medium One has been launched. More to come in months ahead. Any comments, call me at 515 293-2458. I'm ready for beekeeping in 2021!

Good night! -Roy Kraft, IHPA President

IHPA OFFICER & DIRECTOR NEWS

SECRETARY 'S REPORT

Heidi Love



Hello fellow beekeepers:

I am so excited for the planning of the 2021 Iowa State Fair. One of my biggest heartbreaks in 2020 was the cancellation of the State Fair. This year I have some exciting news and additions to our booth. First off, we will be having two honey lemonade making stations. During the “Taste of the Fair” experience, we tried the chug-a-lugs. What an amazing hit they were! We need to have a specific making station just for that, and always we will be selling glasses of ice cold lemonade for \$3 a glass. Secondly, our shifts will still remain 9:00am-1:30pm, 1:30pm-6:00pm, and 6:00pm-9:00pm. We are still working our details how many volunteers we will need for each shift. The Agriculture Buildings hours have changed. Opening at 9:00am, but closing at 8:00pm. We are still leaving the last shift until 9:00pm. This will give us time to clean and prepare many chug-a-lugs ready for the next day.

I am so excited for the 2021 State Fair. Again, we will need you for volunteering to make this a successful year. I can’t wait to see you all! I know it is early to start thinking about the fair but, like always, it will be here before we know it. Please remain safe and healthy! Can’t wait to hear from you. -Heidi



STATE APIARIST REPORT

Andy Joseph

EXCITING EVENT NOTICE!!

*An Evening with our Apiary Judge, Ginny Mitchell
May 29th at 6:30 p.m.*

Learn what the Judge is Looking For! Tips & Tricks for Preparing Perfect Apiary Entries

Ginny is a knowledgeable beekeeper, entomologist, and lover of all-things-BEE. She coordinates the ISU Insect Zoo, sharing her knowledge of insects to people of all ages, all over the state. We’ve been very lucky to have Ginny as our State Fair Apiary Contests Judge for several years now. This is a big job, and one that requires her unique skill set and her passion for poring over the details of each of every exhibit.

If you’ve ever wondered what in the world the judge looks for in an observation hive, how to get that Blue Ribbon for your honey, beeswax art, or a photo class, or if you’ve ever had an idea for assembling one of those awesome window display cases, but didn’t know how to start... This is your chance!

Ginny has created a presentation itemizing how she judges each class of entry. She’ll share lots of insight on just how to create perfect exhibits. This will be interesting and educational for all! Additionally, IHPA President and dedicated fair exhibitor, Roy Kraft, will speak about volunteering in the IHPA Honey booth - which is always a great time. I will briefly discuss the “superintendency” nuts & bolts of obtaining your entry tags, delivering your exhibits just prior to the fair, earning points, ribbons and awards, and I’ll attempt to answer any other questions you may have.

See more details, and Zoom link on Page 10



Emma Jakes' Recipes

Spring just seemed to keep going this year! Summer kept teasing us and then disappearing for a while! Now that it is almost June, the bees are buzzing, and spring swarms have already been caught! It's time to sit back, relax, and keep track of those Supers! If your family is anything like mine, summer is never dull. Between picnics, fairs, sports, gardens, and everything in between, it really is a busy time of year. Next time you need a ready-made snack for the ball game or something sweet to take to that picnic, try these delicious honey bars or cherry chocolate chip brownies from the Iowa Honey Producers cookbook!

Honey Oatmeal Bars (Pg. 76):

½ cup butter	½ teaspoon baking soda
½ cup honey	½ teaspoon baking powder
1/3 cup sugar	¼ teaspoon salt
1 egg	1 cup quick cooking rolled oats
1 teaspoon vanilla extract	1 ½ cup flaked coconut
¾ cup white flour	½ cup chopped almonds

Cream butter, honey, and sugar until light and fluffy. Add egg and vanilla, beat well. Sift flour, baking soda, baking powder, and salt. Add to creamed mixture. Stir in rolled oats, coconut, and almonds. Spread in greased 9" x 13" pan. Bake at 350 for 25-30 minutes. When cool, sprinkle on confectioner's sugar and cut into bars. Makes about 40 1x2 inch bars.

Emma's Notes: The bars were delicious! They had a caramelly consistency and flavor that meshed well with both the coconut and the almond. The bars were not as sweet as I was expecting which made the coconut and almond flavors more noticeable. I cooked the bars for about 30 minutes which made them a little softer. I included the powdered sugar dusting when my family taste tested them, but I will probably not include it next time I make them. It wasn't necessary to increase the flavor or prettiness of the bars. The recipe was fast and easy to whip up and I will definitely be making these bars again!

Honey Cherry Chocolate Oatmeal Cookies (Pg. 72)

2 sticks (1 cup) Unsalted butter, room temperature	2 eggs
1 1/8 cup honey	1 ½ cups all-purpose flour
1 teaspoon vanilla extract	1 teaspoon salt
2 ½ cup regular oatmeal	1 cup dried cherries, chopped
¾ cup miniature semi-sweet chocolate chips	¾ cup milk chocolate chunks

Preheat oven to 350 degrees. Cream butter for 30 seconds, until smooth. Add honey. Beat 2 minutes until fluffy and smooth. Add eggs and vanilla, beat until well combines. Sift flour, baking soda, and salt together. Slowly add dry ingredients to wet, mixing only until combines. Add oatmeal, chocolate chips and dried cherries. Mix until combined. Scoop mixture with ¼ cup cookie scoop. Press dough balls slightly to flatten tops. Bake until golden around edges and set in the middle. Remove from oven and let cool 5 minutes. Makes 18 large cookies.

Emma's Notes: These cookies were very soft, although a little crumbly. The recipe does call for making a total of 18 large cookies, but I was sharing the cookies and hoping to freeze a few so I made them a little bit smaller. The recipe did not specify a time, so I baked them for 9 minutes. If you make the cookies larger, it will probably take closer to 12 minutes, until the centers are mostly firm. The cookies were sweet but not overbearingly sugary. One issue I had was that I accidentally melted my butter and that caused the cookies to be a little runnier than normal. The oatmeal absorbed most of the extra moisture, so the liquid butter did not affect the cookies. Additionally, if you only have semi-sweet chocolate chips, only using one type of chocolate will also work fine. Overall, my family loved these cookies and, unfortunately, none of them made it to the freezer.

Legislative News

Lobbyist: Jamie Beyer

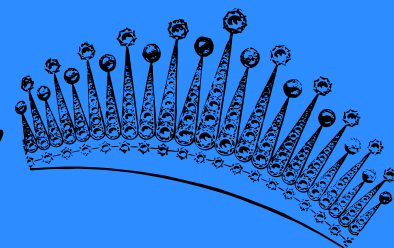
The legislative session is about over as I write this report. Only a week or two left at the most. There was not a lot of legislation that I worked on due to the pandemic. I did not visit the Capital at all this year due to the restrictions. However, our Lobbyist Jim Obradovich and the Capital Group were following several pieces of Legislation that affect beekeepers. Their reports to me allowed me to stay informed and active. As a side note, due to the reduced IHPA income flow this year -- Jim O waved most of his normal charges to lobby for us. I am going to deliver several bottles of my honey to him as well as a \$250 check from IHPA for his services. The Capital Group normal charges are in the \$10,000 range.

There are several bills that affect beekeepers that are waiting the Governor's signature. The one that stands out the most and the one could impact local honey sales is the following;

SF 578 - Included in the bill is a "farm-to-table" task force. The purpose of the task force is to recommend how institutional purchasers, including schools, may be provided with long-term practical options to routinely acquire fresh food derived from locally or regionally produced and processed farm commodities, including meat, poultry, fish, and dairy products; eggs; vegetables; fruits; nuts; and honey. The task force is to complete its work no later than December 10, 2021. The bill also continues the Local Farm Produce program that helps schools purchase locally grown foods for use in school lunches. Passed the Senate 48-0. Amended and approved by the House 94-0. Amended and approved by the Senate 48-0. Amended and Approved by the Senate 48-0. Awaiting the Governors signature.

Royal Proclamation

Abigail Kelly - 2021 Iowa Honey Queen

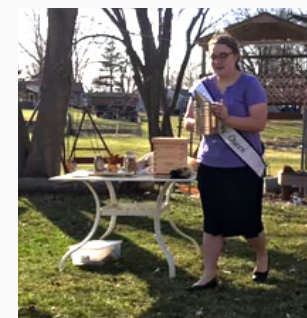


Happy summer! I am thrilled to be able to get back in my hives! Even though it is barely May, we have already had to make splits and put on supers!

My final January program was on January 21st. It was a virtual program with the Poweshiek County 4-Hers. I shared about honey bees as pollinators. On February 20th, I taught a session as part of a virtual beekeeping seminar. My session was for non-beekeepers or beginning beekeepers and was entitled "So You Want to Be a Beekeeper?" All my session attendees seemed to enjoy the session and were excited to look into getting bees. On March 21st, I spoke to the Polk County Minivators about honey bees. The Minivators is a Clover Kids 4-H club. Because the meeting was held at my family's home, I was able to take the Clover Kids to look at the outside of a beehive. I spoke to the Valley Pacers 4-H club on April 11. I shared about the importance of honey bees and how anyone can help honey bees. I encouraged the 4-Hers to enter projects into the entomology category at the Polk County Fair. I also shared about the IHPA Youth Scholarship Program. I have a feeling that some of those 4-Hers would be awesome beekeepers! On April 15, I spoke to an after-school program at Perry Elementary School about honey bees. I had just picked up a package from Spring Valley Honey so the kids were able to see the real bees. The kids were excited to see the bees after they were told they could not get out. On April 17th, I had a table at the ISU Block and Bridle Animal Learning Day. I handed out many honey sticks and brochures. I shared how honey was made with many of the attendees. I filmed short video clips about honey bees and of me inspecting a hive for the Waukee Public Library. They will be making a virtual program out of the clips. Be sure to check the Iowa Honey Queen Program Facebook page for a link to the program.

I have many programs scheduled for this summer. I am always looking to schedule more.

If you would like to have me give an in-person or virtual program, please reach out to: Connie Bronnenburg, the IHPA Queen Program's Chair, (515)-480-6076 (cell), or cbronny823@aol.com



2021 Iowa State Fair Bid Sheet

HONEY - SOLE CLASS					CERTIFIED KITCHEN - SOLE CLASS				
		Amt Sold in 2019	PRICE	I want this class		Creamed Honey - 1 pound	Amt Sold in 2019	PRICE	I want this class
					0.01	Almond	73	\$6.05	
1	24 ounce bear	165	\$6.33		0.02	Apple Cinnamon	120	\$6.05	
2	3 pound jug	28	\$11.55		0.03	Bacon	0	\$6.05	
4	2 pound jug	65	\$9.35		0.04	Bavarian Crème	245	\$6.05	
5	5 pound jug	42	\$17.60		0.05	Black Walnut	68	\$6.05	
6	2 ounce bear	558	\$1.38		0.06	Blackberry	110	\$6.05	
7	16 ounce Antique (Muth) jar	67	\$7.15		0.07	Blueberry	77	\$6.05	
8	8 ounce Antique (Muth) jar	36	\$4.68		0.08	Cinnamon	264	\$6.05	
9	4 ounce Antique (Muth) jar	36	\$3.30		0.09	Jalapeno	86	\$6.05	
10	Buckwheat Honey 1 pound	102	\$6.60		0.10	Lemon	104	\$6.05	
11	12 pound gallon jug	22	\$38.50		0.11	Mango Habanero	81	\$6.05	
12	Honey Stix-For the year 2022	30186	\$0.10		0.12	Mango Tangerine		\$6.05	
HONEY - CASE LOT - 24 PER CASE					0.13	Pecan	74	\$6.05	
		Amt Sold in 2019	PRICE	Limit 4 cases per class					
71	1 pound glass (liquid honey)	148	\$5.78		0.14	Pecan Cinnamon	70	\$6.05	
72	1 pound plastic (light honey)	209	\$5.50		0.15	Pure	443	\$6.05	
73	12 oz honey bear (light honey)	234	\$4.40		0.16	Raspberry	160	\$6.05	
74	8 oz honey bear (light honey)		\$3.30		0.17	Raspberry Jalapeño	128	\$6.05	
					0.18	Strawberry	128	\$6.05	
CLEAN-UP					Additional Flavors:				
77	8 oz honey bear					Apricot	41		
78	1 pound glass					Butter Vanilla	58		
79	1 pound plastic					Chai	34		
80	12 ounce honey bear					Maple Bacon	72		
SPECIALITY ITEMS					BEESWAX PRODUCTS - OPEN CLASS				
							Amt Sold in 2019	PRICE	I want this class
75	Comb Honey (Clamshells & Boxes)	717	\$6.60		16	Beeswax Bar - 1 ounce	60	\$2.00	
76	Ross Rounds		\$4.95		17	Beeswax Bar - 1/2 pound	22	\$4.00	
81	Chunk Honey - 12 oz	179	\$6.05		18	Beeswax Bar - 1 pound	75	\$7.00	
69	Bee Pollen (1/2 pound)		\$4.95		51	Wooden Honey Dippers	66	\$1.75	
70	Bee Pollen (1 pound)		\$6.60		52	11 piece nativity set		\$27.50	
					53	Corn cob candle	18	\$5.50	
					54	12" pair dinner candles		\$6.00	
					55	8" pair dinner candles	14	\$5.00	
82	Honey for Lemonade - 50 pound pails	2368.4			56	Small skep w/bear candle	28	\$3.00	
	(Estimated 2800 pounds for 2021)				57	Tea lights (12 pack) candle	19	\$6.00	
CERTIFIED KITCHEN - SOLE CLASS					58	Round Pillar Bee		\$5.50	
13.00	Flavored Honey- 6oz	Amt Sold in 2019	PRICE	I want this class					
13.01	Almond	0	\$3.85		59	Pillar 6" rolled look candle	13	\$5.50	
13.02	Apple Cinnamon	64	\$3.85		60	Square Bee Candle		\$4.00	
13.03	Apricot	0	\$3.85		61	Votive (4 pack) candle	12	\$5.00	
13.04	Black Cherry	70	\$3.85		62	Turkey candle		\$4.50	
13.05	Blackberry	69	\$3.85		63	Light house candle	8	\$4.00	
13.06	Blueberry	70	\$3.85		64	Med skep candle	8	\$4.00	
13.07	Butter Rum	74	\$3.85		65	Large skep candle		\$6.00	
13.08	Butterscotch	0	\$3.85		66	Pillar 10" rolled look candle		\$7.00	
13.09	Carmel Apple	48	\$3.85		67	Hand dipped pair candles		\$7.00	
13.10	Cherry	12	\$3.85		68	Fire Starter /5 pk	26	\$1.50	
13.11	Chocolate Mint	0	\$3.85						
13.12	Cinnamon	48	\$3.85						
13.13	CranRaspberry	77	\$3.85		Additional Design/Styles:				
13.14	Jalapeno	63	\$3.85			Candles:			
13.15	Lemon	67	\$3.85			Apple	7		
13.16	Orange	32	\$3.85			Christmas Tree	5		
13.17	Peach	89	\$3.85			Decorative Tree	6		
13.18	Peach-Mango	0	\$3.85			Fairy Ball	1		
13.19	Pralines & Cream	0	\$3.85			Morel Mushroom	41		
13.20	Raspberry	79	\$3.85			Owl	33		
13.21	Strawberry	76	\$3.85			Rose Pillar	5		
Additional Flavors:						Turtle	36		
	Chai	21			LOTIONS/SOAPS/LIP BALM/ETC				
	Chai & Butter Vanilla	33							
	Habnero	51							

RULES FOR 2021 STATE FAIR PRODUCTS BEING SOLD AT THE IHPA BOOTH

1. There will be a four person committee including the booth manager
2. Applications must be sent by email to all four committee members:
 - i. Kris Silvers kristin.silvers@gmail.com
 - ii. Ed St. John esj178@gmail.com
 - iii. Heidi Love bhlove5@aol.com
 - iv. Doyle Kincy dwkincy@msn.com **and** paper applications must be sent to Doyle Kincy at 7304 Monroe Ct. Urbandale, IA 50322
3. All liquid and comb honey is to be from 2021 harvest (except honey for lemonade)
4. All glass honey and creamed honey containers must have a protection seal
5. All plastic honey containers must have a pressure seal (this includes all large containers)
6. All products must show proper labeling (supplier, name, city, phone #)
7. Honey for the "Honey Lemonade" (50#) will be a sealed bid only. Low bid takes all
8. Pollen must have a "US Pollen" label
9. **ALL CONTAINERS NEED TO BE CLEAN, NON STICKY; AND ARE SUBJECT TO REJECTION BY BOOTH MANAGER**
10. **Due to the time frame of honey styx production, it will be a one year commitment starting 2022**
11. **FIRM Cutoff Date: June 1, 2021 (must be postmarked by this date)**
12. Any item **not listed** on the application sheet, or any specialty items, you wish to market at the IHPA State Fair Booth needs to be approved by the booth manager, by the committee deadline 6/1/21
13. The committee will meet on 6/19/2021. Place TBD. General IHPA members will be allowed to witness. Check Facebook and website for location
14. One application/household. Must be current IHPA Member

Sole Classes

1. There will be one person that will have a sole class of honey or item based on price list
For example: one person will have ALL 24 oz. bears for the state fair based on price list. If two or more producers apply for that item, it will be decided by a draw, winner will take the whole class
2. You will only be allowed to win every other draw, however, if you are the only one that entered that class you will get the class and be eligible for the next draw
3. Draw order is per list on application sheet
4. If you win any sole class you ARE NOT eligible for case lots, however, if you are not chosen in the draw for any of the sole class, you will be eligible for case lots but you must have it on your application sheet if you are wanting to supply those

Open Classes

1. All beeswax products (candles, ornaments, blocks, soaps, lotions, lip balms, etc.) must be packaged to maintain cleanliness and for presentation (this will be the booth managers discretion)
2. Please submit a list of what you would like to market at the 2021 IA State Fair. Please provide a phone number where you may be reached if committee has questions
3. You are only allowed to supply a maximum of four scents of each product

Creamed and Flavored Honey Rules (MUST BE IOWA HONEY)

1. Flavored and creamed honey must come from a certified kitchen
2. A copy of the license must be on file with the booth manager, and booth manager must have them with them at the state fair **(License must be attached or mailed with application package)**
3. If more than one person is wanting to bring a flavor, a draw will decide who brings the flavor
4. You are required to provide a 1 oz sample, by committee deadline, if you wish to bring pure creamed honey (Sample to Doyle Kincy by noon on 6/19/21)

Case Lots

The purpose of the case lots is a way for the small beekeeper to provide honey to the fair

1. Case lot classes are 1 lb. glass, 1 lb. plastic and the 12 oz. bear
2. Case lots will be in case quantities of 24 bottles; **minimum is one case of 24/class**
3. If you do not win any of the "Sole Class" categories then you will be eligible for case lot (This must be marked on your application to be considered)
4. **Clean up rule:** in the event the required quantity cannot be fulfilled through the case lot system, those participating in the "Sole Class" will be encouraged to help supply the additional quantity needed of each class through a draw. (One person/class decided by draw, if needed) These items will not be placed out until after Day 5
5. You may bring no more than four cases of each class

Cut Comb, Ross Rounds, and Chunk Honey

1. Must be in a sealed container
2. Must be well-drained without liquid honey (chunk honey excluded)
3. Quality standards will be used (clean capped with all the cell capped)
4. Needs to weigh at least 14 oz. (chunk honey excluded)
5. MUST be frozen for a minimum of 48 hours prior to arriving at the IA State Fair, subject to rejection at booth manager's discretion (**this includes chunk honey**)

Delivery of Products

1. All products must be delivered to IHPA booth at the Iowa State Fair
2. Product must be delivered between Sunday to Wednesday (unless other arrangements are made with the booth manager)
 - i. Sunday Noon–6:00 p.m.
 - ii. Monday–Wednesday 10:00 a.m.–6:00 p.m.
3. You MUST provide an invoice when product is delivered
4. You MUST complete a W-9 (provided on-site)
5. Please make plans to pick up unsold product on Sunday evening 8:00 p.m.–10:00 p.m. or Monday between 8:00 a.m.–Noon (unless other arrangements are made with the booth manager)

WE NEED YOU!

Plan to volunteer at the Iowa Honey Producers Association Booth for the Iowa State Fair August 12-22, 2021

We have an annual booth at the Iowa State Fair on the second floor of the Ag Building. We sell honey products, honey lemonade, lotions, soaps, beeswax items, promotional merchandise, etc.

We will still continue to schedule volunteers for candle rolling for the Queen Program this year. This is our main fund-raising event, which is needed to help support our various educational programs.

We ask our members to help make this event a success, by volunteering their time—assisting with cash register sales, bagging product, pricing, mixing and serving honey lemonade, candle rolling, and offering honey samples, etc.

Each volunteer will be provided with **free honey lemonade** if you get thirsty while working at the booth, and a **FREE pass to get into the fair!**

(PLUS you get to enjoy the great entertainment at the fair before/after your shift at the booth.)

We had a successful 2019 thanks to all those who participated! Over the years we have had wonderful people volunteer their time and would love to see you again. We encourage new members, friends, families and bee clubs to participate in this event too, because we need everyone's support to make this event a success.

We have three shifts daily, 9:00 am-1:30 pm, 1:30 pm-6:00 pm and 6:00pm-9:00 pm (15-18 people needed per shift). If you are able to volunteer for one or more shifts during August 12-22, we would like to hear from you!

All you need to do is mail the completed form on Page 23, or email the same details to bhlove5@aol.com, or call/text Heidi Love at (515) 729-1761.

If you have any questions, please do not hesitate to ask.

We've added FOUR new classes of competition to our Apiary exhibits at the Iowa State Fair This means there are now 28 ways to enter and compete! Something for everyone, no excuses!

Below are descriptions of the new classes. You can find the full details for all classes by googling "Iowa State Fair Apiary Premium Book." It should be the first thing to come up. (I would include the direct link here, but I'm still seeing last year's book and I expect the link will change as the fair updates for 2021.) I would love to have the shelves bursting with exhibits this year. If you've never taken part, let this year be the year. If you have any questions about getting started with showing at the fair, just ask. Feel free to call or text (515) 326-5765, or email me at Andrew.Joseph@iowaagriculture.gov

The Best Honey in Iowa!

Submit one small (2 oz - 8oz) jar of your best liquid honey extracted as part of this year's crop (2021). **The jar must be "blacked out"** to hide the appearance, color and clarity of the honey. This may be done with black paint or black tape applied to the outside of the jar. The jar may bear no individual labeling in order to maintain the exhibitor's anonymity.

ONLY 1st Place Blue Ribbon will be awarded.

Score Card:

Taste; The Best Honey as perceived by our Iowa State Fair Apiary Judge: 100 pts.

TOTAL: 100.

Youth Class- Three 12 oz. Plastic Bears

Score Card:

Container: free from defects, 5pts.

Flavor: free from burnt taste, chemical contaminants or other off flavors, 10 pts.

Color of honey, 20 pts.

Moisture content, 20 pts.

Uniform volume of honey in all containers, 15 pts.

Clarity of honey, 15 pts.

Freedom from impurities including foam and granulation, 15.

TOTAL 100.

Youth Class -

One Frame of Honey, sealed, ready for extracting, wrapped in clear plastic wrap

Score Card:

Cleanliness of frame, 5 pts.

Completeness of comb attachment, 10 pts.

Uniform and completely filled honey cells, 25 pts.

Uniformity of color of honey (comb, cappings, honey), 25 pts.

Thickness of comb for ease of uncapping, 10 pts.

Completeness, uniformity and cleanliness of cappings, 25 pts.

TOTAL 100.

Youth Class-

One frame of empty extracting comb wrapped in clear plastic wrap

Score Card:

Cleanliness of frame, 10 pts.

Comb attachment and finish, 25 pts.

Uniformity of cells, 25 pts.

Uncapped finish, 30 pts.

Color of wax, 10 pts.

TOTAL 100.

Please note that these new classes are offered by the Iowa State Fair as "ribbon-only awards", meaning the fair will not be paying the \$\$ awards as in all the other, previously existing, classes. The Fair cited COVID as the reason, but fingers are crossed they'll add the money premiums for these four classes next year. That said, these new classes (as well as a few of the existing classes) will have outside sponsorship! Essentially, bonus prizes for entering and winning.

New Classes - Continued from Page 9

The IHPA has generously pledged a \$100 prize to the winner of the Best Honey in Iowa Class. By summertime, we'll have prizes for all the youth classes as well. There has long been an additional "Herman Bickle" \$25 sponsorship to the winner of the Beeswax Art class. Each year the IHPA offers a \$10 premium for every Observation Hive entry. Additionally, each year the IHPA awards an additional Sweepstakes Prize for the beekeeper who wins the most across all classes of competition.

ENTRY DEADLINE IS JULY 14, so don't delay!

Entries must be submitted online or postmarked on or before July 14. **Unfortunately no late entries will be accepted.** Entries may be made online at www.iowastatefaireentry.org or by mail. As a requirement for entry, each participant shall pay a fee of \$2 per entry. This fee applies in all classes except Limited Class 21 (window displays) which is \$4. The July 14 deadline is for purchasing your entry tags - **It's worth noting** that you do not have to declare which classes of competition you'll be entering! Essentially you have nearly up until Fair time to decide which classes you'll be preparing your entries for. Many people will purchase a handful of entry tags, and then prepare as many entry exhibits as their time and resources allow.

I'm looking forward to a great showing!



zoom

Zoom with Iowa State Fair Apiary Judge, Ginny Mitchell Iowa State Fair Apiary Superintendent, Andy Joseph IHPA President, Roy Kraft

Judge Ginny will present tips and tricks to preparing your ISF Apiary Exhibits. Class by class, she will fill us in on just exactly what the judge looks for, and how to do well with your entries

Saturday, May 29th from 6:30 pm-9:00 pm.

Please log into Zoom by 6:20 p.m.

To join our Zoom Meeting:

<https://us02web.zoom.us/j/87614248250?pwd=QlZpd2ljQ3ppKlhJdVZvUU1taEJOUT09>

Meeting ID: 876 1424 8250

Passcode: Apiary

One tap mobile

+13126266799,,87614248250#,,, *616542# US (Chicago)

+19292056099,,87614248250#,,, *616542# US (New York)

Bee Club Bulletin

What is happening around Iowa?

Bee Plant Phenology Planner

By: Julia McGuire

I was awarded a Farmer Rancher Grant (#FNC21-1289) to produce a monthly field guide-planner for beekeepers. This planner combines phenology and beekeeping, with the goal of improving honey production and native foraging habitat. Beekeepers know beekeeping, but not all beekeepers know phenology (the occurrence of natural phenomena of plant and animal life).

First dandelion bloom is commonly known to kick off split season and I know our beekeepers track other events like this. To make this planner, I would love your help. Would you call or send email to about the events that cue your beekeeping activities or send me dates when you see/anticipate things like goldenrod bloom in your area, etc.? In exchange for this information, you will help the next generation of beekeepers, receive your own copy of the planner (either free or very low cost depending on how many need printed) and have print recognition in the planner and any project presentations that I may give in 2023.

I hope you will join my efforts. You can learn more here:

<http://juliecache.com/bee-plant-phenology-planner/>



A Note from your Event Coordinator

Cheri VanSickle

What a wild year this has been so far. First, we didn't know if we going to have events this year (related to the co-vic restrictions). When we did start to plan our first event, our guest speaker, Michael Palmer, contacted us and said he wouldn't be able to attend our Annual Meeting this year. So back to the drawing board!

That's one good thing about being a beekeeper. We know how to roll with the stings! Our event this year will be new and exciting. The 2021 IHPA Field Day will be held on July 10th, at Ebert Honey Farm at Mount Vernon. Our main speaker will be Dr. Matt O'Neal. Professor of Entomology at ISU. There will be lots of networking and breakout sessions for beekeepers of all ages. A catered lunch will be provided. The IHPA meeting will follow after the event.

The 2021 IHPA Annual Meeting will be held at the West Des Moines Marriott Hotel on November 12th and 13th. I'm excited to announce that our guest speakers will be Bob Bennie and Kamon Reynolds. I have spoken to each of them on the phone and they are very excited about attending our annual meeting. Each of them have exciting topics that they are eager to share with our members. More details about their topics will be shared in the next Buzz issue, along with a meeting registration form.

I hope everyone is having a wonderful spring, and your bees are doing great. I'll see you July 10th. -Cheri

2021 SUMMER FIELD DAY

**EBERT HONEY LLC
MT VERNON, IA
ADAM EBERT**

"KEEP the KNOWLEDGE FLOWING"

July 10, 2021

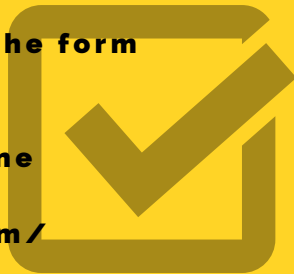
1090 Highway One North
Mount Vernon, IA 52314

8:30 a.m.-4:00 p.m.
Registration 8:00 a.m.

*Hear from Guest Speaker
Dr. Matthew O'Neal
Professor of Entomology at ISU*

**Please Register using the form
found on Page 21**

**NEW! You may pay online
using this link:
<https://ihpa.ecwid.com/>**



Networking for bees of all levels!

*Breakout Sessions
Lunch
Board Meeting*



Hotel accommodations are available at
Sleep Inn & Suites, Mt. Vernon, IA (319) 895-0055
Mention IHPA for a discount

Campgrounds in the area: Palisades State Park & Wanatee Park

SAVE THE DATE

*2021 IHPA Annual
Meeting*

Friday, November 12-Saturday, November 13

West Des Moines Marriott Hotel
1250 Jordan Creek Parkway
West Des Moines, IA
(515) 267-1500
Mention IHPA for a discount

Key Speakers:

**Bob Binnie
Kamon Reynolds**

Friday night banquet,
breakout sessions,
live/silent auctions and
much more!

From the Beeyard

A collection of information from those with direct, personal knowledge about beekeeping

Written by Phil Ebert

Once again, I am finding it hard to pick up the thread after three months. We made our first round of splits in California. There were no queens so we used cells. Success was a mixed bag but it was still worth doing. By the time the doubles came back to Iowa at the beginning of April, they were ready to split again. The spring weather has not been ideal. There have been a few warm days but it has been cool and windy for the most part. I have been surprised at how much pollen has come in. It didn't seem like there was that much flight. We haven't had to use any pollen patties. Adam made up all the nucs in Mt Vernon. They are ready for distribution now (May 10). The load that came back to Pella was made into normal splits. The day after the load came to Alex's place, the temp was in the 80's. The bees came out trying to figure out where they were. They were everywhere. There is one house across the road from him. The residents were not happy with all the bees flying around.

The upside of all this is that we have made our numbers back and have bees to sell. The downside is that we are still struggling with mite control. There is going to be a lot of mite testing as we go through the summer. The treatments are not reliable. We have to know in short order if they didn't work. I would tell you what we are going to do but we have not decided yet. Typically, in late July or early August, there seems to be a big emergence. We have seen mite populations jump from 3% to 10% in two or three weeks. If the mites reach that threshold, it is curtains for the bees.

We used to run our late splits as singles for honey production. We would double them up in the fall. Since we are going for pollination colonies, we will probably let them grow into doubles. It takes a month to fill that 2nd box so the honey crop suffers a bit. We did that last year. Things looked great until the mites took over. Everything is a tradeoff with plus and minuses.

There is a place a few miles to the south of me that grows prairie flowers for seed. He has around 50 acres. I spotted a few colonies down there a few years ago. One of his employees was driving by the bees on a tractor. I don't remember what he was pulling but it stuck out past the tractor quite a way. He plowed into the beehives. I got a call that the bees had gotten knocked over. I was not unduly alarmed. This happens all the time. I go out and set them back up. On this occasion, I found the boxes had been turned into kindling wood. Most of the frames were okay. I don't remember how many queens were lost. I declined an offer to return. Now, after a few years of keeping bees and watching them die, they are willing to pay for pollination. It's cheaper.

Here is to healthy bees and a big honey crop!!



Foley's Russian Bees

Foley's Russian Bees is an Indianola, Iowa based producer of Primorsky Russian bees & beekeeping equipment. We specialize in Russian mated queens and Russian nucleus hives. We also are a provider of Carniolan packages. When you are in need of bees, we can help!

To place an order, check us out on the web
www.RussianBee.com



**HONEY
FOR
SALE**

Barrels or five gallon pails
(your container)

Call Curtis Barnhart
(319) 480-2915

Monticello, IA

Preciousbees



Farm

1828 Y Avenue
Homestead, IA 52236

Preordering bees for 2022 -
Starting November 1
3# package bees

Italian and Carniolan cross

Please contact Paul Gardener
(319) 400-4228

Spring Valley Honey Farms

Perry Iowa

See us for:

Honey:

50# bucket Honey \$132.00 (\$2.50/lb. + \$7.00 for bucket)

We send 55-gallon drums of our honey to Salem, Oregon to be put into styx

Honey Styx:

1-499 \$0.15 ea.

500-1999 \$0.12 ea.

Box of 2000 \$0.09 ea.

Beeswax:

Raw: \$4.50/lb.

Filtered: \$6.50/lb.

Corn Syrup and Protein Patties:

Corn syrup: \$0.40/lb. your container

500+lb. \$0.35/lb.

Candles & Bath and Body Products

We carry a full line of beekeeping equipment!

www.springvalleyhoneyfarms.com

We do not keep regular store hours.

Call Connie @ (515) 480-6076

The Buzz Newsletter Article & Ad Submissions

Until at least August 2021, The Buzz will be quarterly, due to loss of 2020 income from the Iowa State Fair cancellation. We have revised the way we will handle ad sizes and pricings.

You must be an IHPA member to run an ad in The Buzz.

We'll publish monthly prices once we go back to 12 issues

Current Prices

Size	Actual Space	Qtr. yr. Price (\$)	Year Price (\$)
Classified	3 lines, 4" long	15	50
1/8 Page	2" x 4"	75	250
1/4 Page	5" x 4"	150	500
1/2 Page	5" x 8"	220	775
Full Page	8" x 10"	275	1,000

Please send articles, photos and classified ads to
Kelsey Wigans at ihpaeditor@gmail.com

Firm Deadline for submissions is included below:

Newsletter	Due Date for Submissions
Aug. 2021	July 10, 2021
Sept. 2021	Aug. 10, 2021
Oct. 2021	Sept. 10, 2021
Nov. 2021	Oct. 10, 2021
Dec. 2021	Nov. 10, 2021

If you miss the deadline, submissions will be in the next printing of The Buzz. No exceptions.

Ads should be submitted in a Word format, PDF, jpeg, or png designed just as you wish to see them printed.

Don't know what to do for an ad? Don't worry!

Please submit your information, logo, photos, etc. by the **1st of the month** before the issue will be printed, and allow Kelsey to create 1-2 designs for you (for free)!

Article submissions should be 800 words or less.

Need Honey Containers?

Ebert Honey can help!



ABOUT OUR CONTAINER LINE

Ebert Honey offers competitive pricing on a full lineup of professional honey packaging supplies, featuring over 20 container and bottle styles.

Our container line offers high quality products paired with local customer service.

A FEW OF OUR PRODUCTS:

- Oval Front Bears
- Rectangle Front Bears
- Classic Glass Jars
- Hourglass Squeeze Grip
- Jugs & 5-Gallon Buckets
- Spout, Snap Cap & Flat Lids



ABOUT YOUR CONTAINER ORDER

Ebert Honey welcomes container orders of any size. We offer local pick up, as well as convenient shipping to your door. Our streamlined website makes ordering and shipping fast and easy!

Container orders are processed at our Mount Vernon, Iowa, location. Pick up is arranged ahead of time and is available at both our Mount Vernon and Lynnville locations.

We offer shipping via USPS, FedEx, and Speedee Delivery.



CONTACT OUR HONEY EXPERTS

☎ 319.259.9377

✉ info@eberthoney.com

🌐 www.eberthoney.com

🏠 1090 Highway 1 North
Mount Vernon, Iowa 52314
14808 South 102nd Ave. East
Lynnville, Iowa 50153

📱 @eberthoney

Tag us on social media or use #eberthoney!

WWW.EBERTHONEY.COM



UNRIVALED DESIGN

We build the world's best bee smoker.

Dadant bee smokers are made in the U.S.A. Replicated by many, the Dadant smoker continues to be unmatched.

Based on the original Bingham design, Dadant has been manufacturing these smokers since acquiring the A.G. Woodman company in the 1970's.

These premium smokers have excellent smoke output and a superior bellows design.

The Dadant smoker is of time proven quality and is a favorite among beekeepers worldwide.

Shop with us online at dadant.com



Online dadant.com | Toll-Free 888.922.1293

From the Editors


Thank you for your support during this transition. We have felt so welcomed by many of you, and want to continue to serve you in ways that benefit you. Please feel free to reach out to one or both of us to let us know what you do or do not like about The Buzz. We received some feedback that some fonts were hard to read at times. We are trying a new font for the articles this month. Please let us know if it is better, or worse.

In bee world, I have been excited about our progress at Gilmore City-Bradgate (GC-B)! We started the spring with five hives, and now have nine from splits. We will probably make at least one more. One of our hives is BOOMING! We have created three splits from it. One was a split with four frames of brood and nurse bees above a queen excluder (the original queen was left in the bottom deep), then taken to another location. A new caged queen was added to the new split. Another split was an experiment for me. I took all of the frames that had charged queen cells (ones that were built out for queen cells and had eggs/larva in them), shook the bees off, then put them in a deep box above a queen excluder. We pulled that box off the next morning to create a split. Let it sit, and lone behold – it worked! I was pleasantly surprised!!

Happy honey flow! -Kelsey

What do you want to see in The Buzz?

You spend hours looking at The Buzz, right? Let me guess...you spend even more time waiting for it to arrive, right?! So.....What do you want to see in The Buzz?

Do you want to have a search for a specific picture in The Buzz, like a tiny bee  within lines of text or in a picture, and whoever finds it first, and emails me gets a prize?

Do you want a bee photo contest? Or maybe a "Bee Kind" section where people are recognized for doing something helpful for another beekeeper? Or maybe a coloring contest for adults, and kids?

This is your newsletter, I just put it together. Tell me what YOU would like to see by emailing me, Kelsey Wigans, Editor, at ihpaeditor@gmail.com



DID YOU KNOW?



Water and hot burning wax DO NOT MIX!

Water will cause a wax (or grease fire) to splash, and spread the flames.

The best way to put out a wax fire is to put a lid on it, pour flour or baking soda over it to take away the oxygen.



2 Million Blossoms - The Podcast

Bringing you science, arts and news on the environment and sustainability

Host, Kirsten Traynor, is the former editor of **American Bee Journal** and **Bee World**. The *free* podcast brings guest speakers to you to learn about pollinators. Learn about new topics every other week

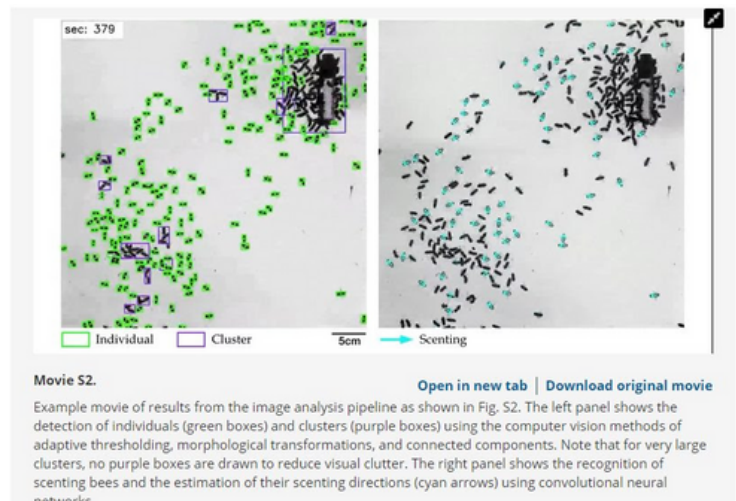
Flow-mediated olfactory communication in honeybee swarms

Dieu My T. Nguyen, Michael L. Iuzzolino, Aaron Mankel, Katarzyna Bozek, Greg J. Stephens, and Orit Peleg

Published in: PNAS (Proceedings of the National Academy of Sciences of the United States of America)

"We show that bees locate their queen by performing a cascade of "scenting" events, where individual bees direct their pheromone signals by fanning their wings. The bees create a dynamic spatiotemporal network that recruits new broadcasting bees over time, as the pheromones travel a distance that is orders of magnitude the length of an individual. We develop high-throughput machine learning tools to identify the locations and timings of scenting events, and demonstrate that these events integrate into a global "map" that leads to the queen.

We use these results to build an agent-based model that illustrates the advantage of the directional signaling in amplifying the pheromones, thus leading to an effective search and aggregation process."



IHPA LEADERS



IHPA OFFICERS

President: Roy Kraft
P.O. Box 1
Goldfield, IA 50542
Ph: (515) 293-2458
kroyster.rk@gmail.com

Vice President: Kris Silvers
2088 310th Ave
Woodburn, IA 50275
Ph: (515) 418-0996
Kristin.Silvers@gmail.com

Secretary: Heidi Love
18115 F Ave.
Perry, IA 50220
Ph: (515) 729-1761
bhlove5@aol.com

Treasurer: Rhonda Heston
52735 187th Ave
Chariton, IA 50049
Ph: (515) 724-2124
IHPATreasurer@gmail.com

Historian: Dave Korver
3314 510th St.
Maurice, IA 51036
Ph: (712) 541-4803
korverdavid@gmail.com

Past Pres: Eve Vanden Broek
134 Holland Dr.
Pella, IA 50219
Ph: (515) 491-6760
mrstheo@iowatelecom.net

Event Coordinator: Cheri VanSickle
24148 Sumac Road
Neola, Iowa 51559
Ph: (712) 566-9294
vansicklemm@hotmail.com

Webmaster: Eric Kenoyer
IHPA1912@gmail.com

DISTRICT DIRECTORS

District 1: Chris Jackson
524 South 2nd Ave.
Danville, IA 52623
Ph: (319) 850-6559
chrisjjackson1977@gmail.com

District 2: Tom Hart
1107 12th St. NE
Cedar Rapids, IA 52402
Ph: (319) 213-6807
cedarvalleyapiaries@gmail.com

District 3: Ed St John
1642 Oak View Dr. NE
Solon, IA 52333
Ph: (319) 491-4343
esj178@gmail.com

District 4: Jamie Beyer
269 U Ave.
Boone, IA 50036
Ph: 515 231-0215
beyersbog@aol.com

District 5: Jason Foley
13778 Summerset Rd.
Indianola, IA 50125
Ph: (515) 991-4666
Russianbeeguy@gmail.com

District 6: Jim Kraninger
2229 195th Ave
Milford, IA 51351
Ph: (712) 330-6329
bojibeekeeper@gmail.com

PROGRAM LEADERS

State Apiarist: Andrew Joseph
Ph: (515) 725-1481
andrew.joseph@iowaagriculture.gov
IDALS website: www.agriculture.state.ia.us

ISU Entomologist: Amy Toth, PhD
amytoth@iastate.edu
www.public.iastate.edu/amytoth/Toth_lab/Home.html

ISU Extension Beekeeper: Randall Cass
Ph: (515) 294-2507,
randall@iastate.edu

Legislative Rep: Jamie Beyer
(see District 4)

IHPA Queen Program:
Connie Bronnenberg
14405 Hull Ave
Perry, IA 50220-6343
Ph: (515) 480-6076
cbronny823@aol.com

Youth Scholarship:
Stephanie Meyers
26362 G Avenue
Hubbard, IA 50122
Ph: (641) 691-5036
sonshinefarsia@gmail.com

Bee Emergency Program Info:
Roy Kraft
(see President)

Editors for "The Buzz"

Kelsey Wigans
402 SE E Avenue
Gilmore City, IA 50541
Ph: (319) 215-7483
ihpaeditor@gmail.com

Lisa Montgomery
lisabzhoney@gmail.com

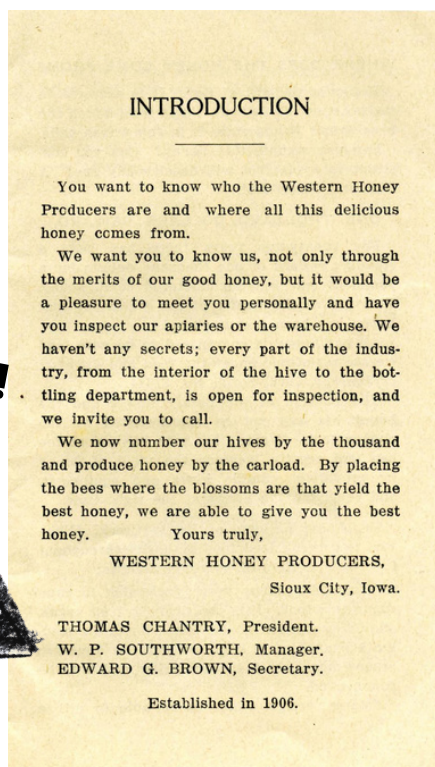
"ISU : Iowa State University

Remnants from the Past

IHPA Presidents through the Years

1911	W. P. Southworth	11972-73	Albert Andriano
1912-15	Frank Pellett	1974	Russell Griggs
1915-16	C. E. Bartholomew	1975-77	Vernon Rath
1917	B. T. Beasdale	1978-79	Ivan Rickers
1918	F. Eric Millen	1980-81	Ellsworth Gustafson
1919-22	Dr. F. A. Bonney	1982-83	Ann Garber
1923-24	W. S. Walker	1984	Francis Hinkelman
1925-30	N. Williamson	1985	Robert Yapp
1931-33	N. I. Lyle	1986	Loring Miller
1934	Ed Brown	1987-88	H. Glenn Burkett
1935-36	John Jessup	1989-92	John Johnson
1937-38	John Johnson	1993-94	Leroy Kellogg
1939-40	N. I. Lyle	1995-97	Paul Goossen
1941-43	G. P. Schatz	1998-99	Curt Bronnenburg
1944-47	Glenn Jones	2000-01	Russell Swenson
1948-50	Earl Robinson	2002-03	Tim Laughlin
1951-52	John Jessup	2004-10	Donna Brahms
1953-54	Henry Hansen	2011-12	Curt Bronnenburg
1955-57	Herald Partello	2013-15	Pat Ennis
1958	Carl Soder	2016-17	Roy Kraft
1959-60	Lyle Newman	2018	Eve Vanden Broek
1961-62	Tom Doonan	2019-22	Roy Kraft
1963-64	Leo Shirk		
1965-66	Carol Mains		
1967-69	Earl Robinson		
1970-71	Herald Partello		

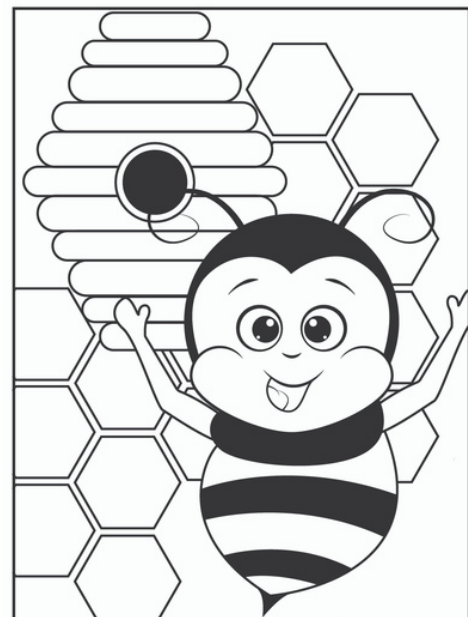
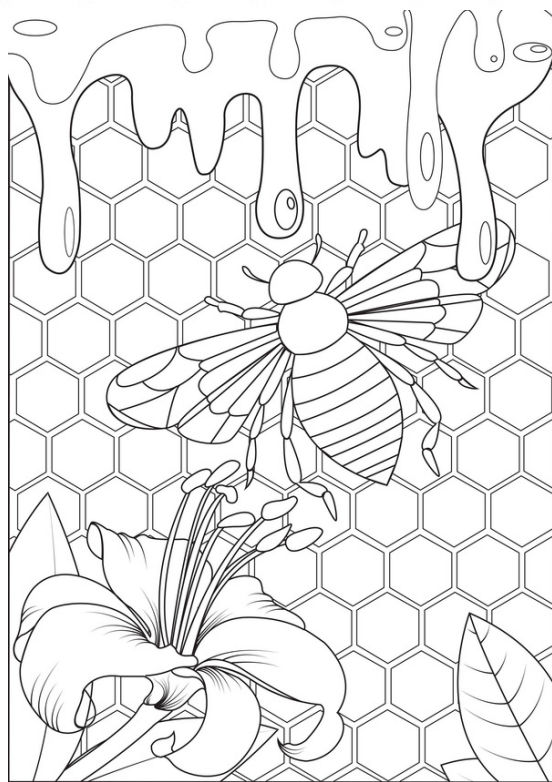
Thanks to our Historian, David Korver, for his work on this. It is sometimes healthy to look back and appreciate the work of the people whose shoulders the IHPA now stands on.



Voca-bee-ulary

B	D	M	Y	L	L	E	J	L	A	Y	O	R	O
W	A	G	G	L	E	D	A	N	C	E	B	E	E
R	E	G	A	P	I	V	A	R	D	U	R	G	W
A	B	L	A	R	V	A	E	N	E	N	O	R	D
T	V	R	F	O	U	N	D	A	T	I	O	N	B
C	A	L	O	O	T	E	V	I	H	O	D	G	R
E	R	R	I	R	O	C	E	L	B	M	U	B	B
N	R	D	R	A	O	B	M	O	T	T	O	B	A
P	O	L	L	E	N	A	R	N	B	D	G	G	E
N	A	L	S	H	S	E	L	A	H	S	U	R	B
T	T	E	O	U	W	W	B	C	T	R	W	A	X
E	O	N	P	O	P	R	E	K	R	O	W	E	R
Y	E	L	L	N	E	E	U	Q	E	E	T	N	V
Y	O	F	C	O	R	S	R	U	S	S	I	A	N

FOUNDATION
 FLOWER
 WAGGLE DANCE
 POLLEN
 APIVAR
 CANOLIAN
 HIVE TOOL
 BEE
 WAX
 QUEEN
 VARROA
 ROYAL JELLY
 BRUSH
 SUPER
 RUSSIAN
 BUMBLE
 BOTTOM BOARD
 LARVA
 EGG
 WORKER
 NECTAR
 DRONE
 HONEY
 BROOD





Iowa Honey Producers Association

2021 Summer Field Day

July 10, 2021

8:30 a.m.- 4:00 p.m. (Registration 8:00 a.m.)

“KEEP the KNOWLEDGE FLOWING”

EBERT MT. VERNON HONEY, Adam Ebert

1090 Highway One North

Mount Vernon, Iowa

This will be a full day of knowledge exchange for beekeepers of all levels.
A delicious lunch is included in the registration cost.

Name:_____

Address:_____

City:_____ Zip:_____

Phone:_____ Email:_____

REGISTRATION:

Single (Member) \$40.00 before July 3, 2021

Number attending: _____ X \$40.00 = _____

After July 3, 2021 number attending:_____ X \$60.00 = _____

Single non-member: \$60.00 before July 3, 2021

Number attending \$60.00_____ X \$60.00 = _____

After July 3, 2021 Number attending_____ X \$80.00 = _____

Walk-ins on July 10, 2021 are welcome (members and non-members) \$100.00

Please mail your registration forms in as soon as possible to save on your registration fee.

Return this completed form with your check payable to IHPA by Friday, July 3, 2021 to:

Rhonda Heston, IHPA Treasurer

52735 187th Avenue

Chariton IA 50049

NEW!!!! You may now pay online using this link: <https://ihpa.ecwid.com/>

Got questions? E-mail Cheri VanSickle, Event Coordinator at:
vansicklemm@hotmail.com and put **“2021 Field Day Questions”**
in the subject line or call (712) 566-9294



Iowa Honey Producers Association (IHPA) Annual Membership Form

Our membership year runs from January 1-December 31.
See the back of The Buzz Newsletter; your expiration date appears above your name
One copy of The Buzz will be sent per household address

Please PRINT clearly so your information can be read. This is what will be published in the new directory.

First member: \$20.00 TOTAL

First and Last Name: _____ \$20.00

Address: _____

City: _____ State: _____ Zip Code: _____

County: _____

E-mail address: _____

Phone Number: 1st Contact Number: (_____) _____

2nd Contact Number: (_____) _____

At this time we are suspending online readership

May we publish your information in the IHPA Directory

Yes _____ No _____

SECOND MEMBER: \$5.00

First and Last Name: _____ \$

E-mail address: _____

NEXT MEMBER: \$5.00

First and Last Name: _____ \$

E-mail address: _____

DONATIONS:

Additional year(s) of membership Primary # of years _____ at \$20 \$

Additional year(s) of membership NEXT # of years _____ at \$5 \$

Additional year(s) of membership NEXT # of years _____ at \$5 \$

FAIRBOOTH RENOVATION FUND - to be used for improvements \$

GENERAL FUND - to be used for day to day expenses \$

QUEEN FUND - to be used to help the Queen and her travels \$

YOUTH PROGRAM - to be used to provide students with supplies \$

TOTAL: \$

Make checks payable to Iowa Honey Producers Association or IHPA

Mail cash or check to: Rhonda Heston, 52735 187th Ave, Chariton, IA 50049 (515) 724-2124

The IHPA is 501 (c) 5 organization, which gives us the ability to provide you with a tax deductible letter of donation for any/all of your donations. Please indicate if you wish a letter to be sent for the 2020 calendar year Yes ___ or No ___

NEW THIS YEAR: If you would like to pay by credit/debit card please email Rhonda Heston, ihpatreasurer@gmail.com

Subject line: INVOICE IHPA.

Once you receive the email, you will be directed to an online payment page. Enter card info and click "Pay" to submit your payment. Once the payment has been processed you, and Rhonda will receive confirmation.

For office use: Pmt Rcvd _____ Check # _____ Amt _____ Letter of Donation _____

Please sign up to help at the IHPA Iowa State Fair Booth

Please return completed form to:

Heidi Love
18115 F Avenue
Perry, IA 50220

Name of Volunteers: _____

Address: _____ City: _____

State: _____ Zip _____ Phone no.: _____

Fair dates August 12-22, 2021

Please write the date(s) you would like to work and circle the shift time block that works best for you.

Date:_____	9.00 am-1.30 pm	1.30 pm-6.00 pm	6.00 pm-9.00 pm
Date:_____	9.00 am-1.30 pm	1.30 pm-6.00 pm	6.00 pm-9.00 pm
Date:_____	9.00 am-1.30 pm	1.30 pm-6.00 pm	6.00 pm-9.00 pm

We appreciate any help you can provide!

The Buzz Newsletter

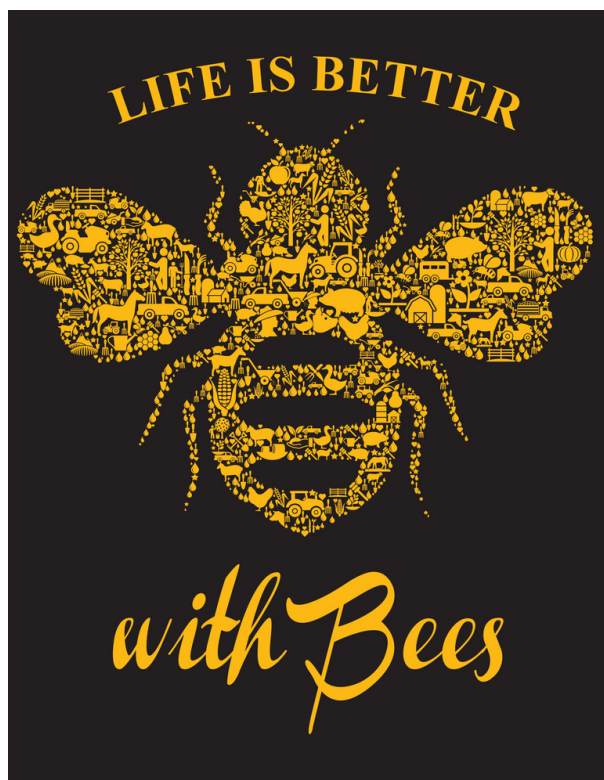
Iowa Honey Producers Association

52735 187th Avenue

Chariton, IA 50049



The Buzz is a monthly newsletter published by the Iowa Honey Producers Association which is an affiliate of the Iowa State Horticultural Society



Get your "Life is Better with Bees" apparel and accessories!!!

Men's Items:

- | | |
|-----------------------|---------|
| • T-shirt | \$15.00 |
| • Long Sleeve | \$20.00 |
| • Crewneck Sweatshirt | \$25.00 |
| • Hooded Sweatshirt | \$30.00 |

Women's Items:

- | | |
|-----------------------|---------|
| • T-shirt | \$15.00 |
| • T-shirt, V-Neck | \$15.00 |
| • Long Sleeve | \$20.00 |
| • Crewneck Sweatshirt | \$25.00 |

Accessories:

- | | |
|----------------------------|---------|
| • Apron | \$15.00 |
| • 30 oz. Stainless Tumbler | \$30.00 |

Go to shopihp.com to get yours today!