

Steps involved in humane harvest: Stun to Stamp



Arrival from Farm and Humane Harvest under Federal Inspection



Hide Removal



Waste not, want not: Hyde's can be tanned to generate additional revenue!!! (Otherwise, offal)

- Improve sustainability and profitability
- Reduce Waste
- Support accessory industries
- Only Problem is finding a tannery



Evisceration: Removal of GI tract and Internal Organs



Carcass
Washdown:
180° F





Finally, The Hot Carcass

- This is your “hanging weight”
- At this point the losses from the live weight include:
 - Blood
 - Feet
 - Hyde
 - Head
 - Viscera
 - Any additional Trim***

Meat Science and Muscle Biology Lab at Mississippi State University



- **18,000 sq. ft. USDA Inspected Red Meat Processing Facility**
- **1500 sq. ft. Harvest Floor (Beef, Pork, Lamb, Goat)**
- **“Glassroom” viewing room, Commercial Smokehouse, Pilot kitchen**
- **Equipped for Virtual Teaching, Extension and Outreach**
- **Commissioned July 13, 2018**

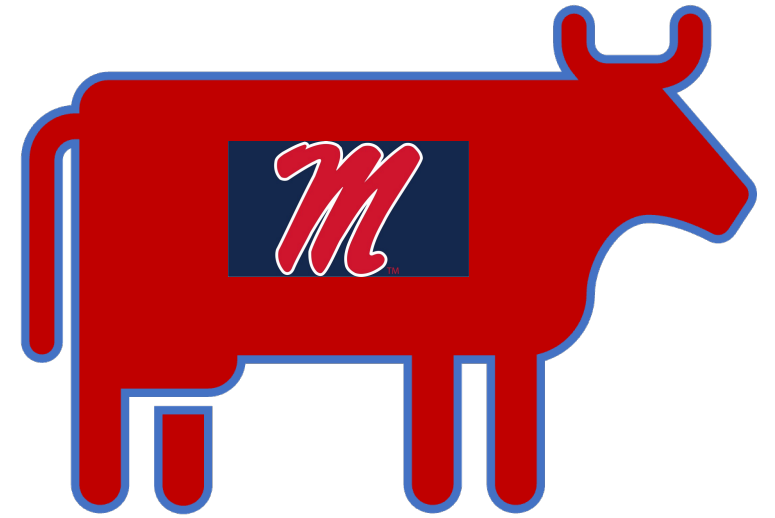


Mobile Processing Units

- Ideal for small ruminants
 - Reduced aging
 - Smaller Size
 - Rapid Cooling
 - Easy Fabrication
- Closer to the farm
- Reduced Environmental footprint?
- Direct Marketing for Producers

Use of a Mobile Processing Unit to Harvest Beef >1200lbs

- Duration: 3 hours
- Major Issues:
 - Size (length) of the animal relative to the trailer height
 - Transferring from hoist to rail
 - Splitting carcass (proximity to sink)
 - Length of finished carcass vs. floor clearance
 - Tracking of Mud, etc. into unit

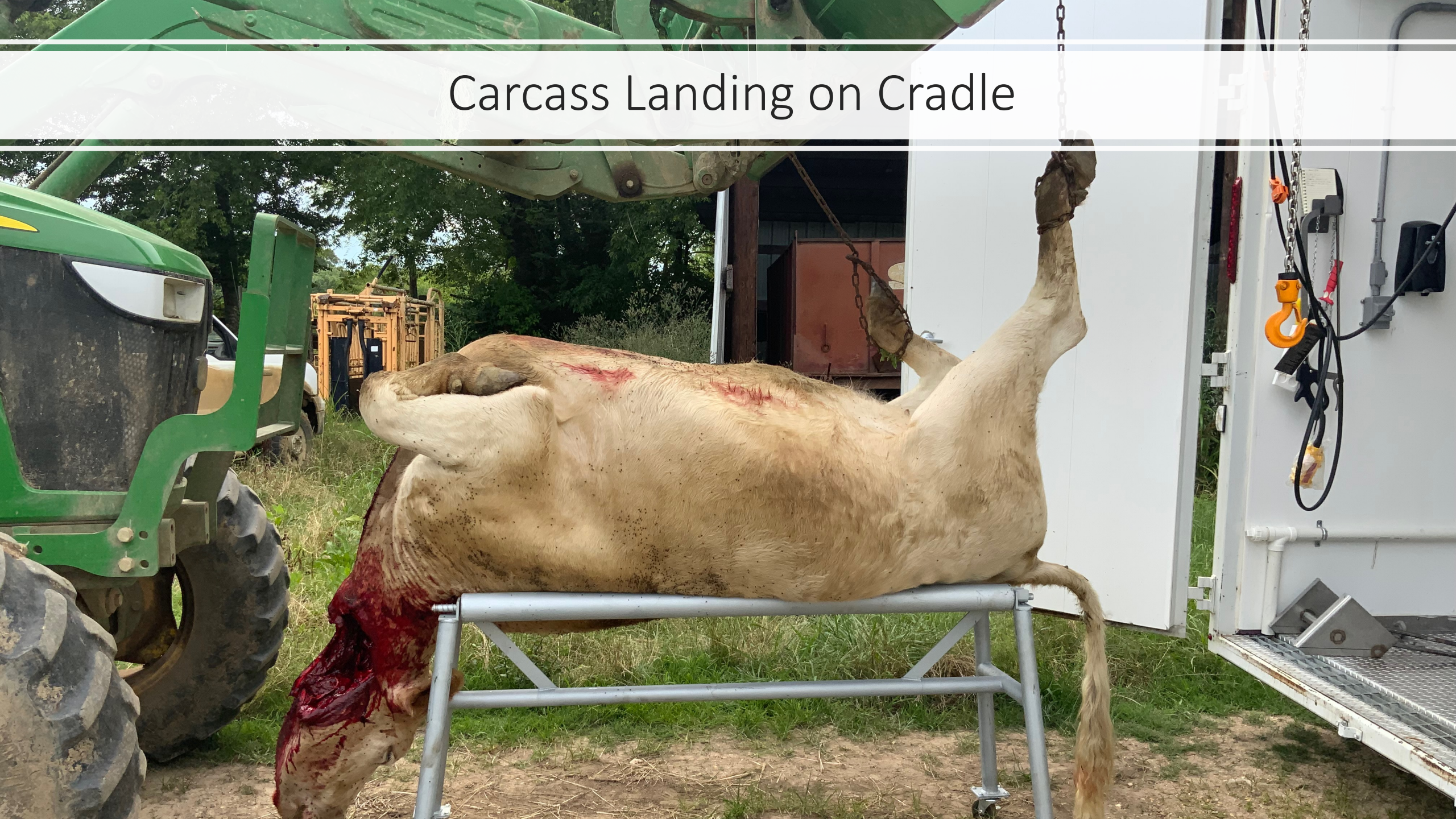


Landing Carcass on Cradle

- Beef carcass was longer than trailer height
- Required a tractor with a bucket to hoist carcass onto cradle
- Will raise USDA flags



Carcass Landing on Cradle





Skinning and Splitting the Breastbone



Goats hanging in MPU

- Unit can hold about 18 goats at a time
- Reduced cleaning costs
- Reduced cooling costs
- Can harvest about 24 goats in 4 hours



Legacy of Outreach

- Geographic and Cultural Proximity
- Experiential Credibility
- Meeting Producers and Processors Where they Are
- *“Lifting the Veil”*





**JESUP
WAGON**
Original
Portable
School
Invented
by
Jesup
1906
\$25.00

Development Alabama Movab

Jesup Agricultural Wagon Booker T. Wash

1906



The Jesup Agricultural Wagon is a portable school that can be used in any location. It is a simple and efficient design that is easy to use and maintain. The wagon is made of wood and is built to last. It is a great investment for any school or organization that needs a portable classroom.

THE JESUP AGRICULTURAL WAGON



Acknowledgements

- This material is based upon work that is supported by the National Institute of Food and Agriculture, U.S. Department of Agriculture, through the Southern Sustainable Agriculture Research and Education program under subaward number ES20-156. USDA is an equal opportunity employer and service provider.