

Porcine Pregnancy Test

Meredith Jolitz, Ava Holzer, Lexi Gunn,
Jacqueline Craig, & Krysten Hearron



Pregnancy Test

- ❑ Detects HCG (human chorionic gonadotropin) in urine
- ❑ The hormone binds to the antibodies on the test stick
- ❑ Also contains a control line

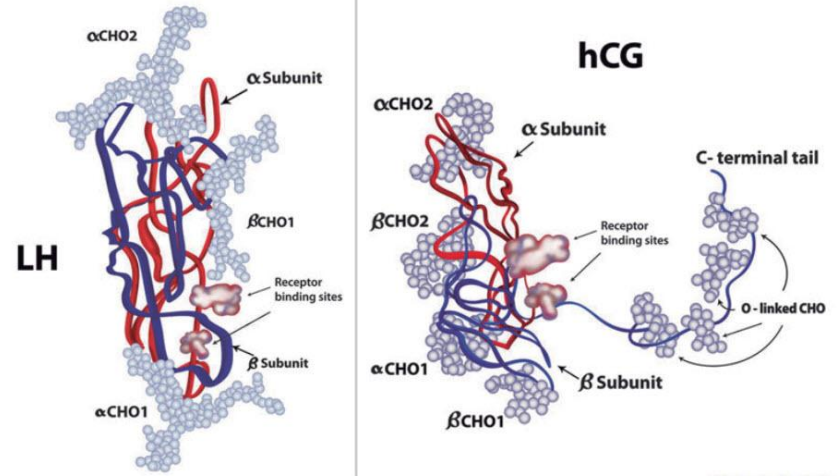


Photo Source-<https://hcg diet drops protocol.com/does-hcg-hormone-effect-fertility/>



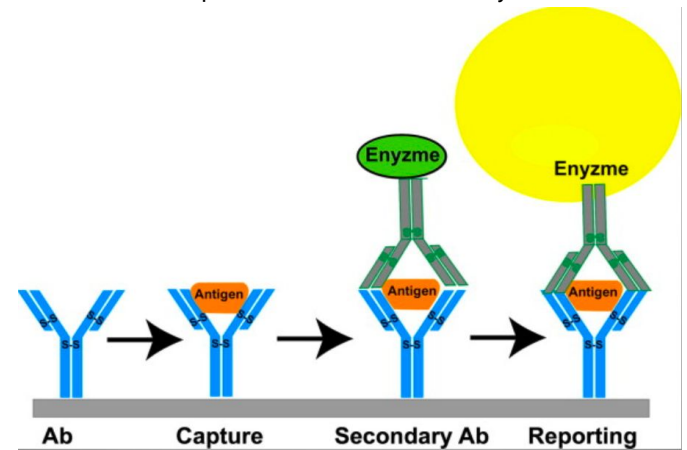
Photo Source-<https://blog.pregistry.com/positive-pregnancy-test/>

ELISA Test

- ❑ Enzyme-linked Immunoassay
- ❑ Used to detect antibodies in the blood or urine
- ❑ Antibodies are produced by the body in response to antigens

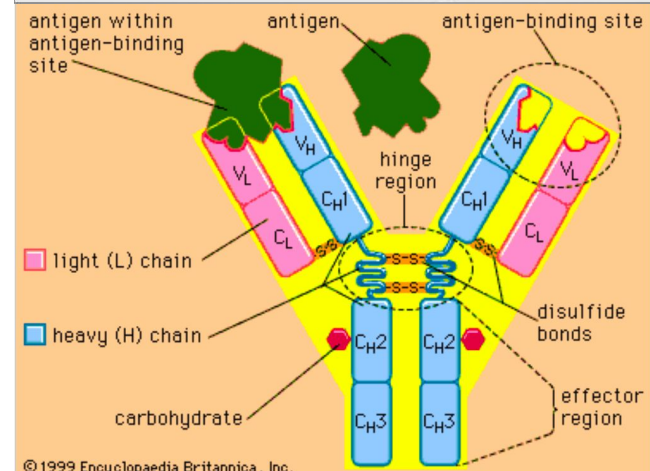
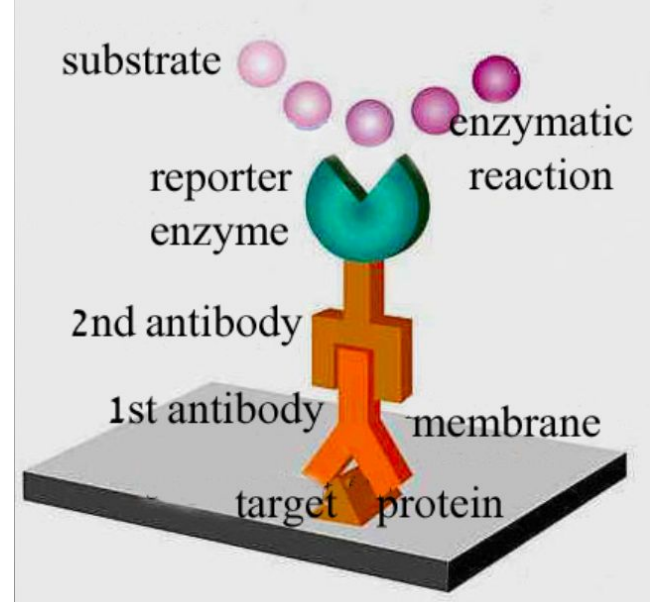


Photo Source-<https://www.medicalnewstoday.com>



Antigens & Antibodies

- ❑ Antibodies are naturally occurring in animals
- ❑ They are produced in response to Antigen
- ❑ In an ELISA test the antibodies bind to the antigens that are on the test



Dipstick Tests

- ❑ Commonly used to test for proteins, glucose, ketones, etc.
- ❑ Hormones indicative of pregnancy are detectable
- ❑ Indicates the concentration of proteins



Hormones

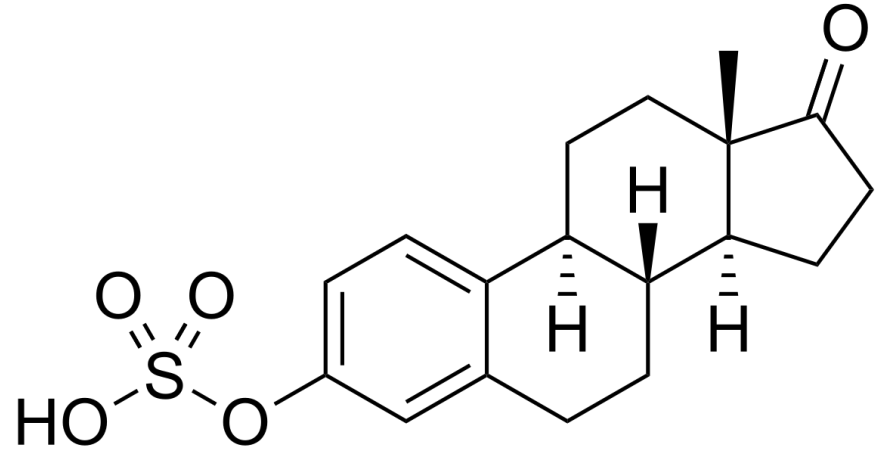
- ❑ HCG is produced during the course of human pregnancy
- ❑ Cats and Dogs produce Relaxin
- ❑ Estrone Sulfate, Progesterone, Estradiol 17 beta, and PGE2 (Prostaglandin E2)



Photo Source-<https://en.wikipedia.org/wiki/Relaxin>

Estrone Sulphate

- ❑ Produced within 24-29 days after mating
- ❑ $C_{18}H_{22}O_5S$
- ❑ Measured in plasma or urine
- ❑ Form of estrogen
- ❑ It is a natural steroid
- ❑ Provide information about fetus



Photo

Source-https://en.wikipedia.org/wiki/Estrone_sulfate?scrllybrkr=85577d03

Progesterone

- ❑ Necessary to prepare the uterus
- ❑ Supplies the lining of the womb with nutrients
- ❑ $C_{21}H_{30}O_2$

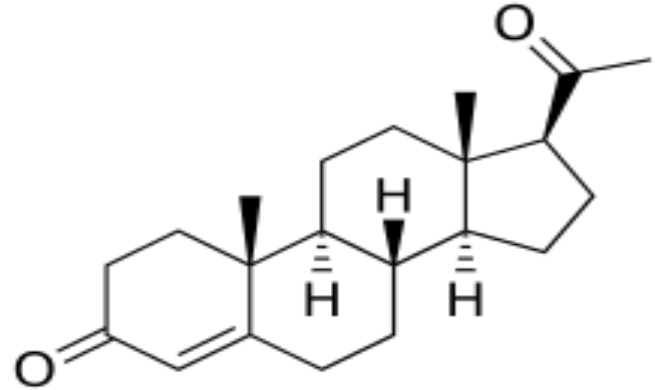


Photo
Source-<https://en.wikipedia.org/wiki/Progesterone>

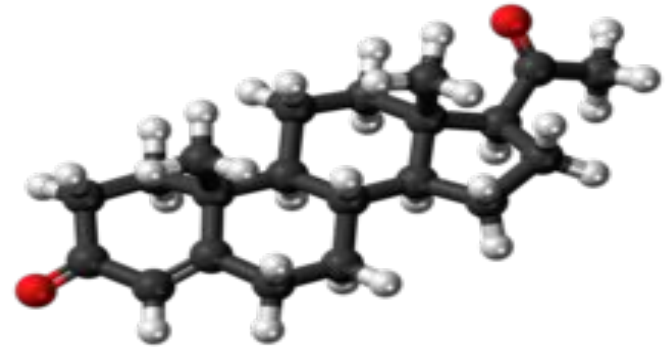


Photo
Source-<https://en.wikipedia.org/wiki/Progesterone>

Estradiol 17 β

- ❑ Synthesized from testosterone
- ❑ Ovarian cells and placenta
- ❑ Breast development
- ❑ Changes in body shape
- ❑ Important to maintain pregnancy
- ❑ C₁₈H₂₄O₂

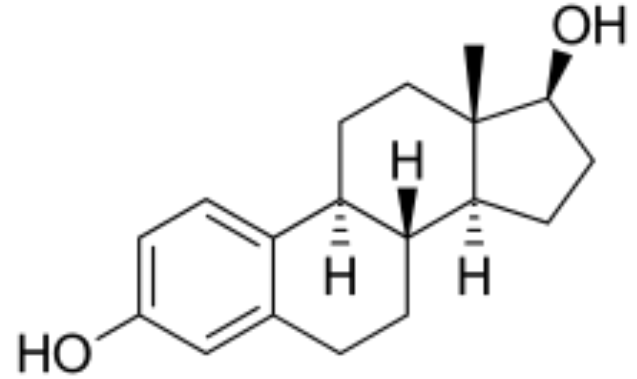
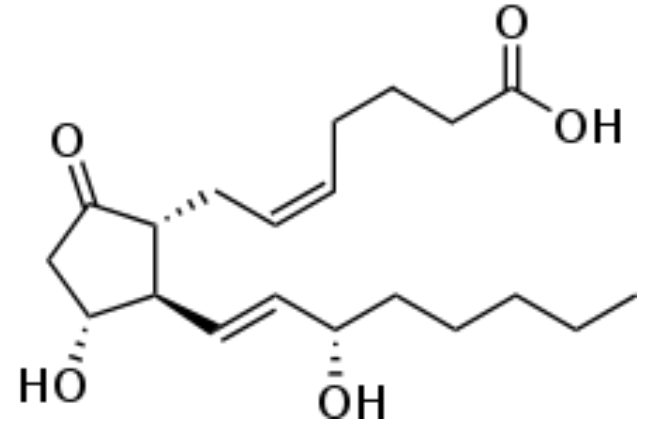


Photo Source-<https://en.wikipedia.org/wiki/Estradiol?sclrybrkr=85577d03>

PGE₂

- ❑ Prostaglandin E₂
- ❑ Also known as dinoprostone
- ❑ Produced by the uterus
- ❑ First 12-14 days of pregnancy
- ❑ C₂₀H₃₂O₅



Photos Source-https://en.wikipedia.org/wiki/Prostaglandin_E2

Our Plan

- ❑ Create a dipstick test that would detect the concentration of the four hormones listed above
- ❑ High concentrations of each hormone would be indication of a positive pregnancy



Sources

Dipstick urinalysis • LITFL • CCC Investigations. (2021). Retrieved 5 February 2021, from <https://litfl.com/dipstick-urinalysis/>

RESEARCH: Progesterone supplementation effect on pig embryo survival. (2021). Retrieved 5 February 2021, from <https://www.pigprogress.net/Breeding/Management/2012/9/RESEARCH-Progesterone-supplementation-effect-on-pig-embryo-survival-PP009274W/>

("When to Take a Pregnancy Test | Options, Cost and Accuracy", 2021)

Ferrer, M. S. (2014). Estrone sulfate. Retrieved February 05, 2021, from <https://www.sciencedirect.com/topics/pharmacology-toxicology-and-pharmaceutical-science/estrone-sulfate>

Ziecik, A., Przygodzka, E., Jalali, B., & Kaczmarek, M. (2018, September 01). Regulation of the porcine corpus luteum during pregnancy. Retrieved February 05, 2021, from <https://rep.bioscientifica.com/view/journals/rep/156/3/REP-17-0662.xml#:~:text=The%20high%20production%20of%20progesterone,required%20during%20the%20entire%20pregnancy.>