

Feed Analysis Report

Representative:

Ryan Heinen
Dr Darren Zimmerman

Gwenyn Hill Farm 4897
N130W294 Bryn Dr
Waukesha, WI 53188
605.380.2697

6-20-23 Prairie NIR Warm Season Pasture
Ryan Heinen

Dry Matter 32.81%
Moisture 67.19%

Description (%DM unless specified)	Dry Matter Basis	Grasses	
		60 dy Avg	4 yr Avg
Dry Matter	32.81	38.7	28.6
Crude Protein	10.91	14.2	15.4
Soluble Protein, %CP	5.48	18.1	26.1
Avail. Crude Protein	10.70	13.8	14.8
ADICP	0.21	0.376	0.624
NDICP	2.63	2.73	2.43
ADICP %CP	1.96	2.21	4.05
ADF	35.96	33.1	35.9
aNDF	59.03	53.0	53.4
aNDFom	56.18	49.1	49.5
Calcium	0.25	0.314	0.442
Phosphorus	0.21	0.298	0.325
Magnesium	0.17	0.182	0.234
Potassium	1.13	2.50	2.61
Sulfur	0.17	0.213	0.206
Fat (EE)	3.31	3.60	3.22
Ash	7.23	10.8	10.9
Lignin	6.13	5.44	5.10
Sugar (ESC)	5.70	6.10	4.89
Sugar (WSC)	6.69	9.39	7.80
Starch	5.76	3.04	2.23
NDF Digest.: Traditional=Goering & Van Soest Method, Standardized=Combs-Goeser Method			
NDFD 30, %NDF	55.52	54.5	50.1
Standardized NDFD 30, %NDF	38.02	42.4	36.5
NDFD 240, %NDF	72.21	76.5	70.6
uNDF30	26.26	23.6	26.2
uNDF240	16.41	11.7	15.3
tNDFD30om %aNDFom	58.28	57.4	53.0
tNDFD240om %aNDFom	74.42	79.3	73.3
uNDF30om	23.44		
uNDF240om	14.37		
Calculations			
RFQ	119		
Dynamic NDF Kd (using 24,30,48 hr) %/hr	6.16		
RFV	96	111	106
NFC	22.14	18.9	18.6
Milk 2006 Energy calculated using 30h Trad NDFD Dairy			
TDN 1X	58.04	59.0	54.7
NEL 3x, Mcal/lb	0.624	0.621	0.596
NEG, Mcal/lb	0.321	0.337	0.262
NEM, Mcal/lb	0.579	0.597	0.516
Milk/Ton, lb	2786	2784	2551

For analysis guidelines, please visit <https://www.rockriverlab.com>

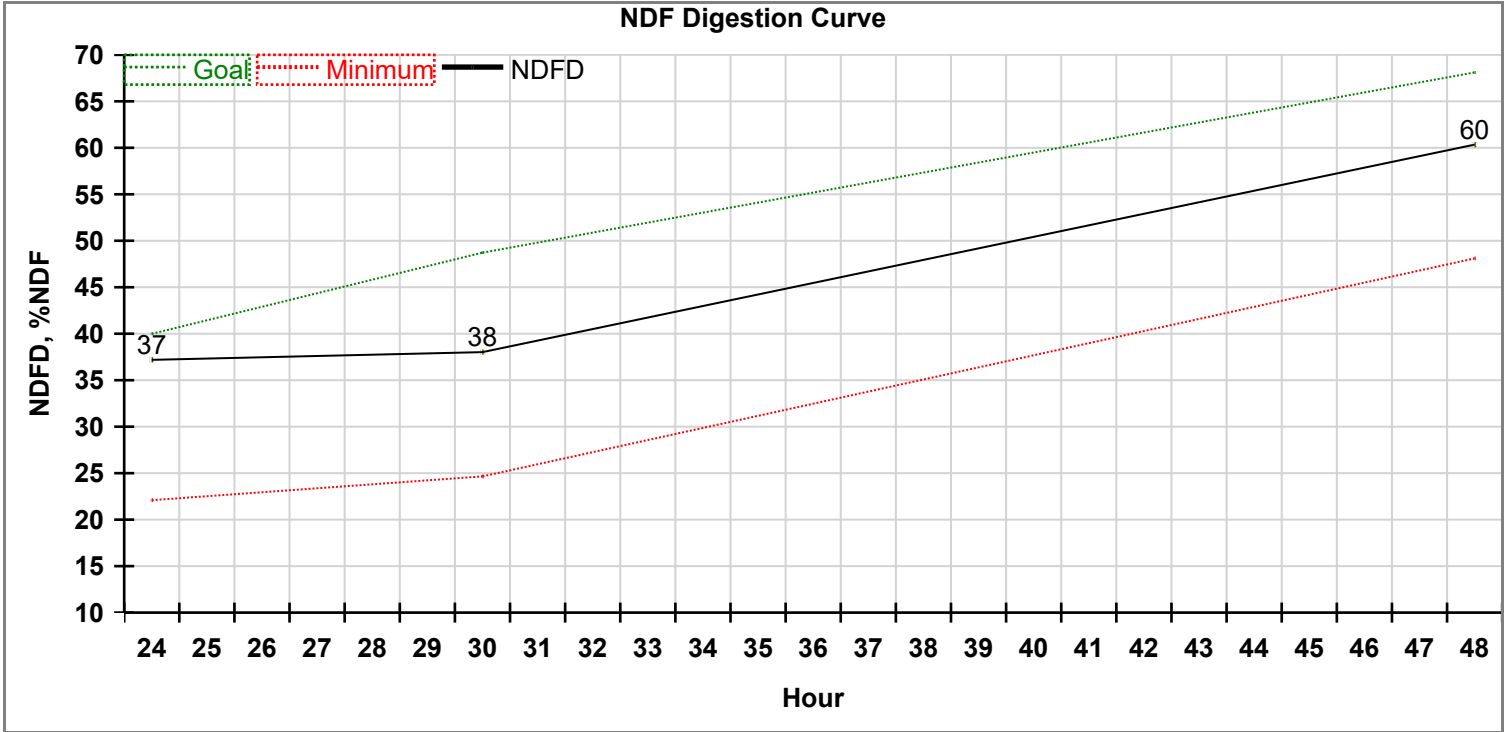
Feed Analysis Report

Representative:
Ryan Heinen
Dr Darren Zimmerman

Gwenyn Hill Farm 4897
N130W294 Bryn Dr
Waukesha, WI 53188
605.380.2697

6-20-23 Prairie NIR Warm Season Pasture
Ryan Heinen

Dry Matter 32.81%
Moisture 67.19%

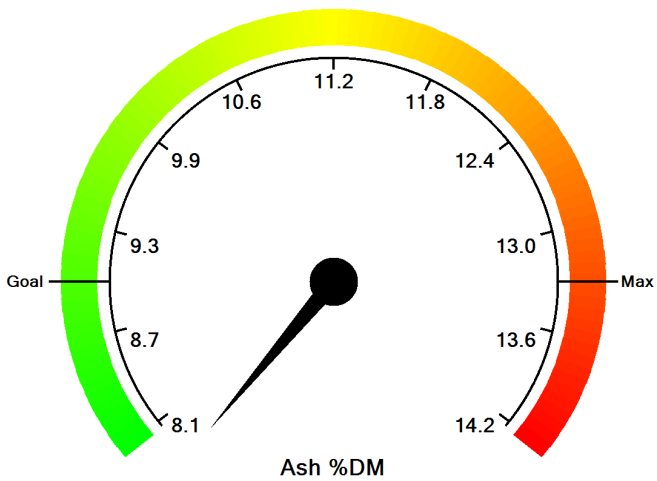
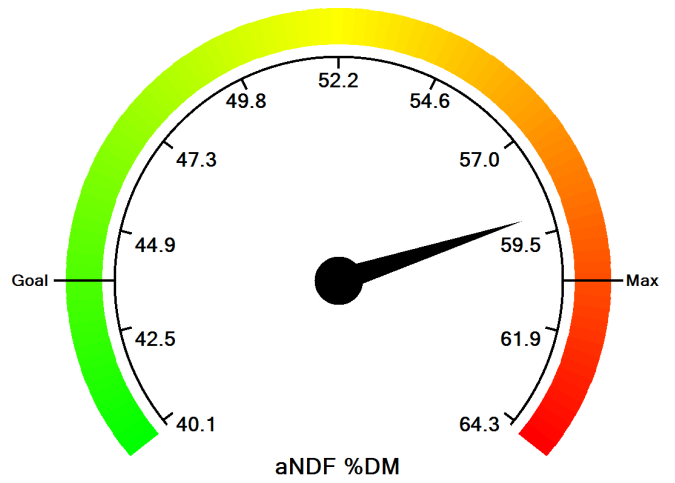
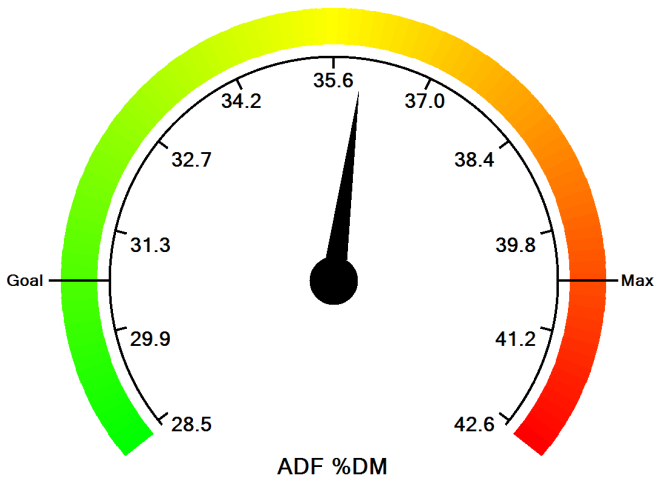
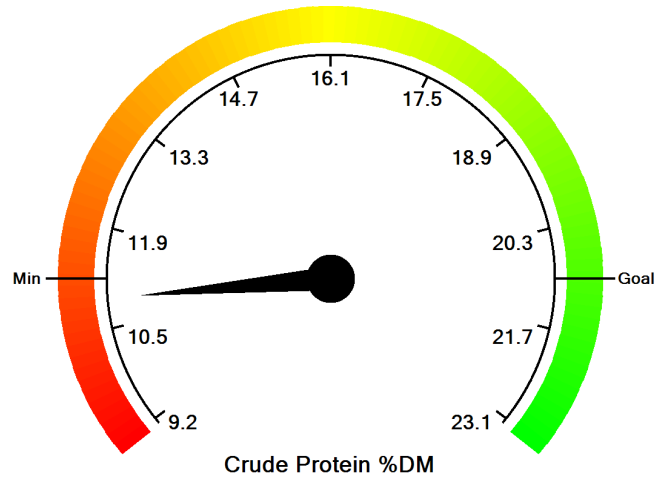
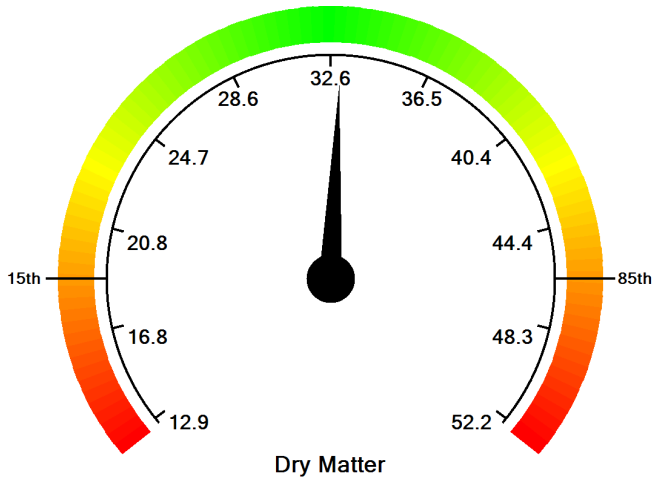


aNDF (w/NaSO₃) %DM = 59.0

The Goal corresponds to the 85th percentile and the Minimum corresponds to the 15th percentile.

Visual Feed Analysis Report

Lab Number 1460414 6/20/2023
Sample ID 6-20-23 Prairie NIR Warm Season Pasture
Farm Ryan Heinen
Consultant Ryan Heinen; Dr Darren Zimmerman



The Goal corresponds to the 85th percentile and the Minimum corresponds to the 15th percentile.