

Feed Analysis Report

Representative:
Ryan Heinen
Dr Darren Zimmerman

Gwenyn Hill Farm 4897
N130W294 Bryn Dr
Waukesha, WI 53188
605.380.2697

7-3-23 Prarie NIR Crop 1
Ryan Heinen

Dry Matter 32.93%
Moisture 67.07%

Description (%DM unless specified)	Dry Matter Basis	Grasses	
		60 dy Avg	4 yr Avg
Dry Matter	32.93	34.2	28.6
Crude Protein	9.62	13.8	15.4
Soluble Protein, %CP	5.06	15.9	26.1
Avail. Crude Protein	9.42	13.4	14.8
ADICP	0.21	0.356	0.624
NDICP	2.27	2.66	2.43
ADICP %CP	2.13	2.17	4.05
ADF	35.48	35.2	35.9
aNDF	59.41	55.8	53.4
aNDFom	57.81	52.7	49.5
Calcium	0.37	0.314	0.442
Phosphorus	0.20	0.278	0.325
Magnesium	0.20	0.182	0.234
Potassium	0.99	2.44	2.61
Sulfur	0.18	0.204	0.206
Fat (EE)	2.93	3.60	3.22
Ash	5.98	10.5	10.9
Lignin	6.48	5.65	5.10
Sugar (ESC)	5.98	6.73	4.89
Sugar (WSC)	7.13	9.48	7.80
Starch	5.10	3.55	2.23
NDF Digest.: Traditional=Goering & Van Soest Method, Standardized=Combs-Goeser Method			
NDFD 30, %NDF	52.08	54.4	50.1
Standardized NDFD 30, %NDF	32.49	41.6	36.5
NDFD 240, %NDF	69.53	75.9	70.6
uNDF30	28.47	24.3	26.2
uNDF240	18.10	13.1	15.3
tNDFD30om %aNDFom	55.72	57.4	53.0
tNDFD240om %aNDFom	72.22	78.1	73.3
uNDF30om	25.60		
uNDF240om	16.06		
Calculations			
RFQ	116		
Dynamic NDF Kd (using 24,30,48 hr) %/hr	6.09		
RFV	96	102	106
NFC	24.33	19.7	18.6
Milk 2006 Energy calculated using 30h Trad NDFD Dairy			
TDN 1X	56.74	57.8	54.7
NEL 3x, Mcal/lb	0.624	0.614	0.596
NEG, Mcal/lb	0.298	0.317	0.262
NEM, Mcal/lb	0.555	0.576	0.516
Milk/Ton, lb	2749	2759	2551

For analysis guidelines, please visit <https://www.rockriverlab.com>

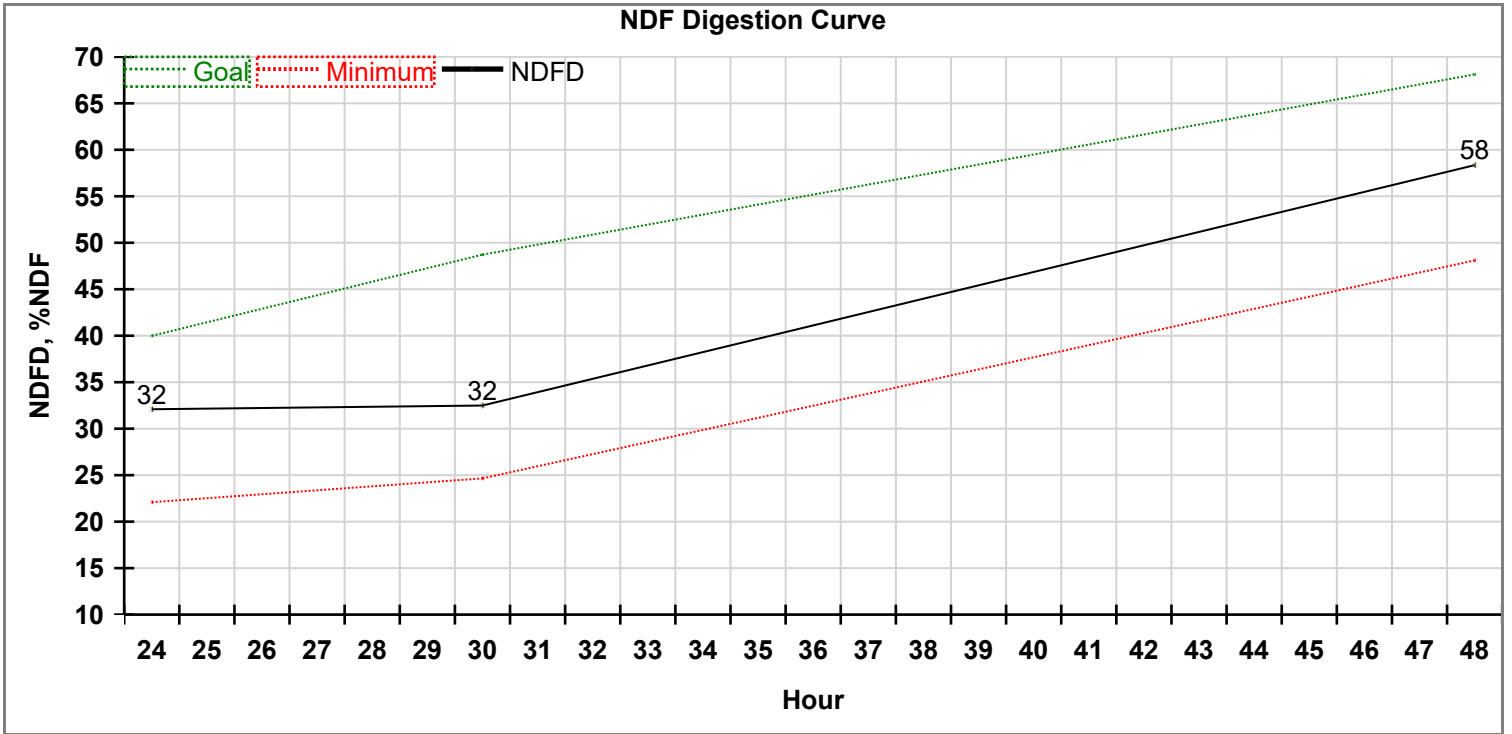
Feed Analysis Report

Representative:
Ryan Heinen
Dr Darren Zimmerman

Gwenyn Hill Farm 4897
N130W294 Bryn Dr
Waukesha, WI 53188
605.380.2697

7-3-23 Prarie NIR Crop 1
Ryan Heinen

Dry Matter 32.93%
Moisture 67.07%

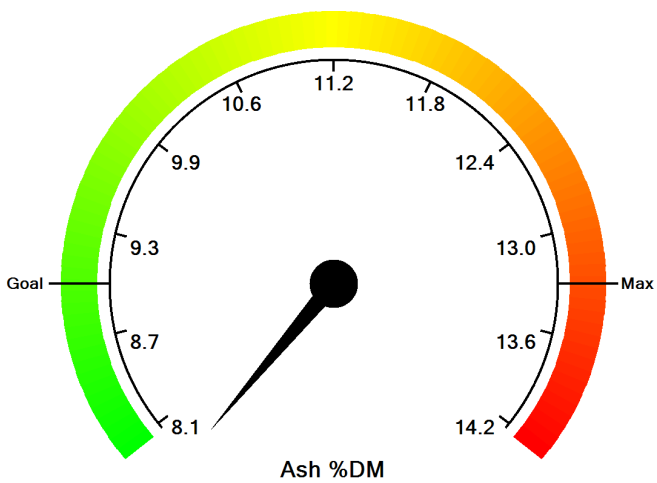
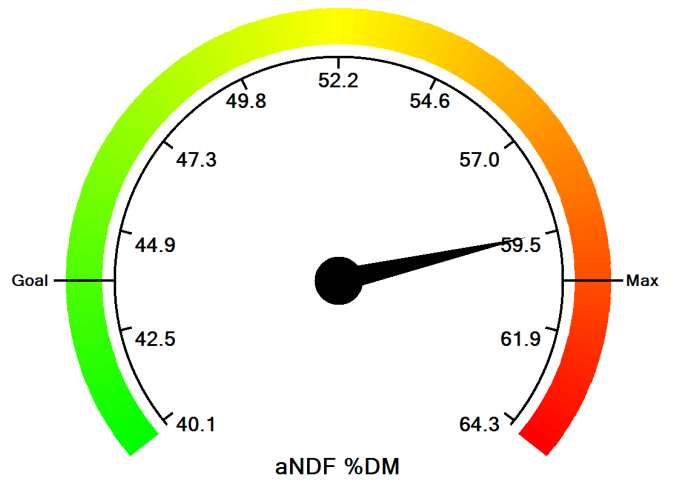
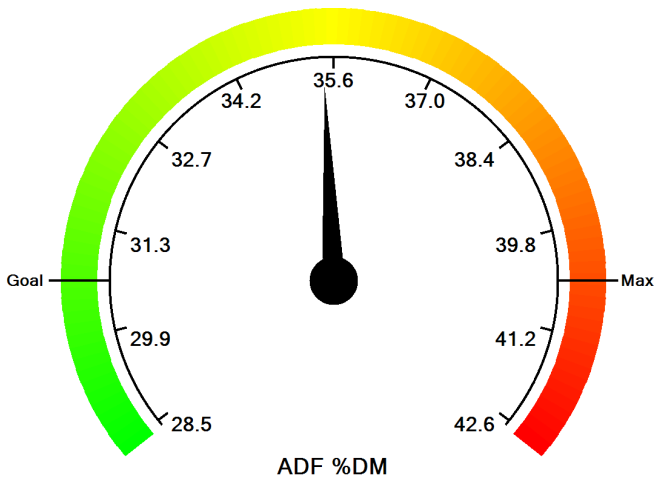
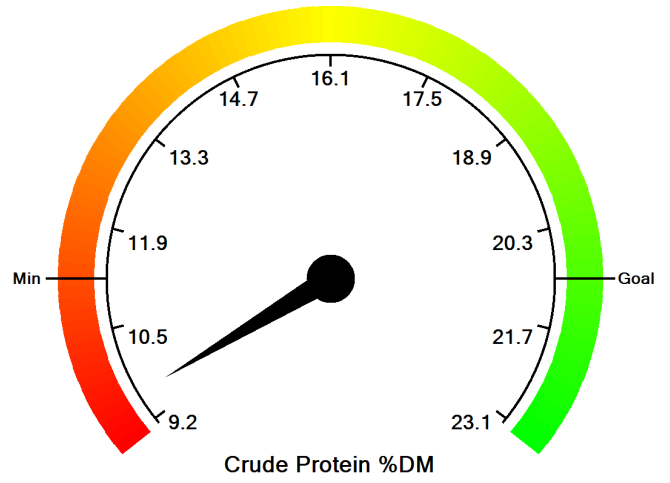
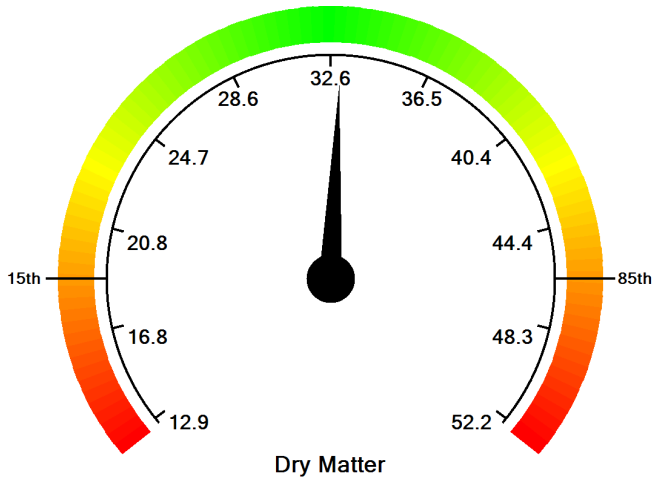


aNDF (w/NaSO₃) %DM = 59.4

The Goal corresponds to the 85th percentile and the Minimum corresponds to the 15th percentile.

Visual Feed Analysis Report

Lab Number 1462606 7/3/2023
Sample ID 7-3-23 Prarie NIR
Farm Ryan Heinen
Consultant Ryan Heinen; Dr Darren Zimmerman



The Goal corresponds to the 85th percentile and the Minimum corresponds to the 15th percentile.