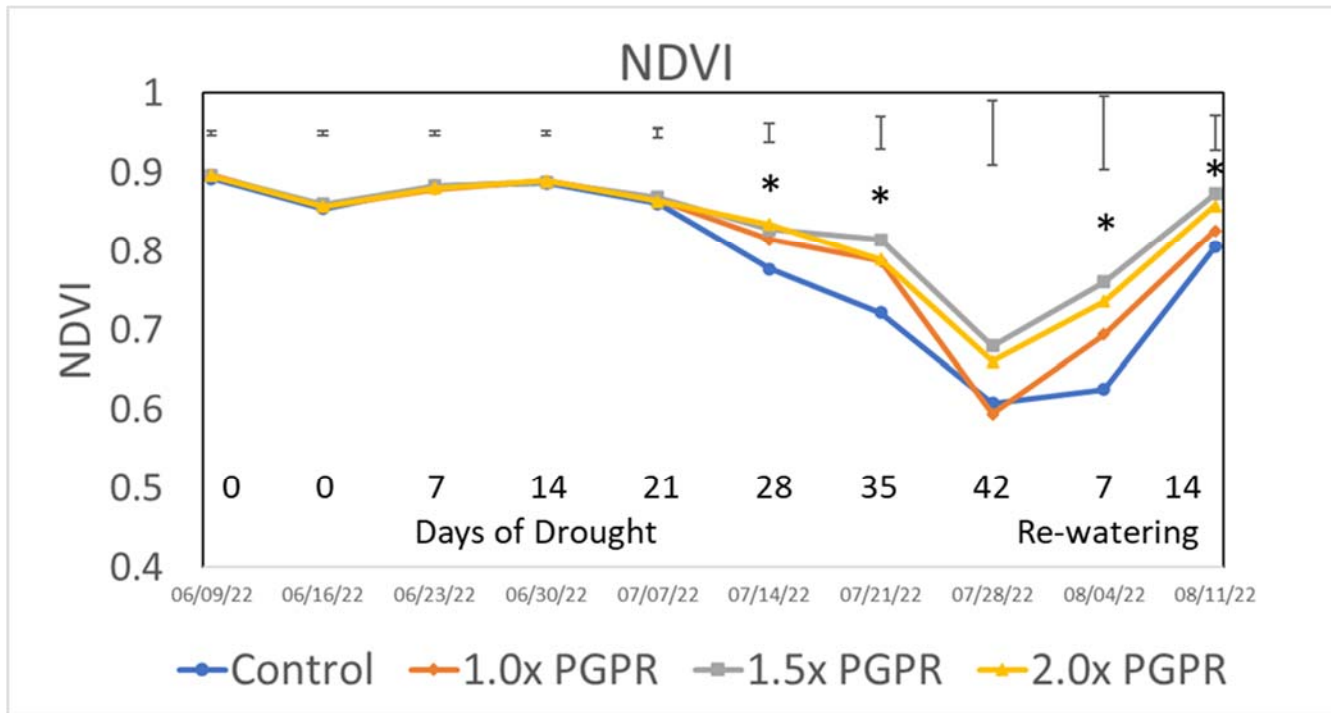


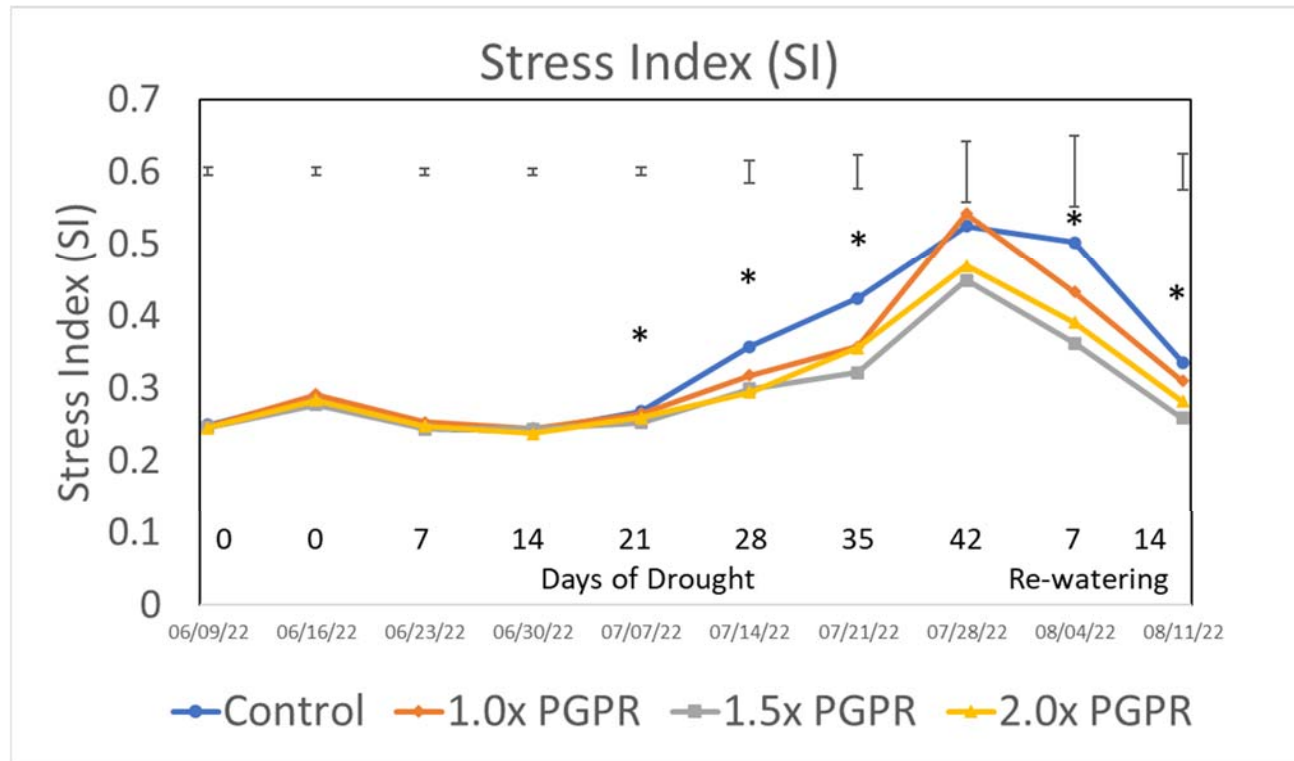
Turf Quality (TQ)	Pre-Treatment	Deficit Irrigation (Days)								Recovery (Days)	
	0	0	7	14	21	28	35	42	7	14	
Control	8.000 ^a	8.000 ^a	8.000 ^a	7.000 ^a	6.000 ^a	5.250 ^a	4.375 ^b	3.750 ^b	4.750 ^b	5.125 ^b	
1.0 x PGPR	8.000 ^a	8.000 ^a	8.000 ^a	7.750 ^a	6.625 ^a	5.750 ^a	5.000 ^{ab}	4.000 ^{ab}	4.875 ^{ab}	5.250 ^{ab}	
1.5 x PGPR	8.000 ^a	8.000 ^a	8.000 ^a	7.250 ^a	6.500 ^a	6.125 ^a	5.250 ^a	4.750 ^a	5.500 ^a	6.125 ^a	
2.0 x PGPR	8.000 ^a	8.000 ^a	8.000 ^a	7.500 ^a	6.500 ^a	5.750 ^a	5.125 ^{ab}	4.500 ^{ab}	5.375 ^{ab}	5.875 ^{ab}	
LSD Values	0.000	0.000	0.000	0.800	0.656	1.000	0.854	0.924	0.653	0.945	

Figure 10: Turf Quality Ratings of creeping bentgrass under 60% ET deficit irrigation treatments and 100% ET post drought recovery. (Values with different letters are significantly different at $p < 0.05$.)



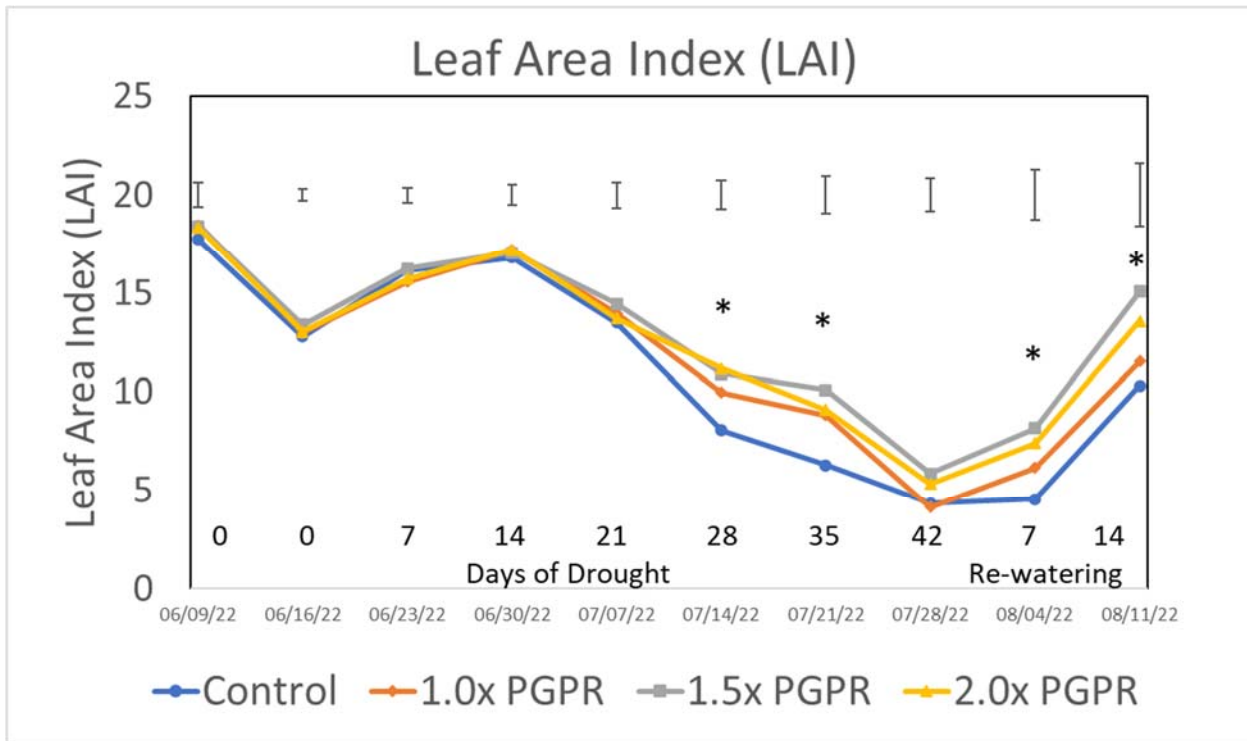
NDVI	Pre-Treatment	Deficit Irrigation (Days)								Recovery (Days)	
	0	0	7	14	21	28	35	42	7	14	
Control	0.893 ^a	0.855 ^b	0.883 ^a	0.887 ^a	0.861 ^a	0.777 ^b	0.722 ^b	0.608 ^{ab}	0.626 ^b	0.805 ^c	
1.0 x PGPR	0.897 ^a	0.857 ^{ab}	0.879 ^a	0.890 ^a	0.866 ^a	0.815 ^a	0.787 ^a	0.594 ^b	0.695 ^{ab}	0.826 ^{bc}	
1.5 x PGPR	0.896 ^a	0.861 ^a	0.883 ^a	0.889 ^a	0.869 ^a	0.828 ^a	0.815 ^a	0.680 ^a	0.761 ^a	0.873 ^a	
2.0 x PGPR	0.896 ^a	0.857 ^{ab}	0.880 ^a	0.890 ^a	0.864 ^a	0.834 ^a	0.790 ^a	0.660 ^{ab}	0.737 ^a	0.858 ^{ab}	
LSD Values	0.007	0.006	0.005	0.006	0.012	0.024	0.039	0.081	0.093	0.044	

Figure 11: NDVI values of creeping bentgrass under 60% ET deficit irrigation treatments and 100% ET post drought recovery. (Values with different letters are significantly different at $p < 0.05$.)



	Pre-Treatment	Deficit Irrigation (Days)									Recovery (Days)	
Stress Index (SI)	0	0	7	14	21	28	35	42	7	14		
Control	0.249 ^a	0.288 ^a	0.244 ^{ab}	0.240 ^a	0.268 ^a	0.357 ^a	0.424 ^a	0.525 ^{ab}	0.502 ^a	0.336 ^a		
1.0 x PGPR	0.248 ^a	0.291 ^a	0.253 ^a	0.244 ^a	0.265 ^a	0.317 ^b	0.357 ^b	0.542 ^a	0.433 ^{ab}	0.310 ^{ab}		
1.5 x PGPR	0.246 ^a	0.277 ^b	0.243 ^b	0.243 ^a	0.252 ^b	0.299 ^b	0.321 ^b	0.449 ^b	0.362 ^b	0.259 ^c		
2.0 x PGPR	0.245 ^a	0.284 ^{ab}	0.248 ^{ab}	0.238 ^a	0.259 ^{ab}	0.294 ^b	0.355 ^b	0.470 ^{ab}	0.391 ^b	0.282 ^{bc}		
LSD Values	0.011	0.011	0.009	0.009	0.011	0.031	0.047	0.085	0.098	0.050		

Figure 12: Stress Index values of creeping bentgrass under 60% ET deficit irrigation treatments and 100% ET post drought recovery. (Values with different letters are significantly different at $p < 0.05$.)



	Pre-Treatment	Deficit Irrigation (Days)								Recovery (Days)	
Leaf Area Index (LAI)	0	0	7	14	21	28	35	42	7	14	
Control	17.733 ^a	12.778 ^b	16.150 ^a	16.815 ^a	13.499 ^a	8.057 ^b	6.294 ^b	4.319 ^{ab}	4.539 ^b	10.312 ^c	
1.0 x PGPR	18.481 ^a	12.980 ^{ab}	15.561 ^a	17.183 ^a	13.969 ^a	9.964 ^a	8.803 ^a	4.143 ^b	6.137 ^{ab}	11.527 ^{bc}	
1.5 x PGPR	18.429 ^a	13.395 ^a	16.230 ^a	17.070 ^a	14.460 ^a	10.914 ^a	10.084 ^a	5.846 ^a	8.169 ^a	15.066 ^a	
2.0 x PGPR	18.338 ^a	13.038 ^{ab}	15.740 ^a	17.215 ^a	13.725 ^a	11.182 ^a	9.085 ^a	5.330 ^{ab}	7.390 ^a	13.567 ^{ab}	
LSD Values	1.258	0.578	0.745	1.022	1.288	1.482	1.912	1.681	2.559	3.196	

Figure 13: Leaf Area Index values of creeping bentgrass under 60% ET deficit irrigation treatments and 100% ET post drought recovery. (Values with different letters are significantly different at $p < 0.05$.)