

Figure 22. Seawater temperature (°C) at Timber Cove, Gouldsboro, Maine during high tide from 18 June 2022 to 21 January 2023.

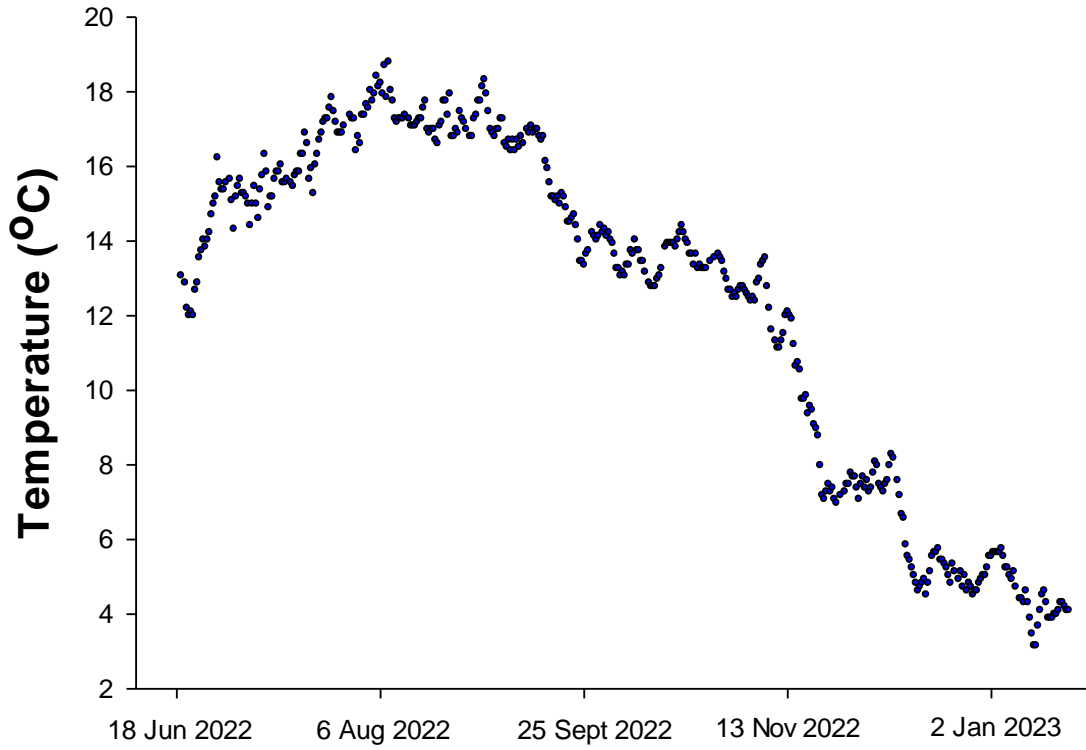


Figure 23. Seawater temperature ($^{\circ}\text{C}$) at Mud Hole Cove, Great Wass Island, Beals, Maine during high tide from 18 June 2022 to 31 December 2022. (The recording device failed 20 days prior to the sampling date.)

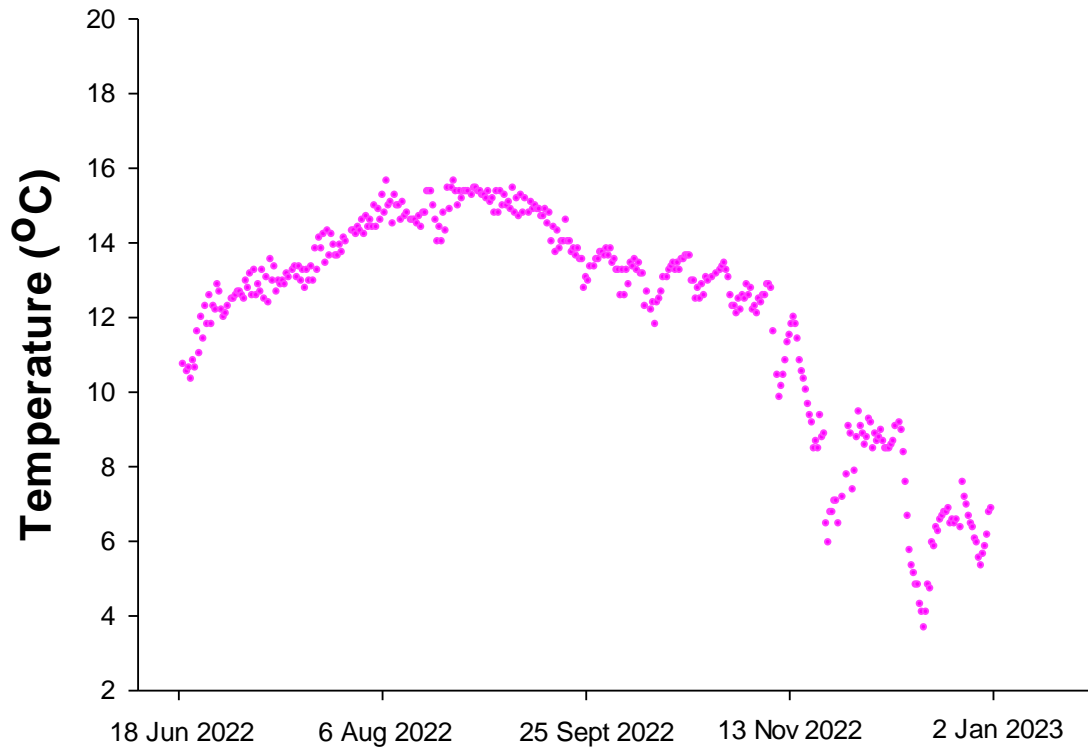


Figure 24. Seawater temperature (°C) at Timber Cove, Gouldsboro, Maine and Mud Hole Cove, Great Wass Island, Beals, Maine during the study period (see legends for Figs. 22-23).

