



**Current Season of Growth:** mid      **Today's Weather:** Sunny, scattered clouds, high 80

**Form Used:** 2K6 Rancher 11-14" 8/06

### 1. Pasture Notes

**Pasture Size:** 713 acres

**Grazable Acres:** 713 acres

**Management:**

**Unique Conditions:**

### General Notes:

False annual wheatgrass not buffalo grass. Lepideum clasping. Colimia.

### 2. Weather History

	Temperature	Precipitation	<b>Nearest Range Gauge:</b>  <b>Total Precipitation: 0"</b> (from Dec 31, 2999 to Jan 01, 1970)
Previous Fall			
Winter			
Spring			
Summer			
Fall			

### 3. Grazing

**Rest Period Before 1st Graze:**

Intensity:

**Site Grazed?**

Rest/Opportunity:

**Graze Uniformity:**

Season:

**Estimated Utilization:**

Precipitation:

### Grazing Dates:

Animal Type	Feed Factor	# Animals	Start Date	End Date	Stocking Rate (SADs / Acre)

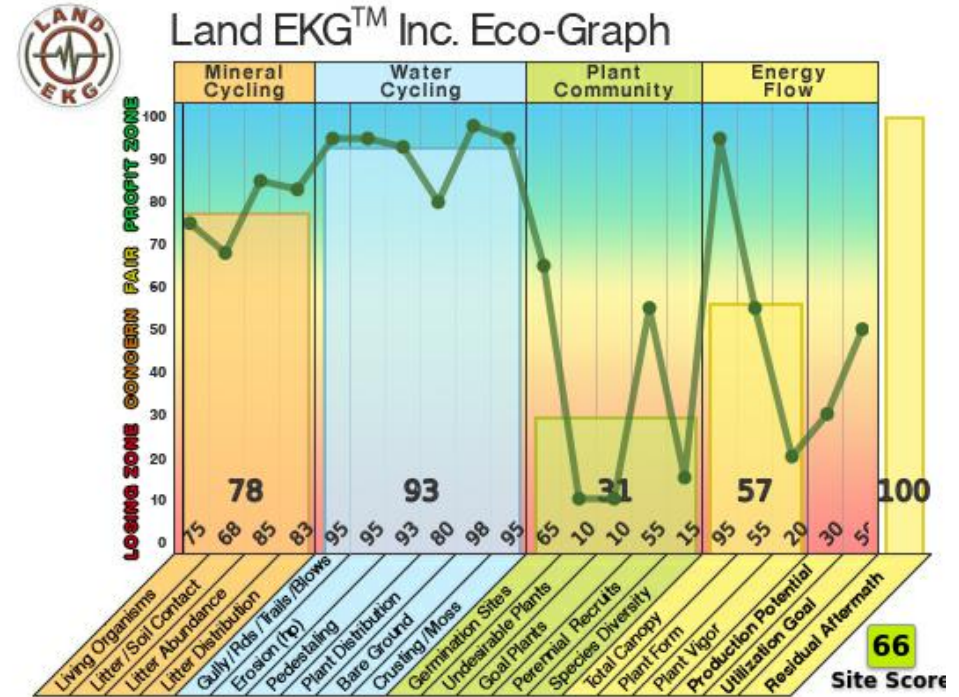
**Grazing Index Score**  
(-5 = worst, +5 = best)

**NaN**

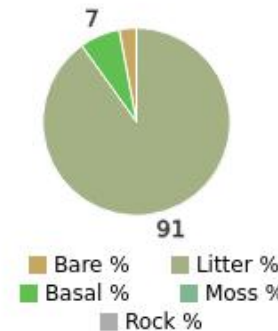
**Total Days:** 0 days

**Peak Stock Density:** 0 Animals/acre

### 4. Land EKG Eco-Graph:



### 5. Surface Cover:



### Leaf Height and Canopy:

Avg Leaf Height:	5 inches
Max Leaf Height:	10.8 inches
% Live Canopy:	1%

### Plant Diversity:

Grasses: 1.5 Forbs: 0 Other: 0



### 6. Plant Species Composition (Average from Hoops)

(also known as 4-3-2-1)

1. 93% Brome Cheatgrass
2. 5% Wheatgrass Annual
3. 3% Bluegrass Sandberg

### 7. Plant Inventory (# = 22): (Goal Plant, Undesirable Plant, Absent But Possible Plant)

#### Grasses

**Brome Cheatgrass**

**Needleandthread Needle and Thread**

**Needlegrass Green**

**Wheatgrass Bluebunch**

**Wheatgrass Western**

Bluegrass Sandberg

Wheatgrass Annual

Wheatgrass Crested

Wheatgrass Squirreltail

#### Forbs

**Cactus Prickly Pear**

Pale madwort

Spiderwort

Daisy Fleabane

Dandelion Common

Nuttal's Segolily

Tansy Aster

Lettuce Prickly

Mustard Tall Tumblemustard

Salsify

Sandmat

#### Shrubs

Sagebrush Big

Saltbush Gardner

#### Trees

### 8. Living Organisms( # = 15)

(Abundant Organism\*)

Age	Organism Name	Sign
Fresh	Pronghorn	Sighting
Fresh	Butterfly	Sighting
Fresh	Grasshopper	Call/Song
Fresh	Meadowlark	Call/Song
Fresh	Mormon cricket	Sighting
Ancient	Mammal	Bone
Old	Cattle	Track(s)
Old	Cattle	Manure
Fresh	Bird	Call/Song
Ancient	Pronghorn	Shed
Ancient	Mammal	Burrow(s)
Fresh	Ant	Mound(s)
Fresh	Ant	Sighting
Fresh	Raven	Sighting
Fresh	Coyote	Manure

### 9. Forage Production

<b>Pasture:</b> 1191 lbs/acre
<b>Notes:</b>



**Indicator Notes:**

**Site Recommendations:**

**SITE PHOTOS**



Shortline

(EKG Pro Eco-Graph)

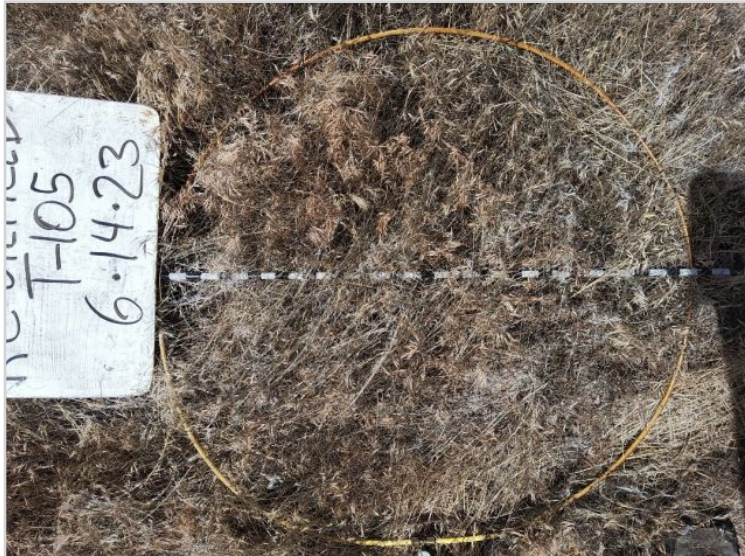
2023-06-14



Longline

(EKG Pro Eco-Graph)

2023-06-14



Cvr - Bar:0 Ltr:97 Bsl:3 Mos:0 Rck:0 | SpDv: G:1 F:0 O:0  
**Hoop 1 (EKG Pro Eco-Graph) 2023-06-14**



Cvr - Bar:0 Ltr:97 Bsl:3 Mos:0 Rck:0 | SpDv: G:1 F:0 O:0  
**Hoop 1 Back (EKG Pro Eco-Graph) 2023-06-14**



Cvr - Bar:5 Ltr:84 Bsl:11 Mos:0 Rck:0 | SpDv: G:2 F:0 O:0  
**Hoop 2 (EKG Pro Eco-Graph) 2023-06-14**



Cvr - Bar:5 Ltr:84 Bsl:11 Mos:0 Rck:0 | SpDv: G:2 F:0 O:0  
**Hoop 2 Back (EKG Pro Eco-Graph) 2023-06-14**