

Figure 1. Maturity profile board for determining peanut pod maturity and estimating the optimal digging date using pod mesocarp color.

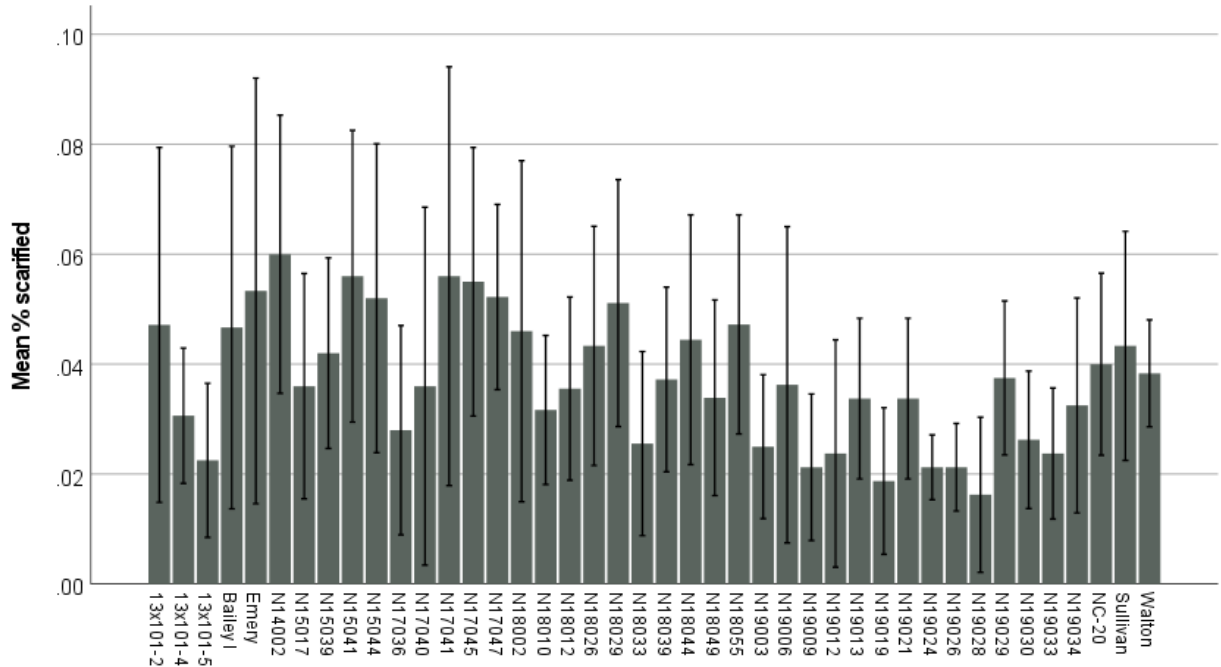


Figure 2. Average percentage of scarified pods due to SCRW feeding across 42 evaluated varieties and advanced breeding lines. Error bars represent +/- standard errors.

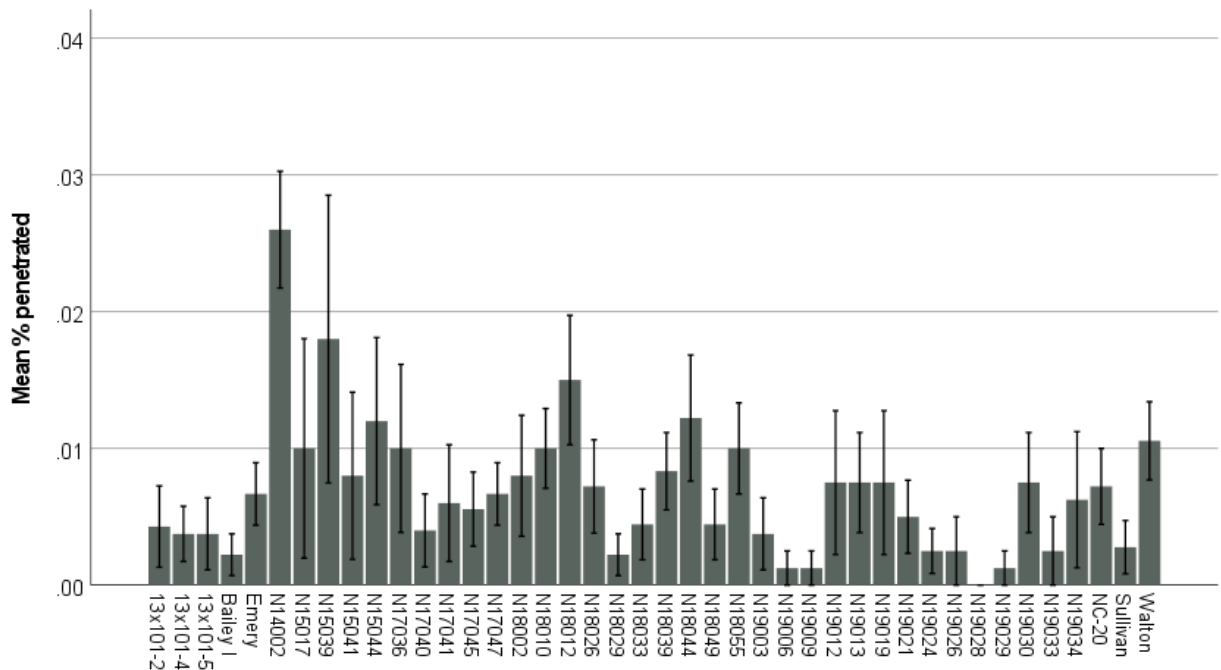


Figure 3. Average percentage of penetrated pods due to SCRW feeding across 42 evaluated varieties and advanced breeding lines. Error bars represent +/- standard errors.

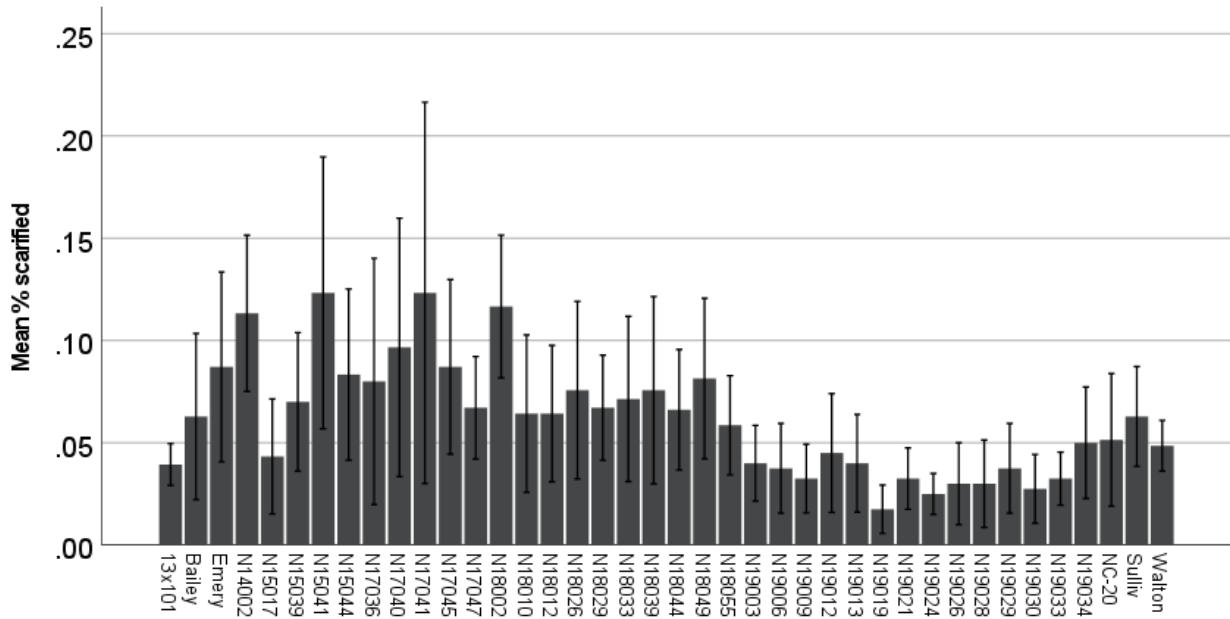


Figure 4. Average percentage of scarified pods due to SCRW feeding across the 42 evaluated varieties and advanced breeding lines when harvested early. Error bars represent +/- standard errors.

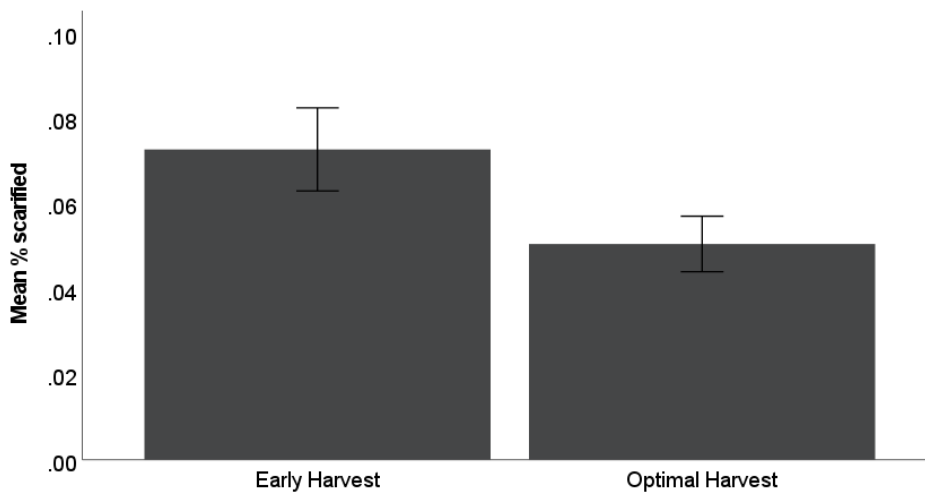


Figure 5: Comparison of mean percent scarification at an early and optimal digging. Error bars represent +/- standard errors.

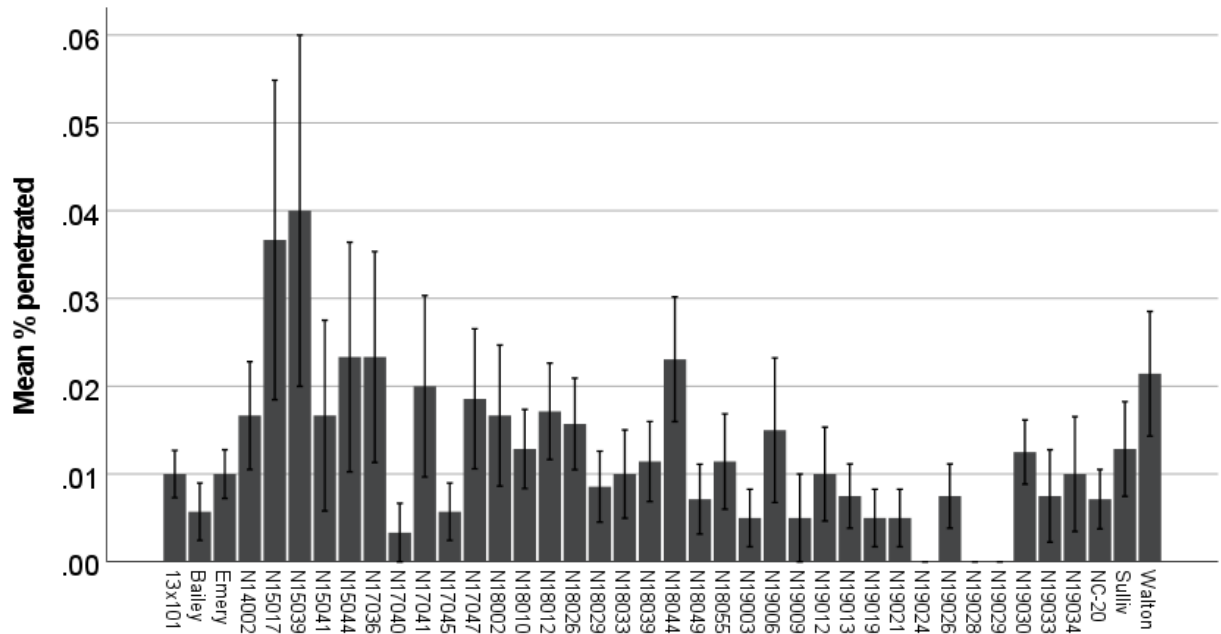


Figure 6. Average percentage of penetrated pods due to SCR feeding across the 42 evaluated varieties and advanced breeding lines that were harvested early. Error bars represent +/- standard errors.

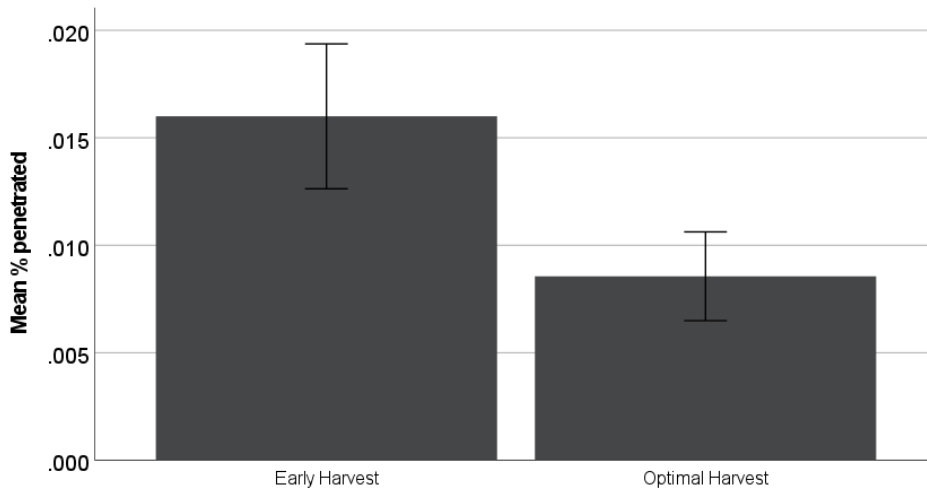


Figure 7. Comparison of penetrated injury between early and optimal dug peanuts. Error bars represent +/- standard errors.