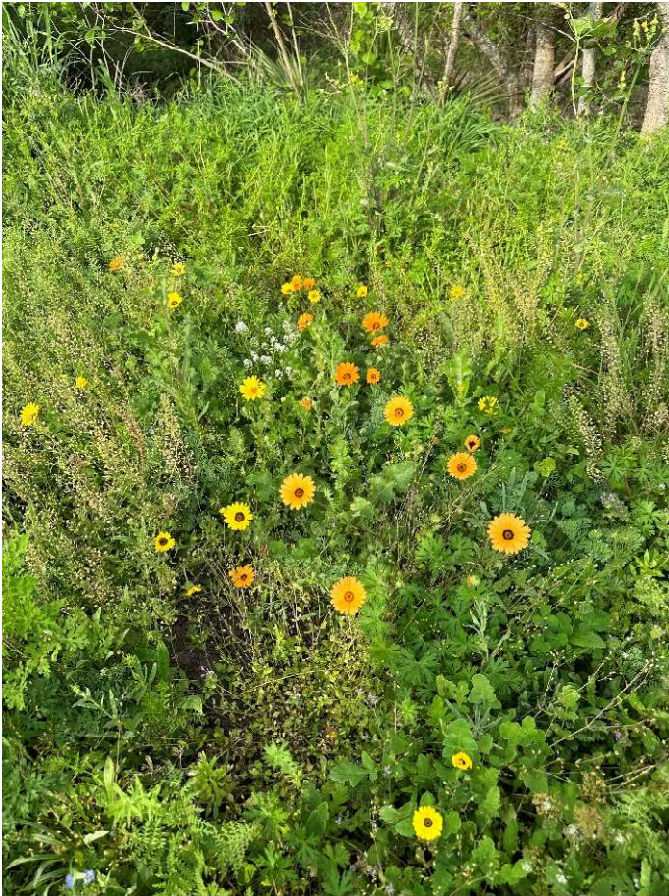


Pollinator crop area is newly established in January of 2023, it is planted next to the WHF community garden.



Pollinator strip that is about 300 feet long by 5 feet wide was est. in Dec 2023 along a south facing edge.





Cover crops are continuously rotated through farm plots that are seasonally planted with cover crops for pollinator forage, agritourism and soil building benefits. They are also routinely moved to make compost.

