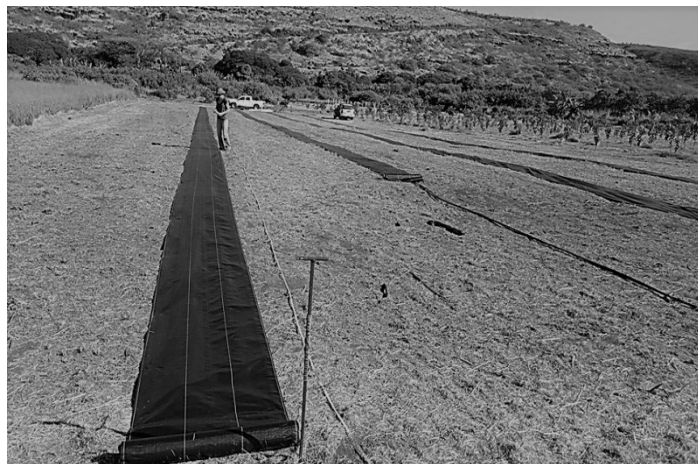


Open Tatura Trellis System

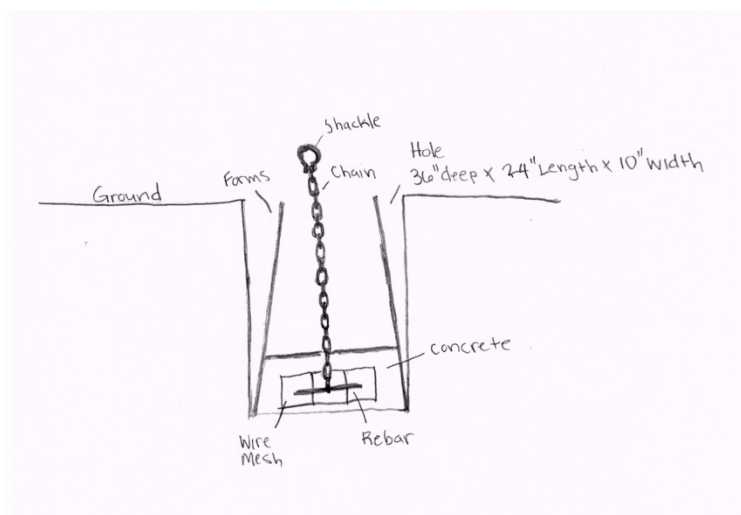
Field Prep and Irrigation

- Clear, level, and mow field to get ready for trellis
- Rows are 250' long and 15' spacing between rows.
- Irrigation includes 2 lines of ½" solid poly tubing with 2 gallon/ hour emitters every 10 feet for each row. Emitters are installed after the trees have been planted.
- 3' black weed mat is laid over the poly tubing and secured with ground staples every 4 feet. Draw string in order to get straight lines.



Ground Anchor

- Hole is 36" deep X 24" long X 10" wide
- 18" wire mesh basket with 12" Rebar attached to chain to reinforce concrete.
 - Forms were used to make the concrete block smaller and a trapezoid shape.
 - Two 80 pound bags of concrete per hole.
 - 4' chain with shackle extending out of the ground. Will be used to attach trellis wire.

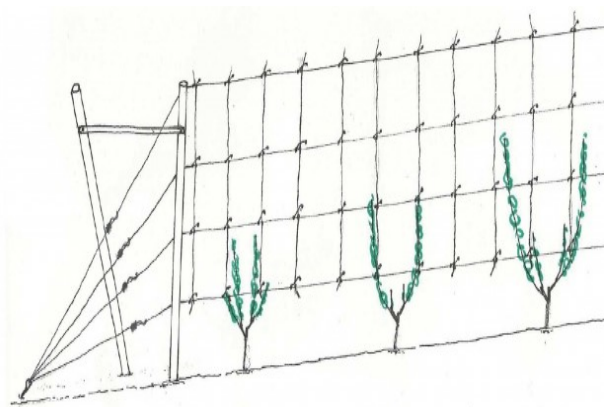


Open Tatura Trellis Frames

- Wood posts are 5" X 10' treated pine.
- Posts holes are 24" deeps and posts are set at a **72° angle**
- A template made out of 1" pipe to follow as a guide is very helpful.
- Posts are spaced 20" apart creating the "open" part of the trellis
- Frames are set 45 feet apart



Open Tatura Trellis System

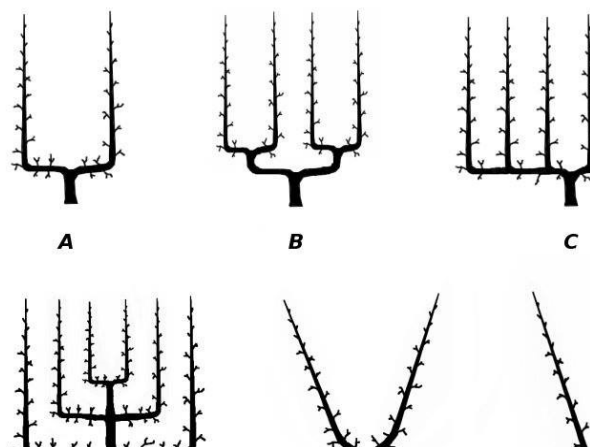


High Tensile smooth wire

- 12.5 gauge galvanized high tensile wire has twice the strength of soft wire and resists sagging.
- 1 3/4" barbed staples to hold wires. Set at an angle avoiding cracks in the wood.
- Bottom wire is placed 24" from the ground and 18" apart for the rest of the wires. Make your marks from the ground up.
- Each line has a strainer to tension the wires.
- Twine is used to train trees up.

Planting and Training

- Double rows are staggered with a 10' spacing.
- There are many different techniques for training trees.
- Mango can be trained with 1 or two leaders or the fan shape.
- Avocado trees can have as much as 4 leaders.



Tools

- Shovels; spade, flathead, post-hole digger, o'o.
- Gas powered post-hole digger (essential)
- Pliers, hammer, 2 lb hammer, screwdriver.
- Tape measure, level, square, pencil, ladder
- Draw string, spray paint, stakes, 300' tape measure.
- Battery powered drill and screw gun.
- Spinning Jenny, Hi tensile wire cutters, wire winding tool.
- Protective eyewear and leather gloves

